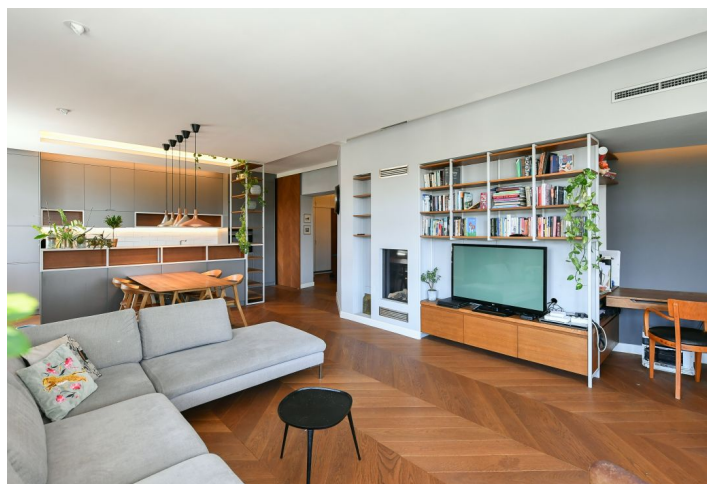




Apartment Three-bedroom (4+kk)

Rented

145.5 m², Prague 6, Dejvice, Eliášova



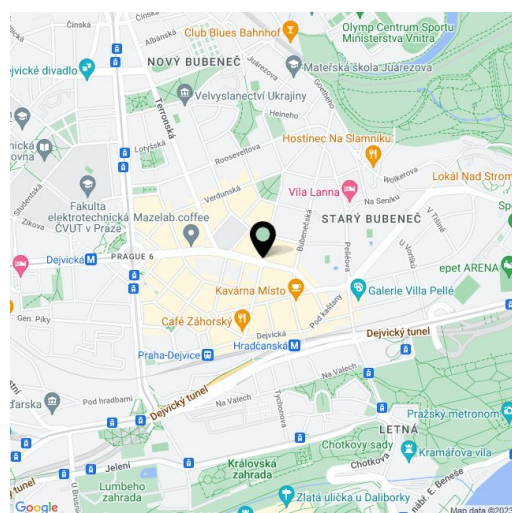


Apartment Three-bedroom (4+kk)

Rented

145.5 m², Prague 6, Dejvice, Eliášova

| | |
|------------------|---|
| Total area | 146 m² |
| Parking | - |
| Cellar | Yes |
| Service price | Monthly deposit for common building charges and water CZK 3,000. Utilities are billed separately. |
| PENB | G |
| Reference number | 102369 |
| Available from | Immediately |



This nicely refurbished, fully furnished apartment with 2 bathrooms is on the fourth floor of a well-maintained renovated corner building from the early 20th century with an elevator. Located in a lively Prague 6 neighborhood with excellent connections to international schools in Prague 5 and 6 as well as the airport. Full amenities and services are available in the area, with the Hradčanská and Dejvická metro stations just minutes away, and within walking distance of the Prague Castle and the Stromovka and Letná parks.

The interior features a bright corner living room with a **fireplace**, a fully fitted open plan kitchen and a study area, a master bedroom with a large built-in wardrobe and an en-suite bathroom (bathtub, walk-in shower, toilet), a second bedroom, a bedroom/study, a family bathroom (walk-in shower, toilet), a utility room, and a spacious entrance hall with built-in wardrobes.

Air-conditioning, hardwood parquet floors, carpets in the bedrooms, tiles, security entry door, gas boiler, underfloor heating in the bathrooms, washer, dryer, dishwasher, induction cooktop, **cellar**. A secure **parking** space in front of the building is available at CZK 3,000/month.

* Area of the unit according to the Civil Code. The area consists of the sum total area of the entire unit bounded by perimeter walls.