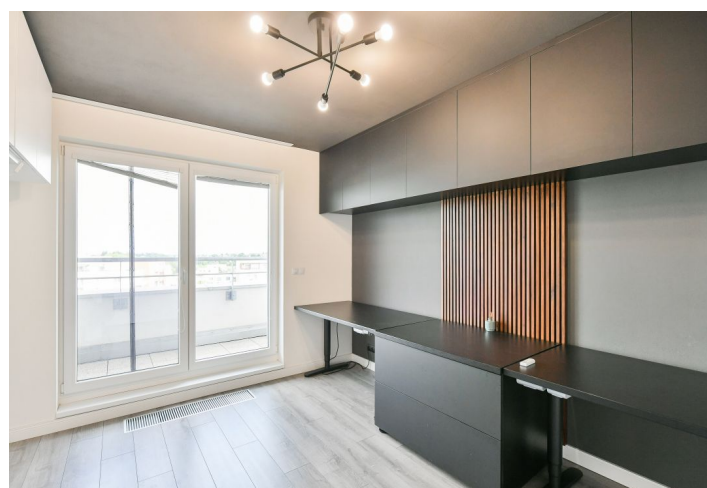
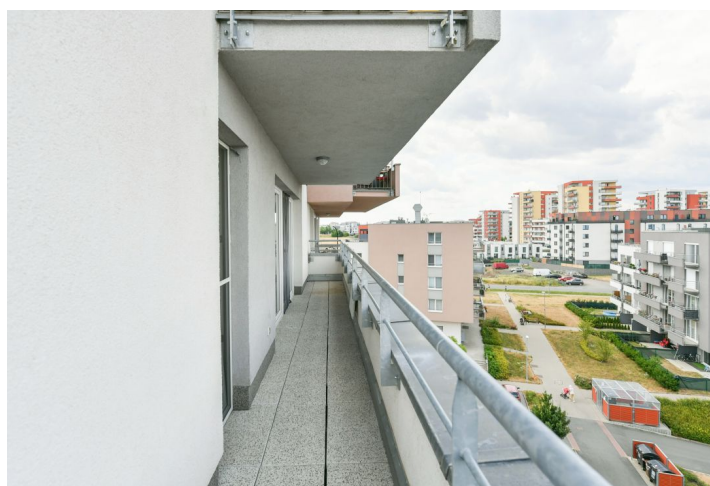




## Apartment Two-bedroom (3+kk)

Rented

81.4 m², Prague 9, Letňany, Štänderova





## Apartment Two-bedroom (3+kk)

**Rented**

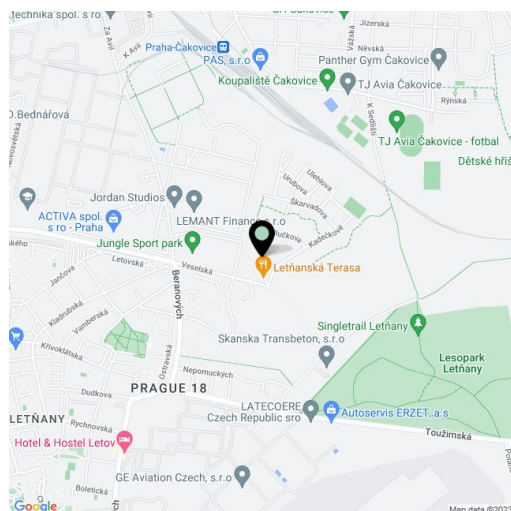
81.4 m², Prague 9, Letňany, Štänderova

Total area	102 m²
Floor area*	81 m²
Terrace	21 m²
Parking	Garage parking.
Cellar	Yes
Service price	Monthly deposit for common building charges, water, and heating CZK 6,000. Electricity is paid separately.
PENB	B
Reference number	102266
Available from	Immediately

Boasting a spacious terrace, this semi-furnished apartment is on the 5th floor of a modern residential building with an elevator, near a landscaped forest park. Located within easy reach of the Letňany metro station (line C, only a few short bus stops away) and complete amenities, incl. the OC Letňany shopping and entertainment center, a kindergarten, a primary school, a post office, a water park, a winter stadium, and a bike trail.

The apartment features a living room with a fully fitted open plan kitchen, a master bedroom, a bedroom/study with built-in wardrobes and an automatic adjustable desk system (**ideal for a home office**), a fitted **walk-in closet**, a bathroom with a bathtub, a separate toilet, and an entrance hall. The **terrace** is accessible from all main rooms.

Laminate floors, tiles, security entry door, central heating, underfloor heating in the bathroom, dishwasher, induction cooktop, microwave oven, alarm, **cellar**. A secure **parking** space in the underground garage in the building is available at an additional fee.



\* Area of the unit according to the Civil Code. The area consists of the sum total area of the entire unit bounded by perimeter walls.