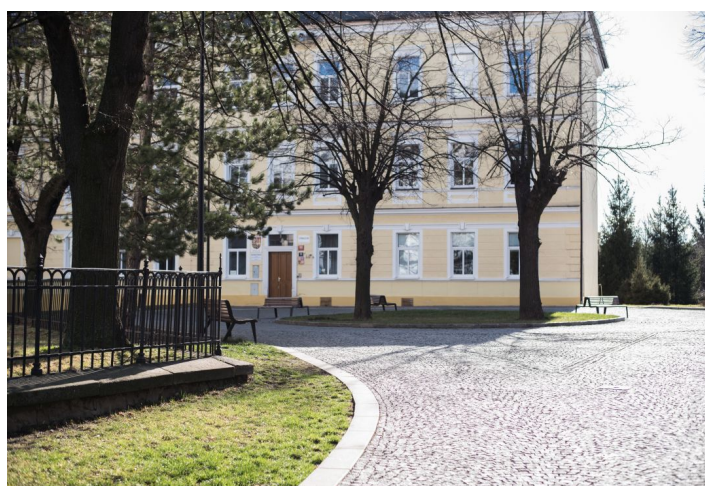
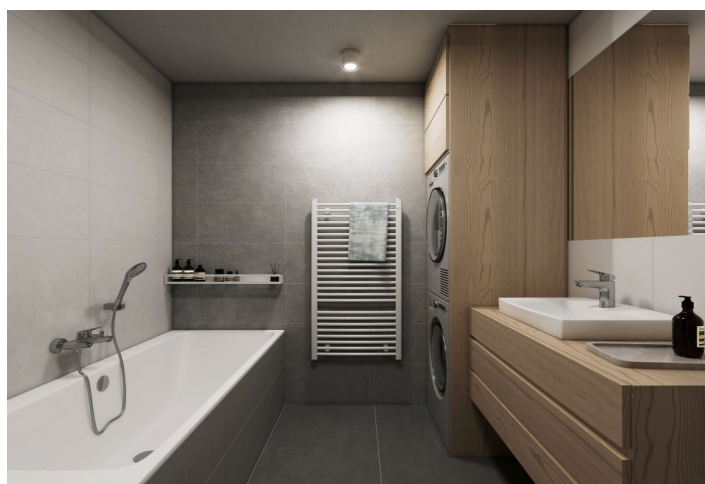




## Apartment Studio (1+kk)

38.85 m², Prague 9, Čakovice, Kurta Hubera

**Sold**





## Apartment Studio (1+kk)

**Sold**

38.85 m², Prague 9, Čakovice, Kurta Hubera

Total area	44 m²
Floor area*	39 m²
Loggia	6 m²
Parking	Covered parking space incl. in the price
Cellar	2 m²
PENB	B
Reference number	102173

This new build 2nd floor apartment with a loggia is located in a cozy residential project designed by the renowned ADR architectural studio, on the border of Čakovice, Letňany, and Ďáblice, within reach of complete services and nature. The new apartment building with 15 units is the next stage of the successful Na Pramenech project, consisting of family houses set in greenery. Expected completion date is in first half of 2024.

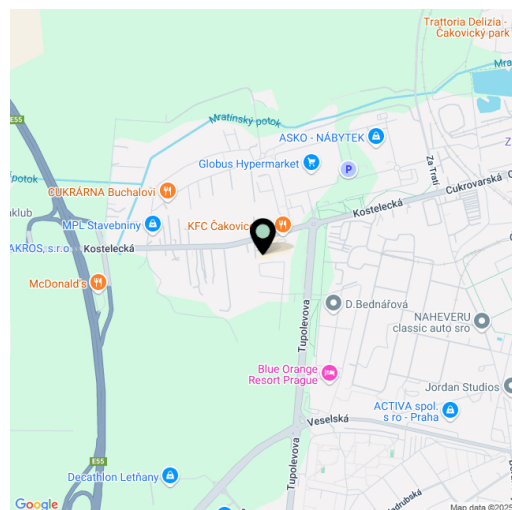
The layout consists of a living room with a preparation for a kitchen and a sleeping corner, a bathroom, and a foyer. From the living, room it is possible to enter the **loggia**.

The high-quality standard includes **three-layer wooden floors, Laufen Pro, Roth, and Kaldewei** sanitary ware, **Hansgrohe** faucets, large-format ceramic tiles by the traditional **Rako** Czech brand, security entrance doors, DOORNITE interior panel doors, plastic windows in anthracite (exterior) and white (interior) with interior window sills made of lacquered MDF board and with a preparation for exterior blinds. The apartment includes a cellar and a covered parking space on the adjacent plot. The building is equipped with an **elevator**.

In the immediate vicinity are 2 shopping centers and small shops, as well as **plenty of opportunities for sports activities**. A metro station is a 5-minute bus ride away, with a stop nearby. There are direct train connections from the nearby railway station to the **city center to the Masaryk Railway Station**. Kindergartens and elementary schools or a high school, an outdoor and indoor swimming pool, a bike path, a skate park, or a multifunctional sports center are within easy reach. The location is very nice thanks to the nearby green areas of the **Ďáblický Grove and the Letňany forest park**.

Floor area 38,85 m² (including cellar 2.2 m²), loggia 5.6 m².

For more information, please visit the project website  
[www.bytnapramenech.cz](http://www.bytnapramenech.cz).



\* Area of the unit according to the Civil Code. The area consists of the sum total area of the entire unit bounded by perimeter walls.





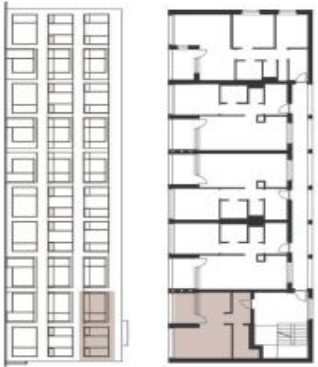
# Apartment Studio (1+kk)

38.85 m², Prague 9, Čakovice, Kurta Hubera

Sold

NA PRAMENECH

bytový dům Praha 9



\*Schéma podlažního bytu představuje dispoziční řešení bytu. Kuchyňská linka a nábytek nejsou součástí dodávky bytu, zařízení je zobrazeno pouze pro názornost. Specifikace pro konstrukci, povrchové úpravy a rozsah vybavení je předmětem přílohy "Standardy". Developer si vyhrazuje právo na změny a upřesnění bez předchozího upozornění. Podlahová plocha bytu je včetně plochy přístřeší a vnitřních nosných stěn dle vládního nařízení 366/2013 Sb.



Byt 11 | 1+kk | 3. NP



č.	místnost	m²
1	předstíh	5,50
2	koupelna	5,50
3	obývací pokoj s kuchyní	24,50
užitná plocha		35,50
sklep		2,20
podlahová plocha*		38,85
4	lodžie	5,60
kryté parkovací stání		

www.bytynapramenech.cz

Developer  
bpd development

svoboda&williams  
CHRISTIE'S  
INTERNATIONAL REAL ESTATE

+420 257 328 281, +420 724 551 238  
info@bytynapramenech.cz