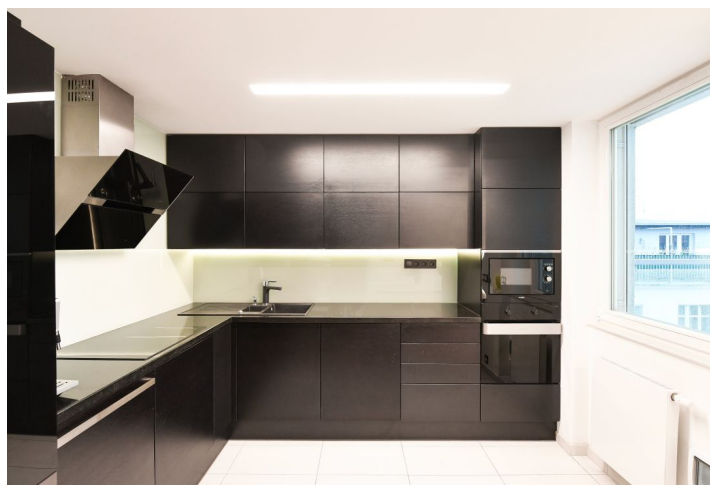
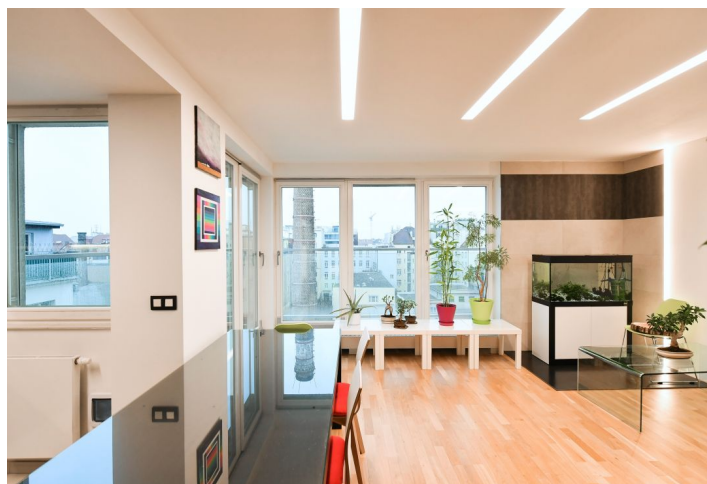
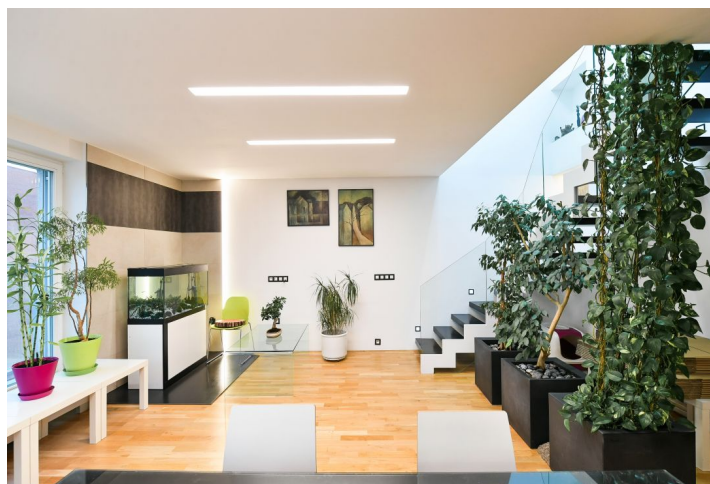
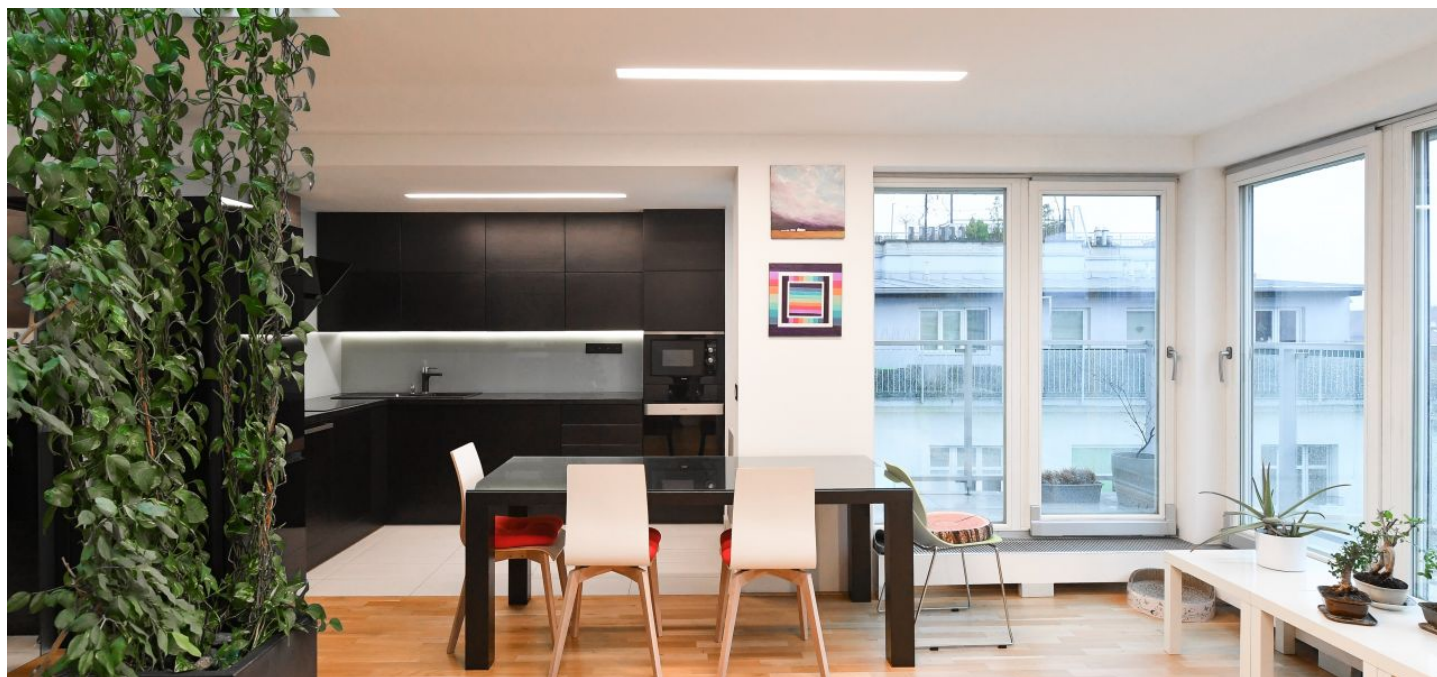




Apartment Two-bedroom (3+kk)

Rented

80 m², Prague 7, Holešovice, Na Maninách





Apartment Two-bedroom (3+kk)

Rented

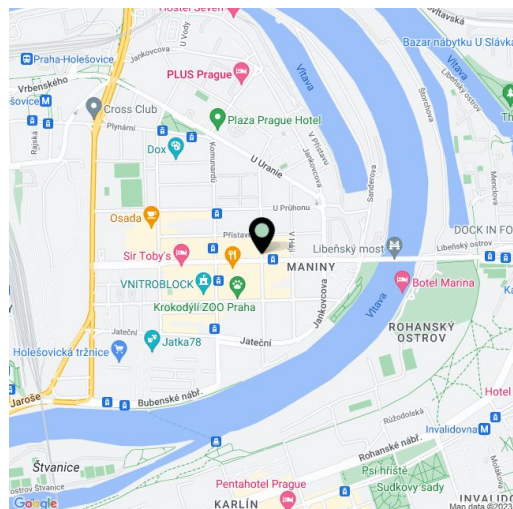
80 m², Prague 7, Holešovice, Na Maninách

Total area	83 m²
Floor area*	80 m²
Balcony	3 m²
Parking	A garage is available 15 minutes from the building.
Garage	Yes
Cellar	-
Service price	Monthly deposit for service charges and water CZK 900 per person. Gas and electricity will be transferred to the tenant.
PENB	D
Reference number	101497
Available from	Immediately

Benefiting from a balcony, this unfurnished split-level apartment on the 6th floor of a renovated residential building with an elevator and a shared landscaped courtyard is set in the central part of Holešovice, Prague 7, in an area with full amenities within easy reach and tram connections to the Vltavská, Nádraží Holešovice (line C), and Palmovka (line B) metro stations. Excellent access to the city center, near the Holešovice Squash Center, the Rohanský Ostrov driving range, the DOX Centre for Contemporary Art, the Prague Market, and many theaters and music clubs incl. SaSaZu, La Fabrika, Rock Opera, and Játka 78.

The lower level includes a living room with a fully fitted open plan kitchen and **balcony** facing the courtyard, a **walk-in closet** with a utility area, a toilet, and an entrance hall. The upper floor offers a master bedroom with a large built-in wardrobe, a study/second bedroom with a built-in wardrobe and storage, and a bathroom with a bathtub and a toilet.

Hardwood oak floors, heated tiles, ample storage space, automatic exterior blinds, triple-glazed windows, gas boiler, dishwasher, microwave oven. A **garage** is available 15 minutes from the building.



* Area of the unit according to the Civil Code. The area consists of the sum total area of the entire unit bounded by perimeter walls.