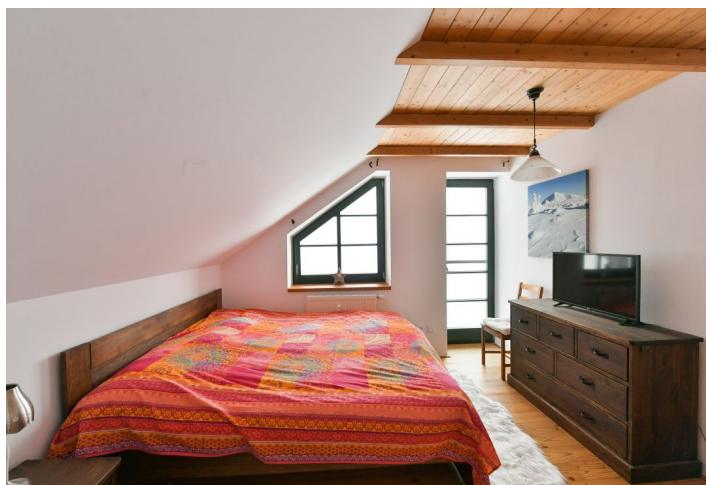
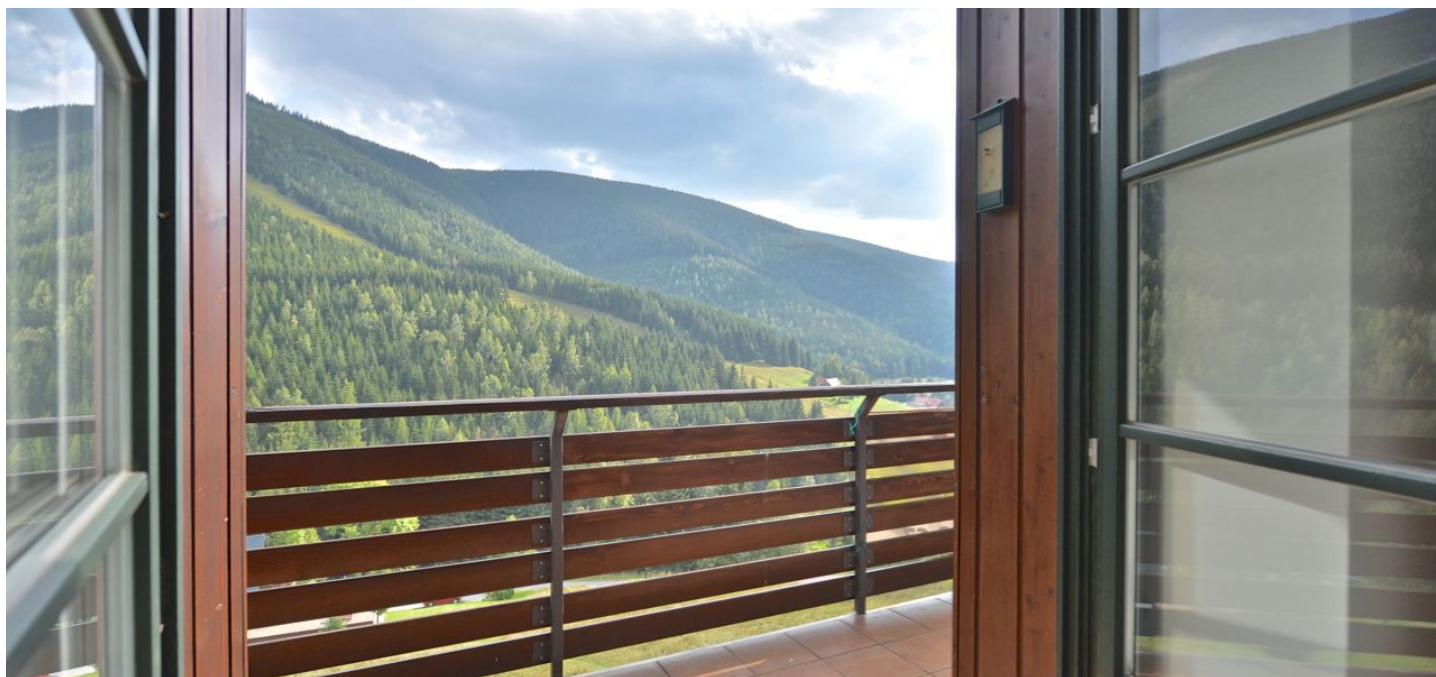




## Apartment Two-bedroom (3+kk)

**Sold**

100 m<sup>2</sup>, Trutnov, Špindlerův Mlýn





## Apartment Two-bedroom (3+kk)

**Sold**100 m<sup>2</sup>, Trutnov, Špindlerův Mlýn

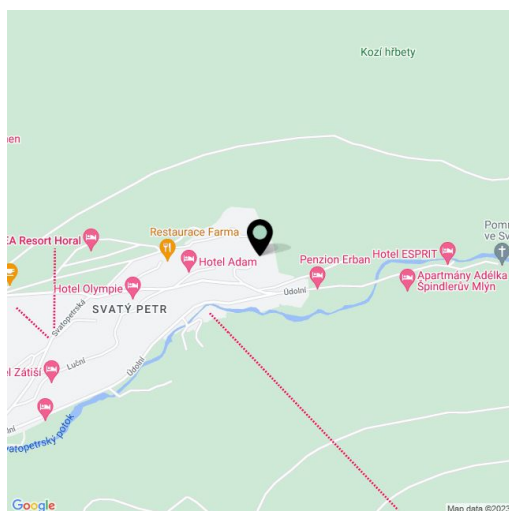
Total area	110 m <sup>2</sup>
Floor area*	100 m <sup>2</sup>
Terrace	10 m <sup>2</sup>
Parking	2 underground garage parking spaces
Garage	Yes
Cellar	Yes
PENB	G
Reference number	101338

**Boasting a terrace, sauna, and stunning views of the Svatopetrské Valley, this south-facing, two-bedroom split-level attic apartment is situated on the 2nd and 3rd floors of the INKA apartment house, only a few minutes' drive from the center of Špindlerův Mlýn. A beautiful natural area in one of the most popular Czech ski resorts.**

The apartment consists of a living room with a **tiled stove**, terrace, kitchen, and dining area, two bedrooms, a bathroom with a whirlpool bathtub, shower, two sinks, toilet, and bidet, a separate toilet, and a hallway. The premium equipment includes **hardwood floors**, a new kitchen unit, wooden windows, a **Salus sauna**, and exposed ceiling beams. The purchase price includes **2 parking spaces in the underground garage** and a **brick cellar**. There is also a common ski storage space with a boot dryer and repair room. Onsite caretaker lives in the building year-round.

The location of Špindlerův Mlýn is famous for its various slopes for skiers of all levels, high-quality cross country trails, and other sports and cultural opportunities, including summer tourism (hiking, biking, extreme sports). The town boasts a number of shops, services, restaurants, cafes, and clubs. Excellent transport links to and from Prague.

Floor area 98.46 m<sup>2</sup>, cellar 1.32 m<sup>2</sup>, terrace 10.1 m<sup>2</sup>.



\* Size of the unit according to the Housing Act.  
The area consists of the sum total of the internal area of every room.