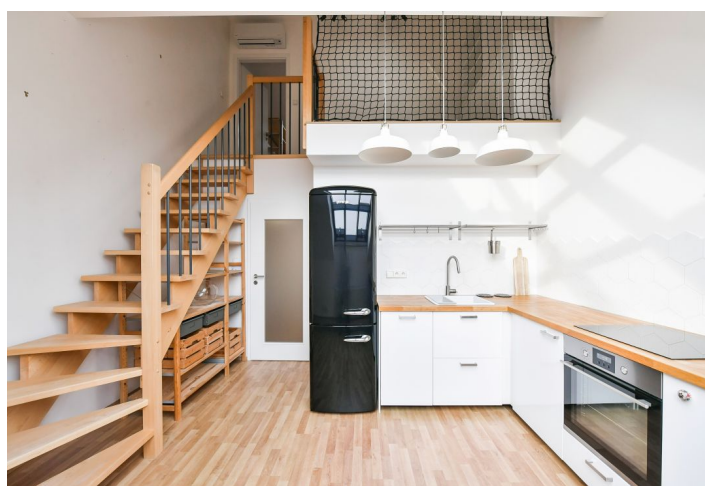
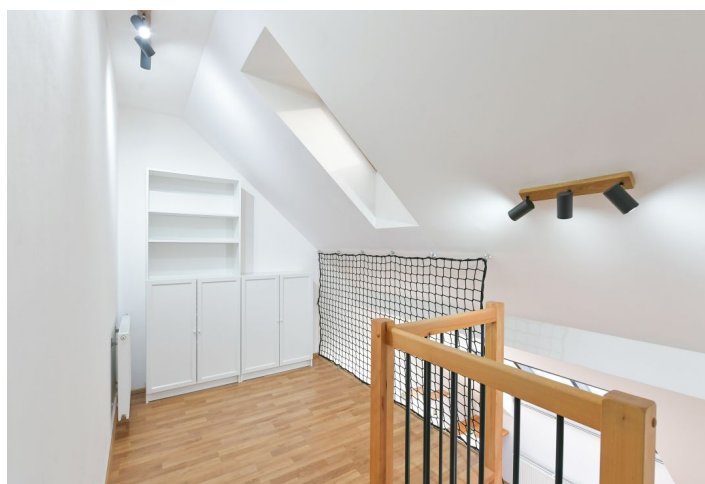




Apartment One-bedroom (2+kk)

Rented

46.2 m², Prague 10, Vršovice, 28. pluku





Apartment One-bedroom (2+kk)

Rented

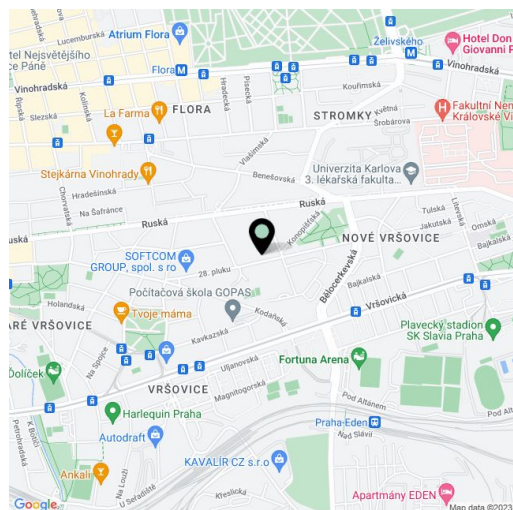
46.2 m², Prague 10, Vršovice, 28. pluku

Total area	46 m²
Parking	-
Cellar	-
Service price	Monthly deposit for service charges and water: CZK 2,000. Gas and electricity are billed separately.
PENB	G
Reference number	100937
Available from	Immediately

This bright unfurnished 1-bedroom split-level apartment with views of green Bohdalec Hill is on the topmost 5th floor of a well-maintained renovated Art Nouveau building with an elevator, on a tree-lined street in one of the most popular locations in Prague 10. Set in close vicinity of the park on Svatopluka Čecha Square, near the Eden shopping and cultural center. The surrounding area offers everything you need for comfortable city life incl. shops, cafes, bistros, and restaurants. Nearby Krymská Street is lined with popular bars and clubs. Buses and trams provide quick connections to the city center, and the Náměstí Míru metro station is just a few min. ride away.

The airy interior features, on the lower level, a fully fitted kitchen with a living area, a shower room with a toilet, and an entrance hall with a built-in wardrobe. The upper floor offers an open **gallery** suitable for a study, and a bedroom.

Air-conditioning, floating floors, tiles, gas boiler, washer/dryer, dishwasher.



* Area of the unit according to the Civil Code. The area consists of the sum total area of the entire unit bounded by perimeter walls.