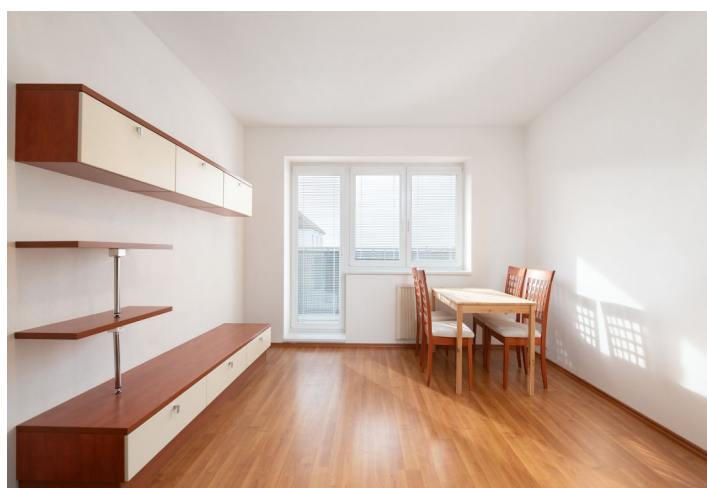
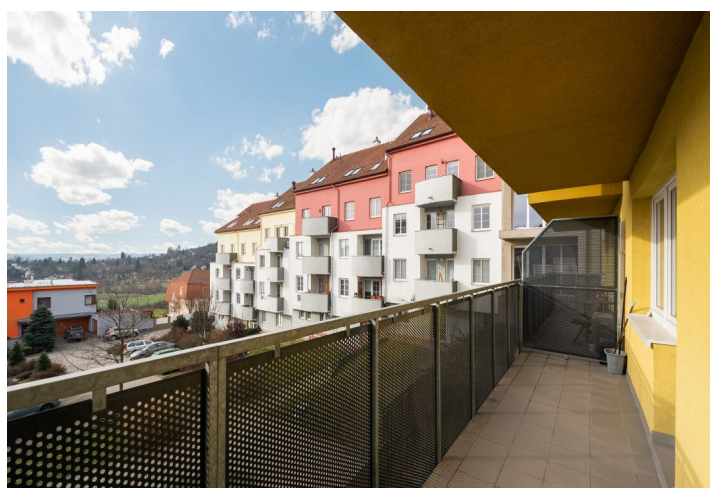




Apartment Two-bedroom (3+kk)

€ 945 | CZK 23 000

70.53 m², Brno-město, Řečkovice, Nachová





Apartment Two-bedroom (3+kk)

€ 945 | CZK 23 000

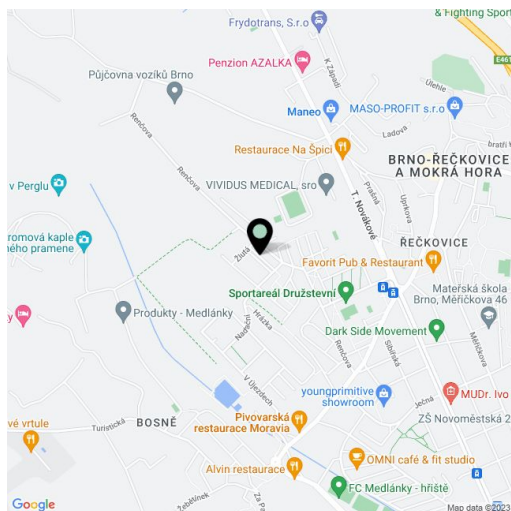
70.53 m², Brno-město, Řečkovice, Nachová

Total area	80 m²
Floor area*	71 m²
Balcony	9 m²
Parking	Yes
Cellar	-
Service price	Monthly deposit for common building charges and utilities CZK 6,000.
PENB	G
Reference number	100906
Available from	Immediately

This is a bright semi furnished 2-bedroom apartment with a balcony and green views, on the first floor in a residential building with a lift and parking. Located in a slope in the popular Medlánky residential neighborhood, within walking distance of a bus stop. Local amenities include playgrounds, a primary school, a kindergarten, a grammar school, a shopping center and the Sportareál Družstevní fitness center with a swimming pool.

The interior features a living room with a fully fitted open plan kitchen and access to the **balcony**, a bedroom also with balcony access, a second bedroom, a bathroom including a bathtub, a separate toilet, a **walk-in closet**, and a spacious entrance hall.

Plastic windows, interior blinds, floating floors, tiles, storage space, underfloor heating in the bathroom and the hall, electric heating, electric hot water boiler, sofabed, **cellar**. **Parking** is available in front of the building, plus parking in a parking lot.



* Area of the unit according to the Civil Code. The area consists of the sum total area of the entire unit bounded by perimeter walls.