



Apartment Three-bedroom (4+kk)

Rented

140 m², Prague 3, Vinohrady, Laubova





Apartment Three-bedroom (4+kk)

Rented

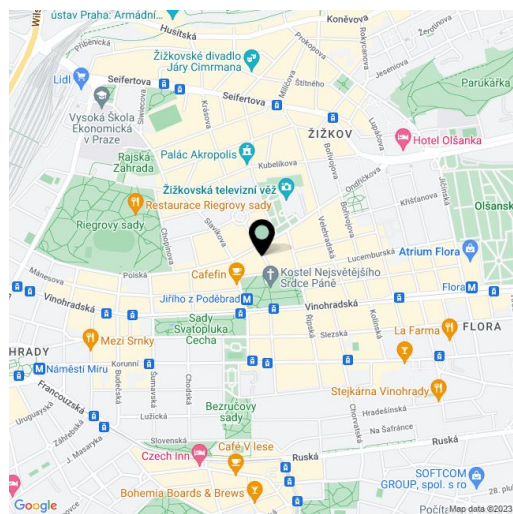
140 m², Prague 3, Vinohrady, Laubova

Total area	142 m²
Floor area*	140 m²
Balcony	2 m²
Parking	One parking space located 350m from the building is included in the rent.
Garage	Yes
Cellar	Yes
Service price	Common building charges EUR 125/person/month. Monthly deposit for hot water and heating CZK 10,000. Electricity will be transferred to the tenant.
PENB	G
Reference number	100890
Available from	Immediately

Boasting views of Jiřího z Poděbrad Square and the unique modern Church of the Most Sacred Heart of Our Lord, this brand new attractive air-conditioned unfurnished apartment is situated on the 4th floor of a completely refurbished Art-Nouveau building with an elevator and preserved original features. Conveniently located in a popular Vinohrady residential area by Jiřího z Poděbrad Square with a metro station and tram links, and full amenities within easy reach.

The interior includes a spacious living room with a fully fitted open plan kitchen and dining area, a master bedroom with a walk-in closet and en-suite bathroom with a bathtub, two bedrooms, a bathroom with a shower, toilet, and bidet, a utility room, and an entry hall.

High standard materials and finishes, large windows, hardwood parquet floors, tiles, security entry door, built-in wardrobes, gas boiler, high quality appliances incl. a washer/dryer, plenty of storage space, cellar. Unfurnished, possible to furnish at a higher rent. One garage parking space (located approx. 350m from the building) is included in the rent.



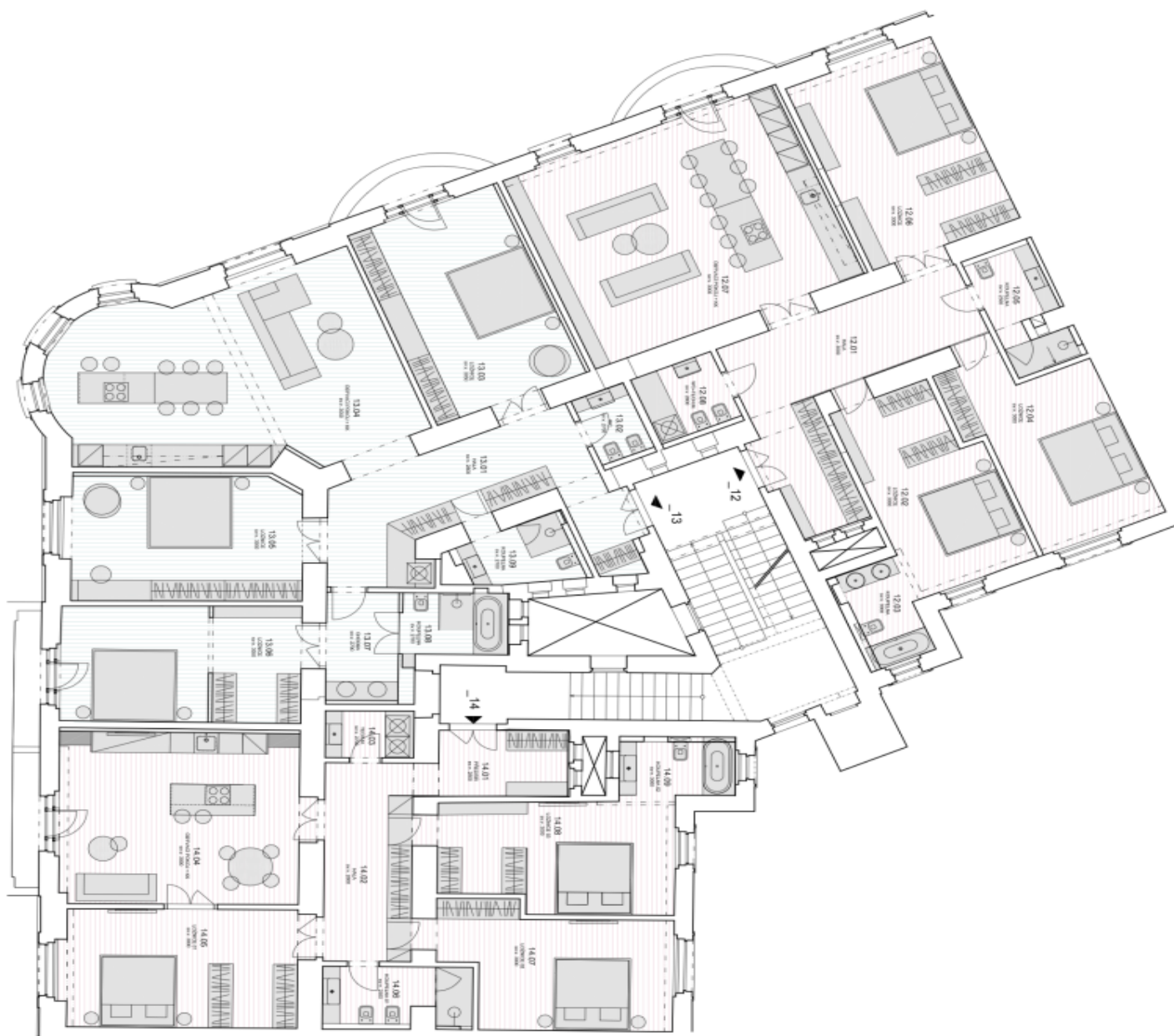
* Area of the unit according to the Civil Code. The area consists of the sum total area of the entire unit bounded by perimeter walls.



Apartment Three-bedroom (4+kk)

Rented

140 m², Prague 3, Vinohrady, Laubova



byť č. 14 - 4kk

Č.M.	RODOKL. NÁZEV	PLOCHA M ²
14.01	LOŽNICE	7.1
14.02	KUCH. M.	14.0
14.03	KUCH. M.	3.5
14.04	LOŽNICE	3.5
14.05	LOŽNICE	2.3
14.06	KUCH. M.	6.5
14.07	LOŽNICE	2.2
14.08	LOŽNICE	2.1
14.09	KUCH. M.	5.5
CELKEM		139.3

byť č. 13 - 4kk

Č.M.	RODOKL. NÁZEV	PLOCHA M ²
13.01	KUCH. M.	24.4
13.02	KUCH. M.	3.2
13.03	LOŽNICE	27.8
13.04	LOŽNICE	8.8
13.05	LOŽNICE	24.2
13.06	KUCH. M.	6.4
13.07	KUCH. M.	5.5
13.08	KUCH. M.	6.2
CELKEM		173.8

byť č. 12 - 4kk

Č.M.	RODOKL. NÁZEV	PLOCHA M ²
12.01	KUCH. M.	24.5
12.02	KUCH. M.	3.7
12.03	LOŽNICE	5.3
12.04	LOŽNICE	21.7
12.05	LOŽNICE	6.3
12.06	KUCH. M.	20.9
12.07	KUCH. M.	8.4
12.08	KUCH. M.	5.1
CELKEM		165.9