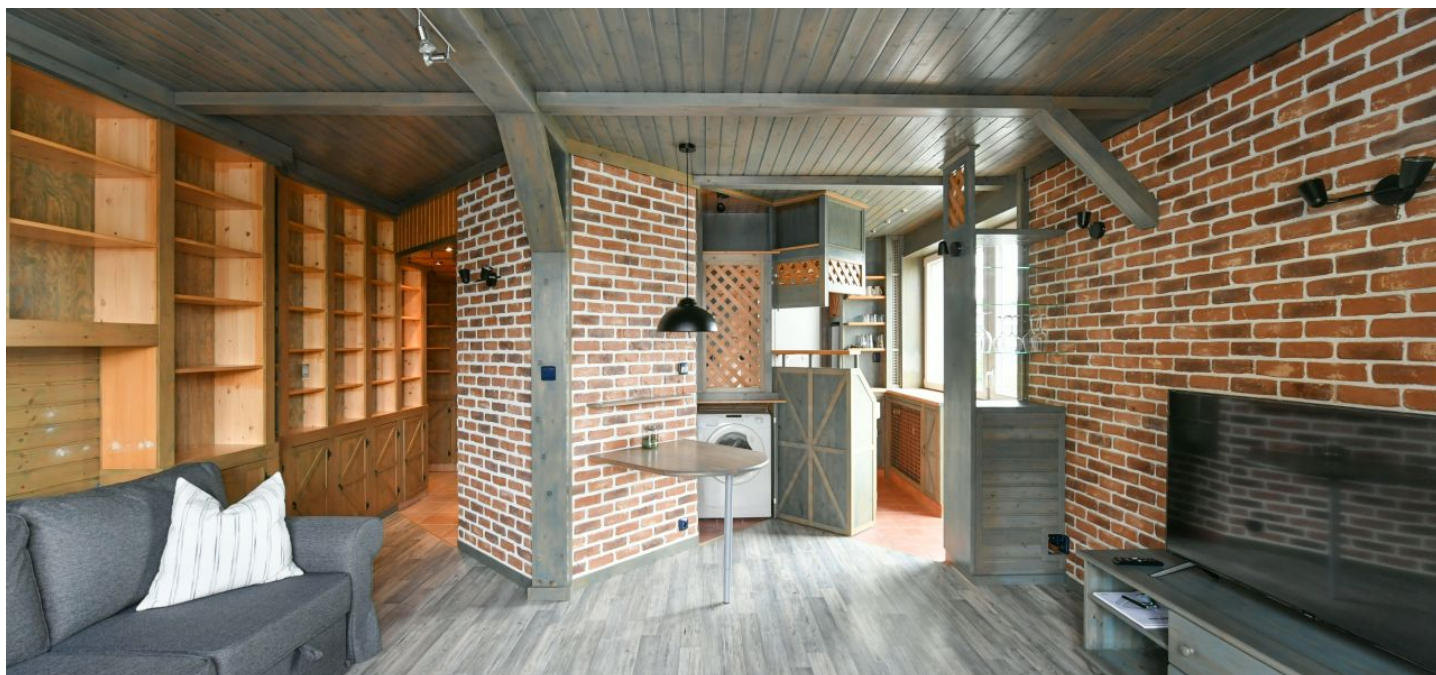




Apartment One-bedroom (2+kk)

Rented

55 m², Prague 7, Holešovice, Osadní





Apartment One-bedroom (2+kk)

Rented

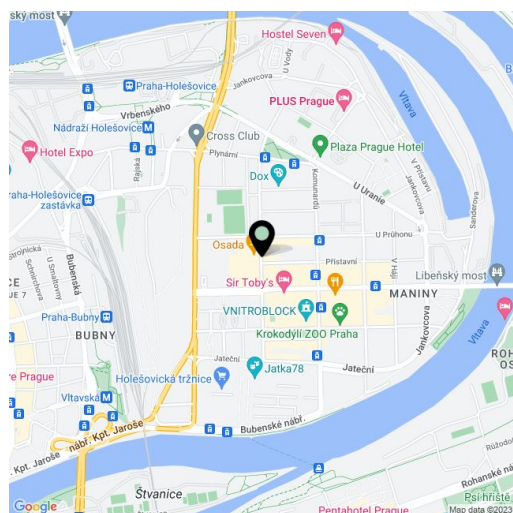
55 m², Prague 7, Holešovice, Osadní

Total area	56 m²
Floor area*	55 m²
Balcony	1 m²
Parking	-
Cellar	-
Service price	Service charges CZK 3,000/month. Electricity - transfer to the tenant.
PENB	G
Reference number	100852
Available from	Immediately

This renovated furnished 1-bedroom flat with 2 small balconies is on the second floor of a refurbished residential building with an elevator, located on a quiet street near a bus and a tram stop, only a few stops from the Nádraží Holešovice, Palmovka, and Vltavská metro stations. Set in a vibrant neighborhood of Holešovice with full amenities within easy reach and quick access to the city center. A neighborhood with many trendy cafes, restaurants, bistros, and cultural venues nearby, incl. the La Fabrika Theater, the DOX Center for Contemporary Art, and the Vnitroblok cultural venue.

The apartment has a corner living room with a dining area, a fully fitted open plan kitchen, and **2 balconies**, a bedroom, a shower room with a toilet, and an entrance hall with built-in wardrobes and storage.

Laminate floors, tiles, security entry door, blinds, insect screens, washing machine, built-in wardrobes, chip entry to the building.



* Area of the unit according to the Civil Code. The area consists of the sum total area of the entire unit bounded by perimeter walls.