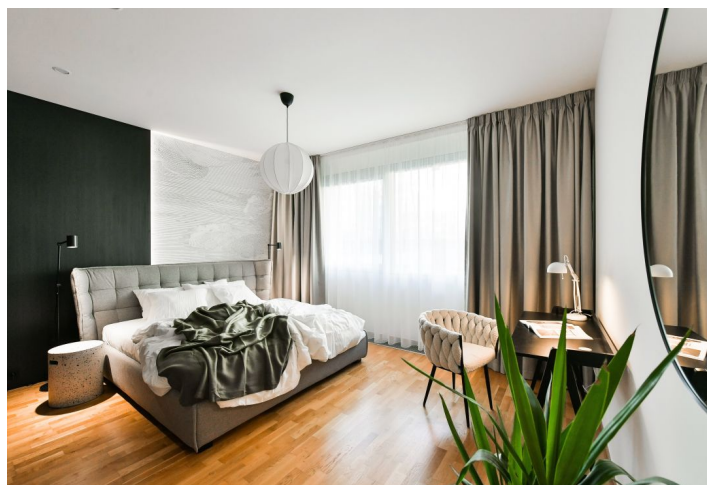




## Apartment One-bedroom (2+kk)

Rented

68.13 m², Prague 10, Vinohrady, Korunní





## Apartment One-bedroom (2+kk)

**Rented**

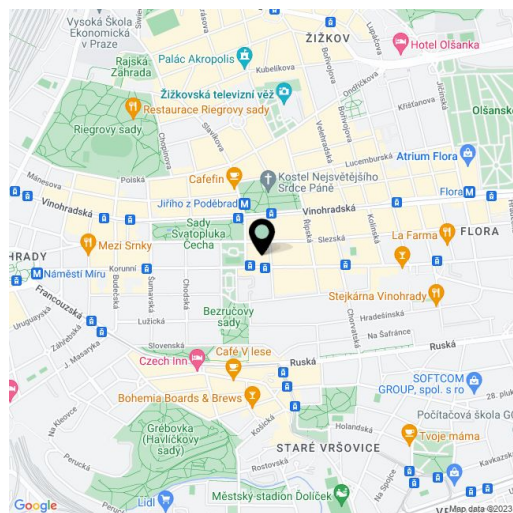
68.13 m², Prague 10, Vinohrady, Korunní

|                  |   |
|------------------|---|
| Total area       | 77 m²   |
| Floor area*      | 68 m²   |
| Terrace          | 9 m²  |
| Parking          | Underground garage parking available.   |
| Garage           | Yes   |
| Cellar           | Yes   |
| Service price    | Monthly deposit for services and garage maintenance: CZK 7,000. Electricity is billed separately. |
| PENB             | B   |
| Reference number | 100809  |
| Available from   | 01.06.2026  |

Benefiting from a terrace and a shared front garden, this fully furnished designer apartment for rent is on the ground floor of the modern and secure Korunní dvůr residential complex with a large courtyard with park landscaping. This attractive area offers a wide range of amenities and perfect accessibility. There is a tram stop moments from the building with quick access to the city center (about 10 minutes). The Flora metro station (line A) and Flora shopping and entertainment center are within walking distance. The complex is adjacent to a residential area from the 1930s with many architectural gems.

The apartment consists of a **south-facing living room** with access to a partially covered **terrace** in a **sunny front garden**, a fully fitted open plan kitchen, a bedroom with north-facing windows, a bathroom with a bathtub and a toilet, and an entrance hall.

**Hardwood floors**, tiles, **aluminum windows** with blinds, built-in wardrobes, central heating, washing machine, dishwasher, microwave oven, video entry phone, garden furniture, **cellar**. A **garage parking space** is included in the rent.



\* Area of the unit according to the Civil Code. The area consists of the sum total area of the entire unit bounded by perimeter walls.