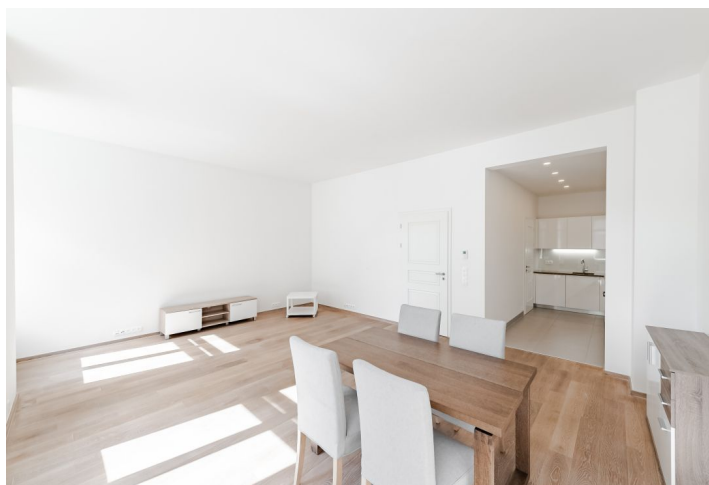




## Apartment Two-bedroom (3+kk)

Rented

104 m<sup>2</sup>, Prague 1, Nové Město, Jungmannova





# Apartment Two-bedroom (3+kk)

Rented

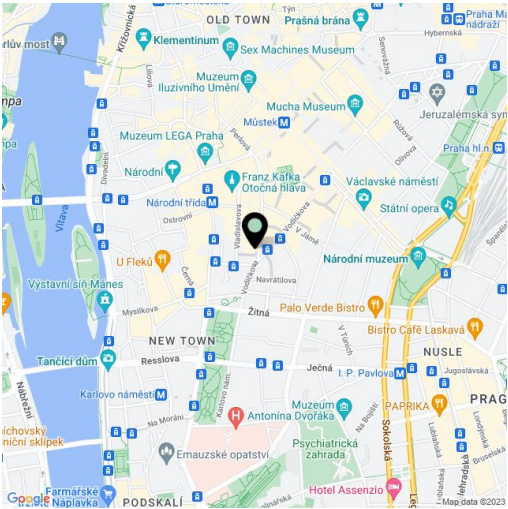
104 m², Prague 1, Nové Město, Jungmannova

Total area	104 m²
Parking	-
Cellar	-
Service price	Deposit for common building charges, water, and heating CZK 6,800/month. Electricity will be transferred to the tenant's name.
PENB	G
Reference number	100536
Available from	Immediately

Benefiting from a prime central location, this partly furnished apartment is situated on the third floor of a historic building which was completely rebuilt and modernized incl. a meticulously preserved original 1920s Art Deco facade and an interior passage connecting Jungmannova Street with Purkyňova and Vladislavova streets. The front facade in the style of German Expressionism was designed by architects Viktor Lampl and Otto Fuchs. This unique multifunctional building is located in the financial and commercial center of Prague moments from the new Quadrio shopping mall, with excellent access by public transport, a short walk from the Národní třída metro station (line B) and tram line hub as well as the Můstek metro station (lines A, B). Wide range of amenities and services available in close vicinity, quiet despite the central location.

The interior features a living room with a dining area and a fully fitted open plan kitchen, two separate bedrooms, a full bathroom, a shower bathroom with a toilet, and a spacious entrance hall.

Premium materials and finishes, **oak floors**, tiles, heated bathroom floors, thermally insulated **double-glazed windows**, central gas heating, **granite kitchen worktop**, dishwasher, induction cooktop, microwave oven, video entry phone, chip entry to the building.



\* Area of the unit according to the Civil Code. The area consists of the sum total area of the entire unit bounded by perimeter walls.



# Apartment Two-bedroom (3+kk)

Rented

104 m<sup>2</sup>, Prague 1, Nové Město, Jungmannova



TABULKA MÍSTNOSTÍ - 4.NP			
č.m.	NÁZEV MÍSTNOSTI	m <sup>2</sup>	m <sup>2</sup>
4.01	SPALOVNĚ	23,85	
4.01.a	SPALOVNĚ	8,65	
4.01.b	OKOUBA	15,20	
4.02	SPALOVNĚ	23,11	
4.02.a	SPALOVNĚ	9,74	
4.02.b	OKOUBA	13,37	
4.03	BYT	82,49	
4.03.a	OKOUBA	5,62	
4.03.b	KOUPELNA	5,38	
4.03.c	LOŽNICE	8,83	
4.03.d	KUCHYNĚ	7,15	
4.03.e	OPRAVY POKL	35,57	
4.03.f	LOŽNICE	12,09	
4.03.g	KOUPELNA	7,06	
4.04	BYT	104,20	
4.04.a	OKOUBA	12,86	
4.04.b	KOUPELNA	3,91	
4.04.c	KUCHYNĚ	8,53	
4.04.d	OPRAVY POKL	35,40	
4.04.e	LOŽNICE	15,61	
4.04.f	OKOUBA	3,87	
4.04.g	KOUPELNA	8,03	
4.04.h	LOŽNICE	18,01	
4.05	BYT	76,54	
4.05.a	OKOUBA	11,47	
4.05.b	KUCHYNĚ	2,83	
4.05.c	KOUPELNA	4,41	
4.05.d	KUCHYNĚ	6,88	
4.05.e	OPRAVY POKL	30,46	
4.05.f	LOŽNICE	12,54	
4.05.g	KOUPELNA	7,96	
4.06	BYT	101,44	
4.06.a	OKOUBA	8,23	
4.06.b	KOUPELNA	5,23	
4.06.c	LOŽNICE	18,63	
4.06.d	KOUPELNA	7,44	
4.06.e	LOŽNICE	18,83	
4.06.f	OPRAVY POKL, KUCHYNĚ	42,77	
CELKOVÝ (bez výhledových šachet)		411,63	
V1	VÝHLEDOVÁ ŠACHTA	2,63	
V2	VÝHLEDOVÁ ŠACHTA	2,93	
TOTAL FLATS		364,67	