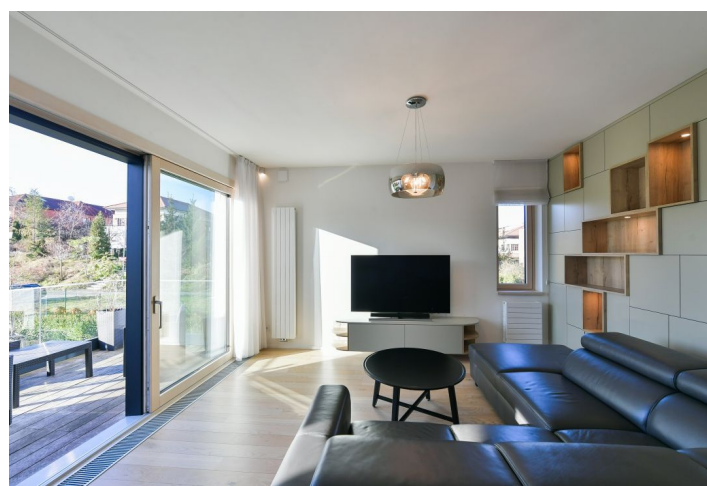
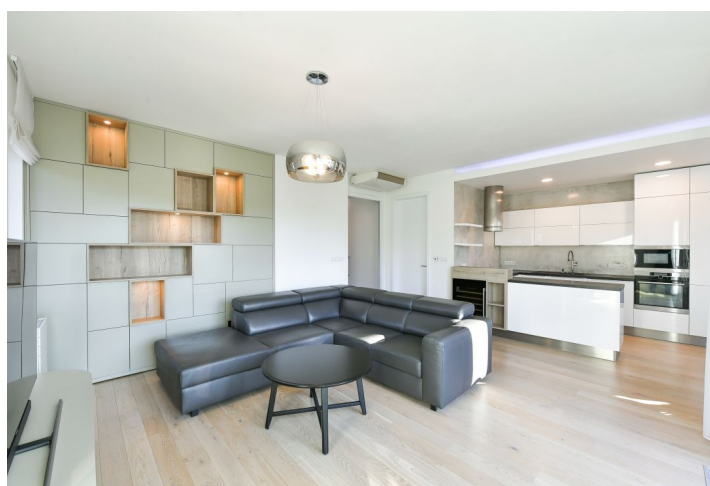
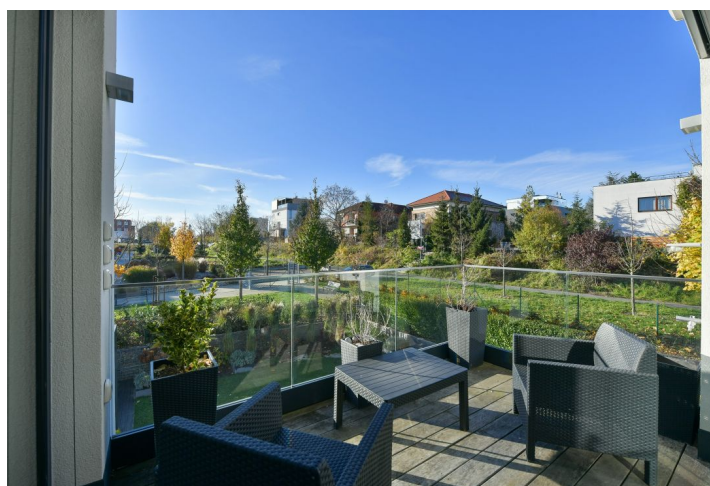




Apartment Two-bedroom (3+kk)

Rented

97.3 m², Prague 6, Břevnov, Radičova





Apartment Two-bedroom (3+kk)

Rented

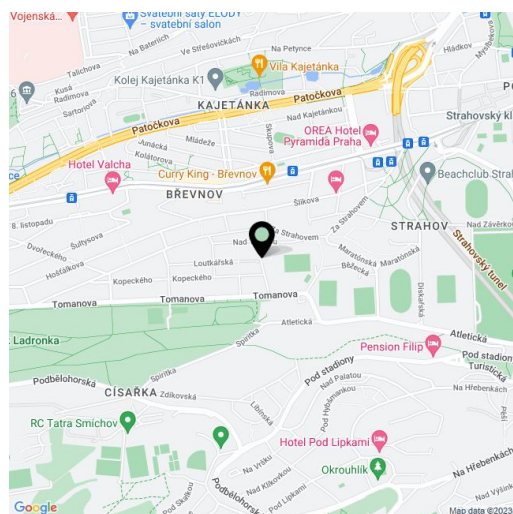
97.3 m², Prague 6, Břevnov, Radičova

Total area	107 m²
Floor area*	97 m²
Terrace	9 m²
Parking	Two garage parking spaces.
Garage	Yes
Cellar	Yes
Service price	Monthly deposit for services, water, heating, incl. Internet and deposit for electricity CZK 10,500.
PENB	B
Reference number	100341
Available from	Immediately

Benefiting from a wonderful location and a south-facing terrace, this high-standard semi-furnished apartment is situated on the 1st floor of the modern gated La Crone residential project with a 24/7 reception, security, and underground parking, in a prestigious residential area in Prague 6. An attractive quiet location in close vicinity of the Strahov Stadium, Prague Castle, and popular Ladronka Park with many sports and relaxation opportunities and quick connections to the city center (tram, bus - about ten min. to the Hradčanská and Anděl metro stations). Conveniently located for the airport and international schools in Prague 6, with a bus stop right next to the residence.

The interior features a living room with a fully fitted open plan kitchen and access to the **terrace**, 2 bedrooms (one with a built-in wardrobe), a bathroom with a bathtub and walk-in shower, a toilet with a bidet shower, a utility/storage room, and an entrance hall with a built-in wardrobe.

High-standard materials, air-conditioning, smart home system, hardwood floors, tiles, security entry door, automatic external blinds, awning, washing machine, dishwasher, induction cooktop, steam oven, microwave oven, wine fridge, video entry phone, 15.5 m² cellar, private fitness room for residents, guest parking. Two garage parking spaces are included.



* Area of the unit according to the Civil Code. The area consists of the sum total area of the entire unit bounded by perimeter walls.