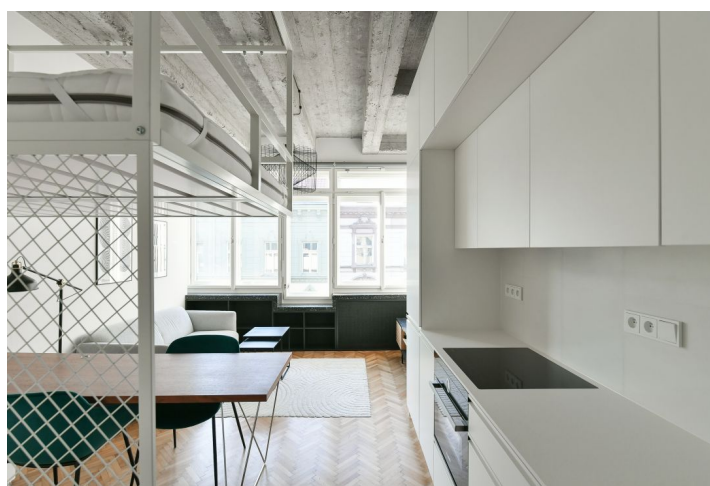
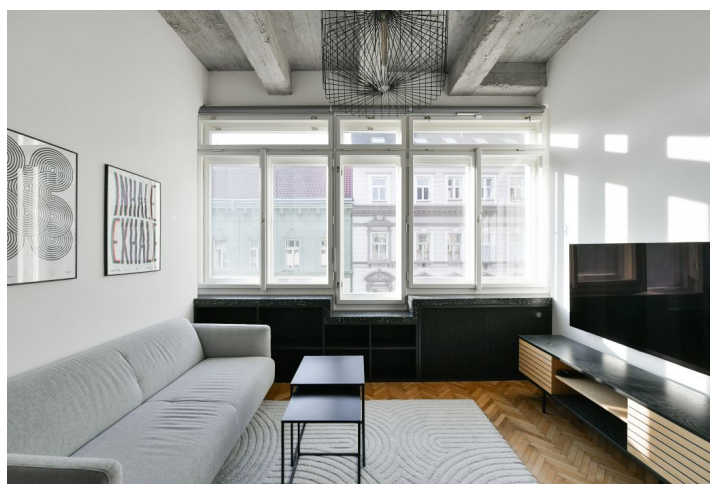
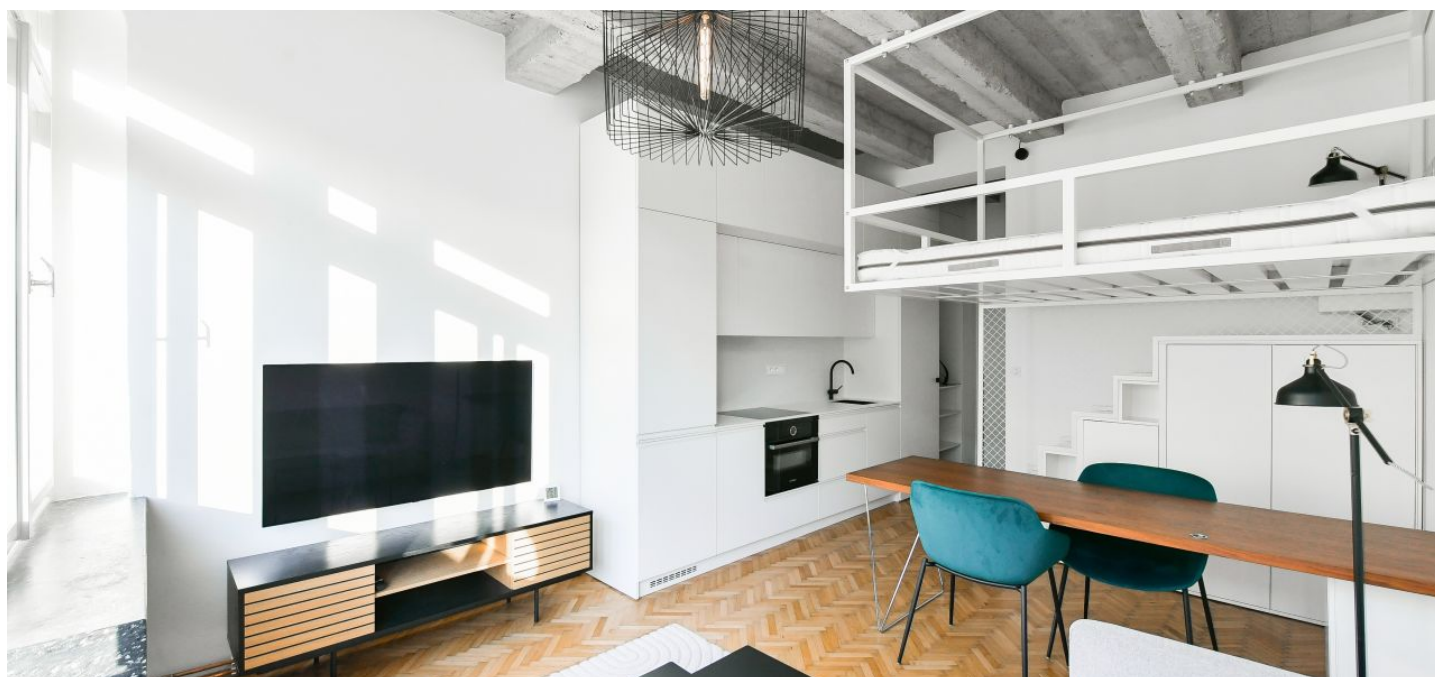




## Apartment Studio (1+kk)

24 m², Prague 7, Holešovice, Pplk. Sochora

Rented





## Apartment Studio (1+kk)

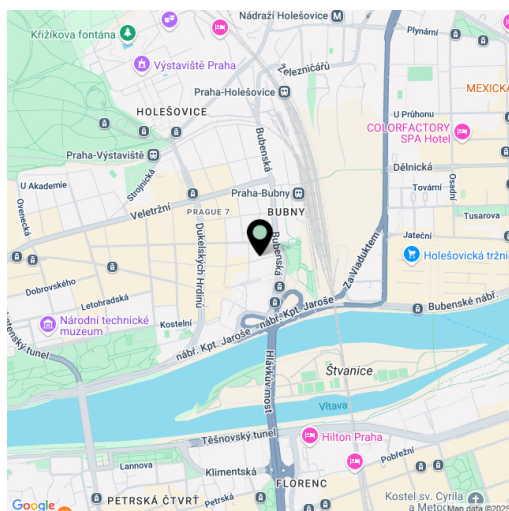
**Rented**24 m<sup>2</sup>, Prague 7, Holešovice, Pplk. Sochora

Total area	24 m <sup>2</sup>
Parking	-
Cellar	-
Service price	Monthly deposit for services, water, heating, Internet, and electricity CZK 3,500.
PENB	G
Reference number	100249
Available from	01.11.2026

This completely refurbished and furnished studio apartment designed by an architect is on the 4th floor of a fully renovated Functionalist building with an elevator. Located mere steps from Stromovka Park (Prague's largest park) and just minutes from popular Letenské Sady Park. An area with excellent amenities and quick access to the city center by tram or on foot—the Vltavská metro station and tram stops are close-by. Conveniently located for the airport and Prague 6 international schools.

The bright south-facing apartment features a living room with a fully fitted open plan kitchen and an elevated sleeping platform, a bathroom with a walk-in shower, toilet, and bidet shower, a built-in **walk-in closet**, plus a small entrance hall.

**Air-conditioning, smart home system**, custom-made facilities, original renovated **hardwood parquet floors**, tiles, security entry door, built-in storage, interior roller blinds, washer, dryer, dishwasher, induction cooktop, combination oven, TV, chip entry to the building.



\* Area of the unit according to the Civil Code. The area consists of the sum total area of the entire unit bounded by perimeter walls.