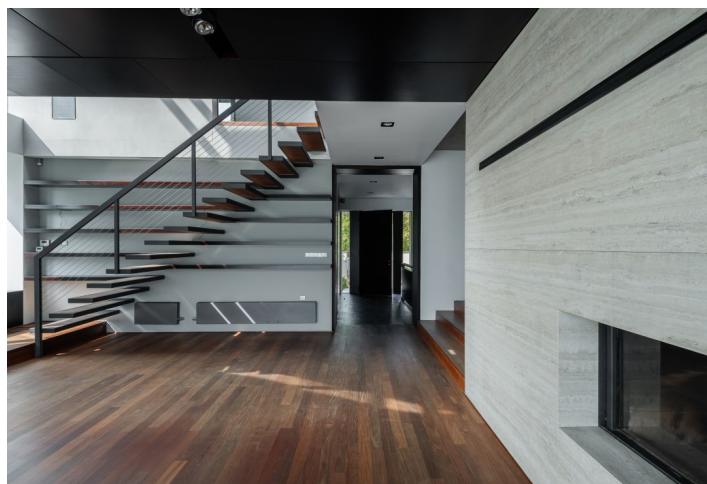


House Five-bedroom (6+1)

Rented

246 m², Prague 6, Břevnov, Filipíny Welserové



House Five-bedroom (6+1)

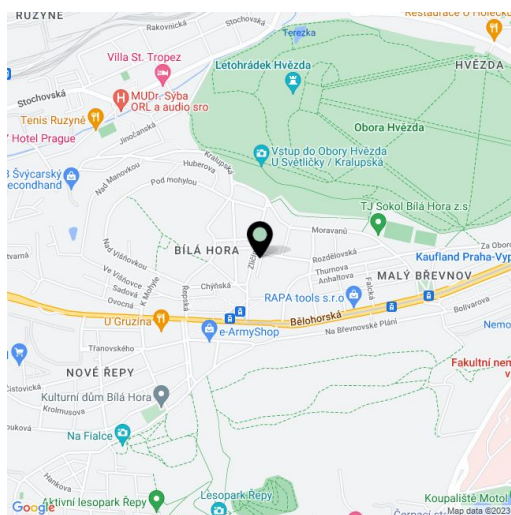
Rented246 m², Prague 6, Břevnov, Filipíny Welsorové

Total area	246 m ²
Plot	484 m ²
Foot print	150 m ²
Garden	334 m ²
Floor area	193 m ²
Terrace	30 m ²
Loggia	23 m ²
Parking	Garage plus parking on the plot.
Garage	Yes
Cellar	-
Service price	Deposit for utilities incl. energy CZK 15,000/month.
PENB	G
Reference number	9534
Available from	05.04.2025

High-quality modern Prague 6 villa for rent. This unfurnished family house with a rooftop terrace and a landscaped garden is located in a quiet and green residential neighborhood just minutes from the Hvězda Summer Castle and Park, close to the Šárka and Ladronka parks and the airport. Good access to the center (trams, buses) and international schools.

The ground floor features a spacious living room with a double-sided fireplace and full glass wall with access to the patio and garden, a fully fitted kitchen with a dining area, a bedroom/study with built-in storage and a fireplace, a guest bedroom with an en-suite shower bathroom, a toilet, and an entry hall. The upper floor has a master bedroom with a full en-suite bathroom and walk-in closet, two additional bedrooms, and a shower bathroom with a toilet. There is a basement floor with garage access, storage, a boiler room, and a laundry room (can be used as a study).

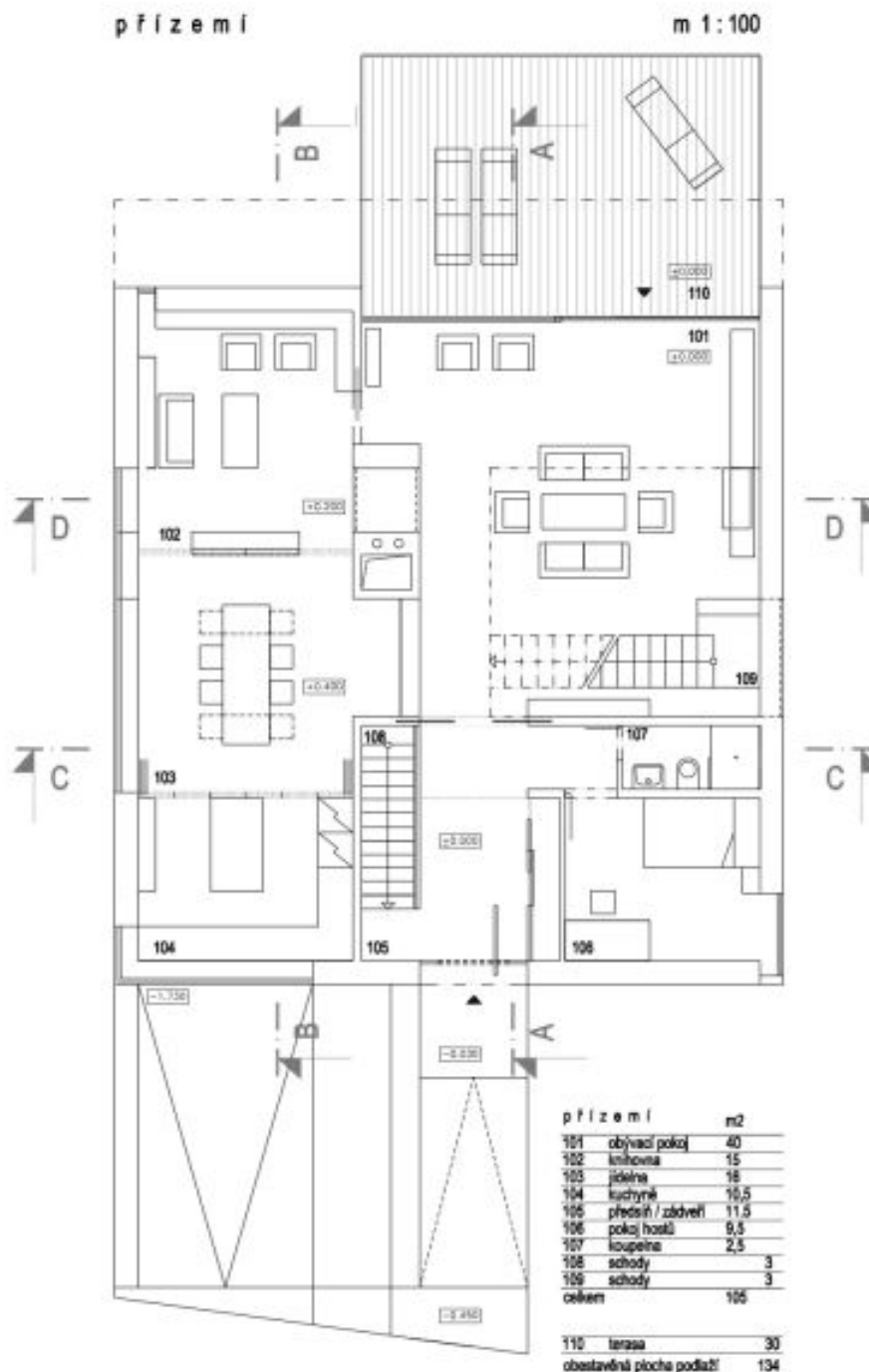
Luxury materials (stone, marble, slate), hardwood floors, built-in storage, central vacuum cleaner, washer, dryer, blinds, alarm connected to a security agency, solar panels, electric garage gate, automatic watering system. Garage and parking on a plot.



House Five-bedroom (6+1)

246 m², Prague 6, Břevnov, Filipíny Welsorové

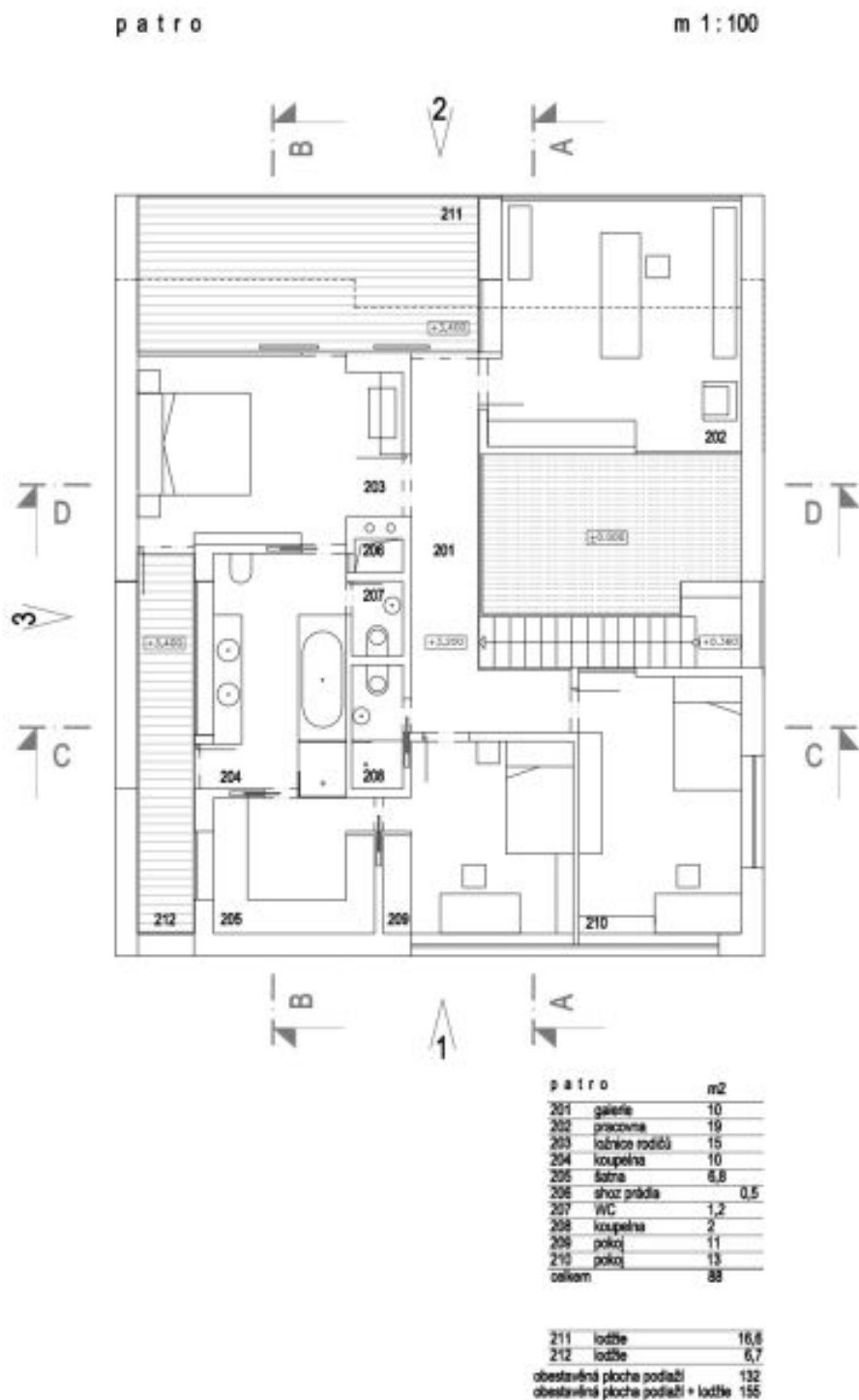
Rented



House Five-bedroom (6+1)

246 m², Prague 6, Břevnov, Filipíny Welsorové

Rented



PDF created with pdfFactory Pro trial version www.pdffactory.com