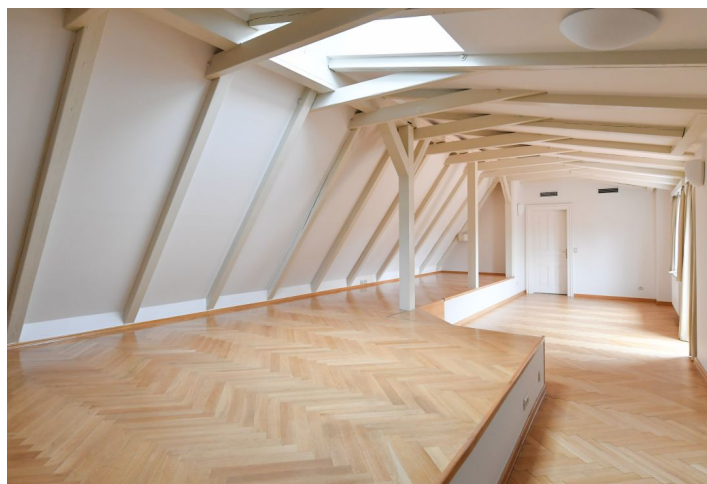


## Apartment Four-bedroom (5+1)

Rented

251 m², Prague 1, Malá Strana, Újezd



## Apartment Four-bedroom (5+1)

Rented

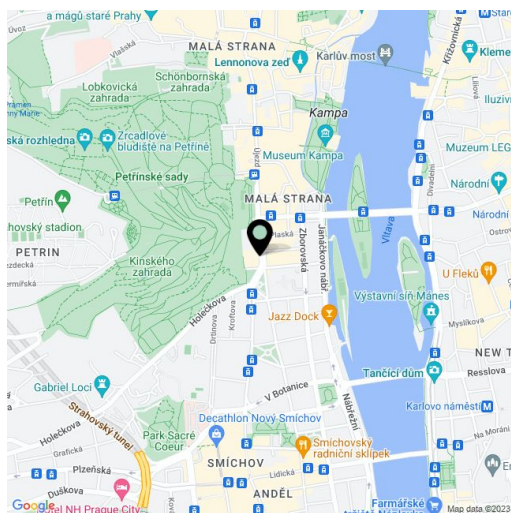
251 m<sup>2</sup>, Prague 1, Malá Strana, Újezd

Total area	286 m <sup>2</sup>
Floor area*	251 m <sup>2</sup>
Terrace	35 m <sup>2</sup>
Parking	Garage parking.
Garage	Yes
Cellar	-
Service price	Service charges and deposit for utilities: CZK 28,000/month + VAT.
PENB	G
Reference number	9287
Available from	Immediately

Boasting a balcony and a large terrace offering beautiful green views of the Hunger Wall and Prague Castle, this elegant, air-conditioned 4-bedroom 3-bathroom split-level attic apartment with garage parking is situated on the fifth top floor of a historic building that has been superbly renovated. Located in the picturesque Malá Strana neighborhood right at the bottom of Petřín Hill Park, within walking distance of the Vltava River and Kampa Park, with full amenities in close vicinity and very quick access to the city center and the Nový Smíchov/Anděl commercial and entertainment zone.

The lower level comprises an expansive living room (8 m vaulted ceilings), a fully fitted eat-in kitchen and a **balcony** with a majestic southern view across the adjacent square. The master suite has a **marble Jacuzzi** bath, a fitted **walk-in closet**, and a **balcony**. There are 2 further bedrooms with access to the **balcony**, a second bathroom, a **walk-in closet**, and a storage room. The upper floor features a spacious attic room/4th bedroom and a sunny **terrace** overlooking Petřín Hill and Prague Castle perfect for entertaining, plus a third bathroom and a laundry room.

Other features include a reception, well-maintained public areas, **hardwood parquet floors**, blinds, a washer, a dryer, a dishwasher, a microwave oven, monitored alarm system, a video entry phone, and an elevator. **Garage parking** in the building is available at €160/month.



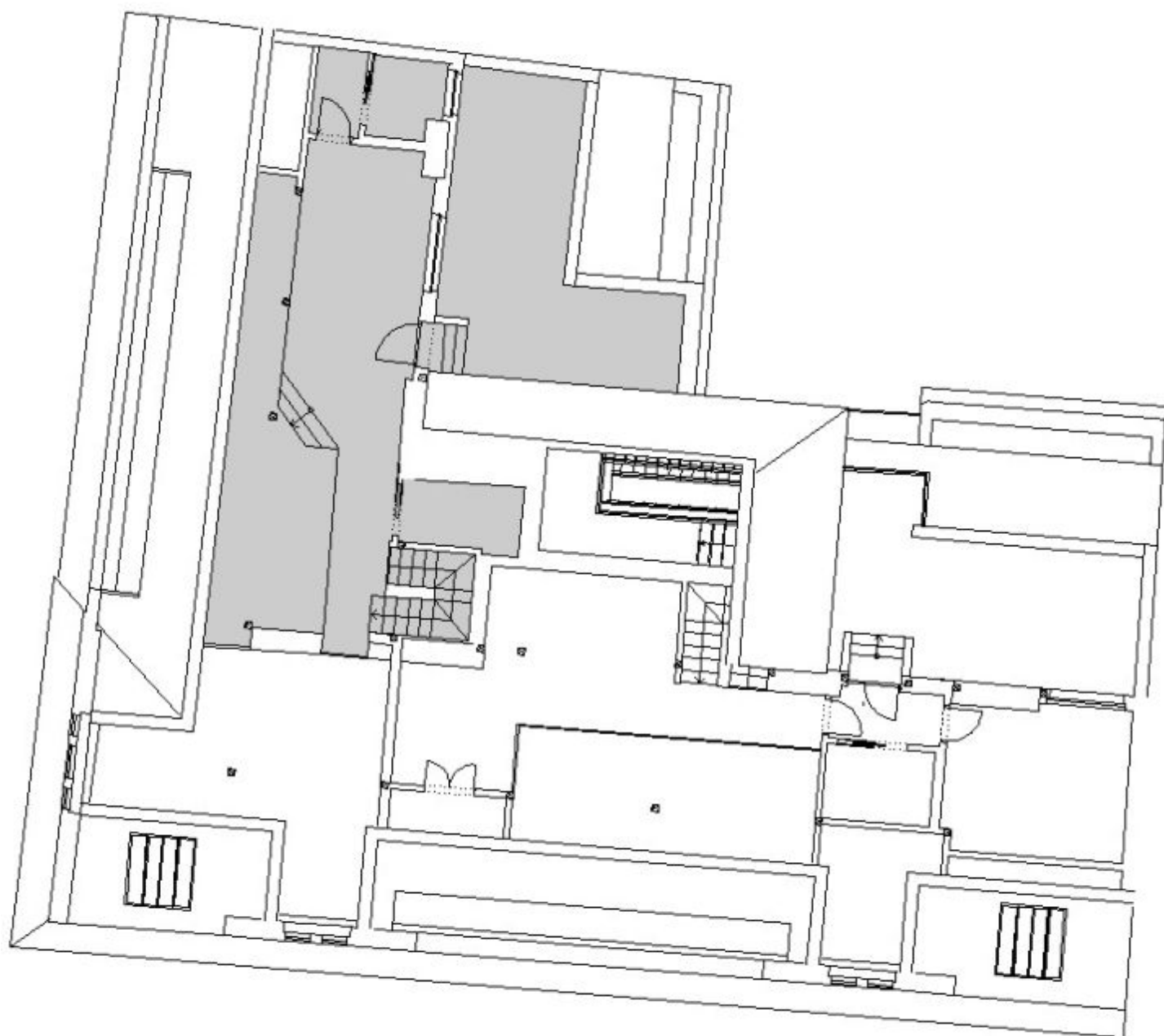
\* Area of the unit according to the Civil Code. The area consists of the sum total area of the entire unit bounded by perimeter walls.



## Apartment Four-bedroom (5+1)

Rented

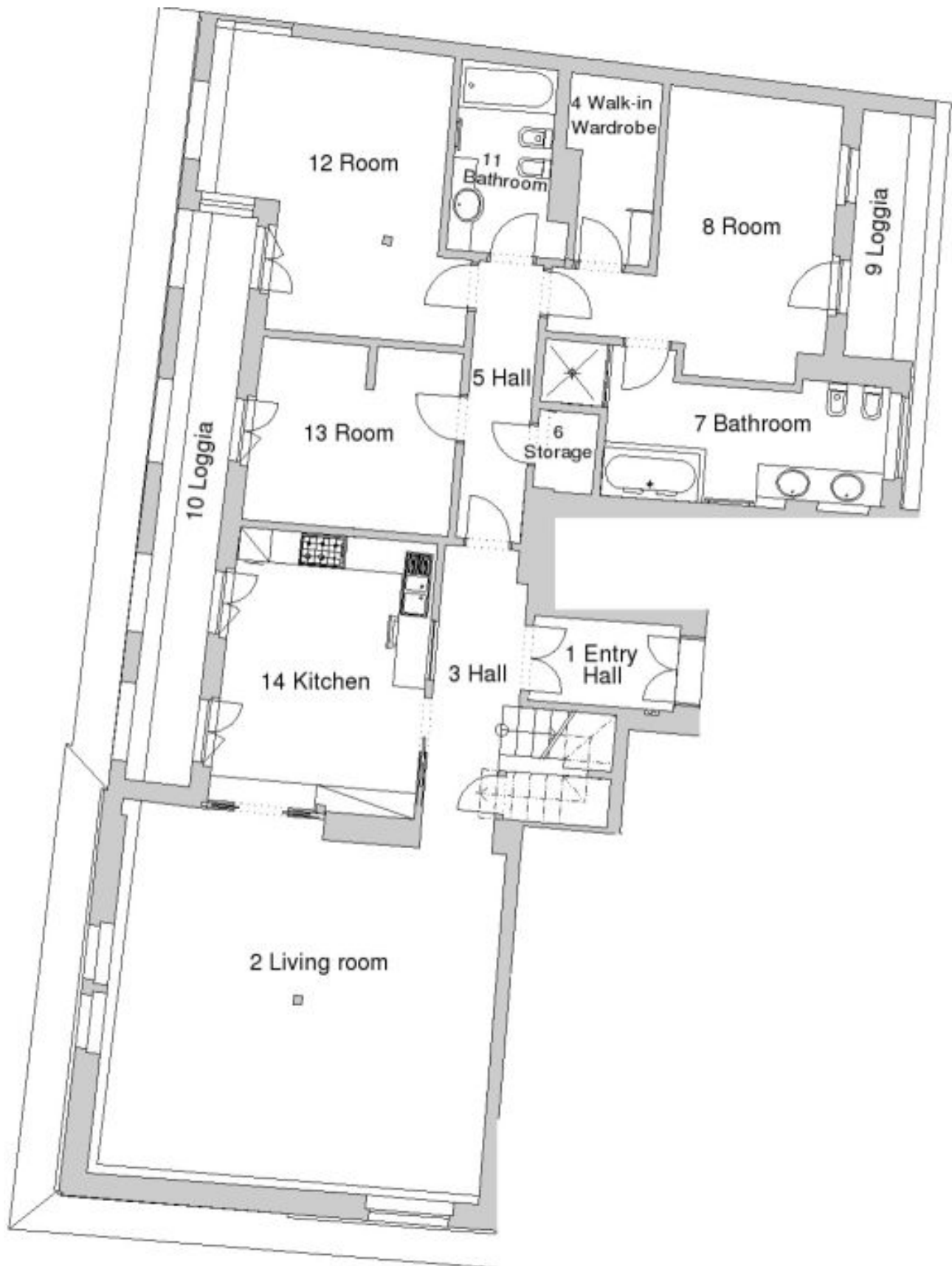
251 m<sup>2</sup>, Prague 1, Malá Strana, Újezd



## Apartment Four-bedroom (5+1)

Rented

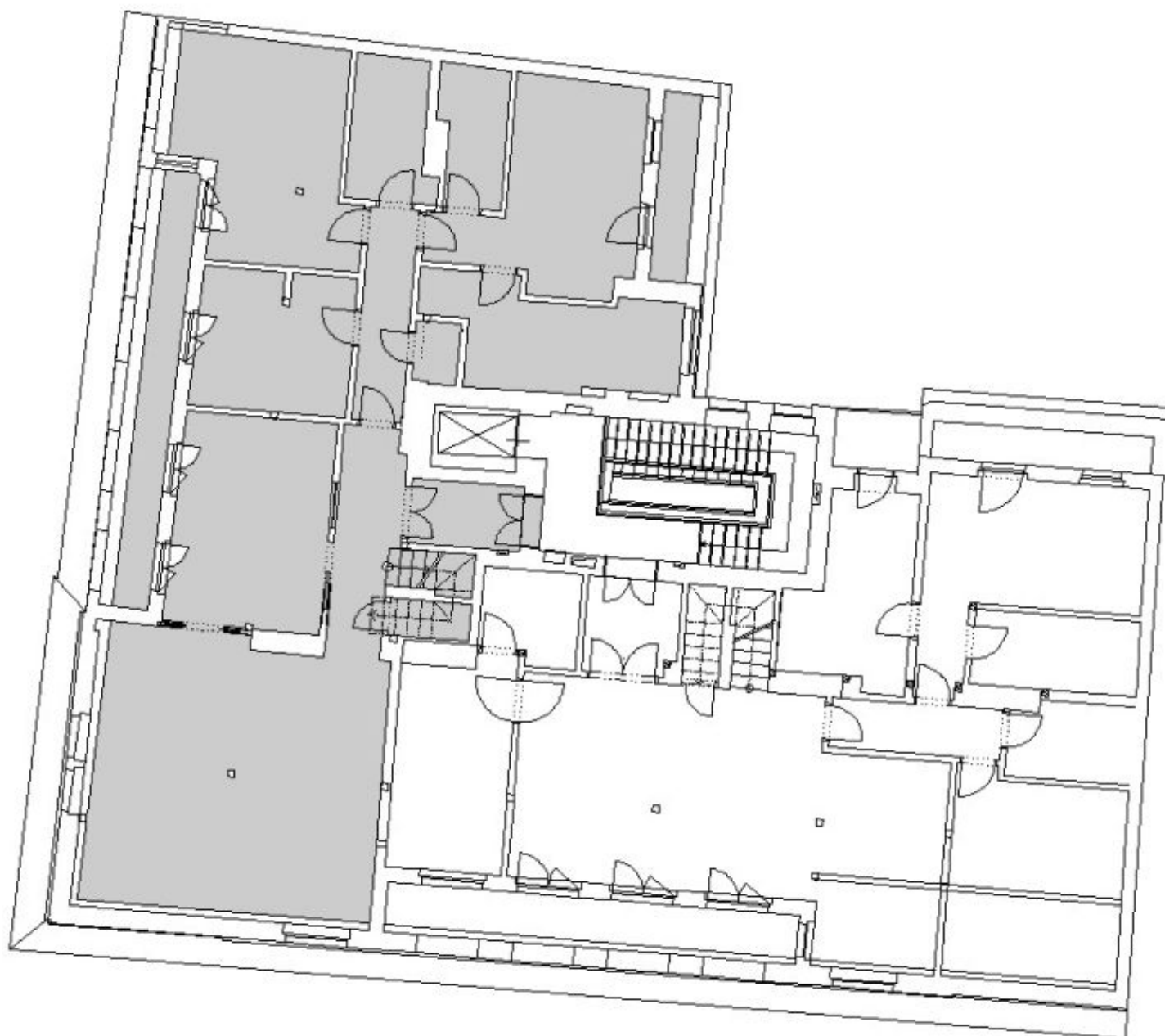
251 m<sup>2</sup>, Prague 1, Malá Strana, Újezd



## Apartment Four-bedroom (5+1)

Rented

251 m<sup>2</sup>, Prague 1, Malá Strana, Újezd



## Apartment Four-bedroom (5+1)

Rented

251 m<sup>2</sup>, Prague 1, Malá Strana, Újezd

