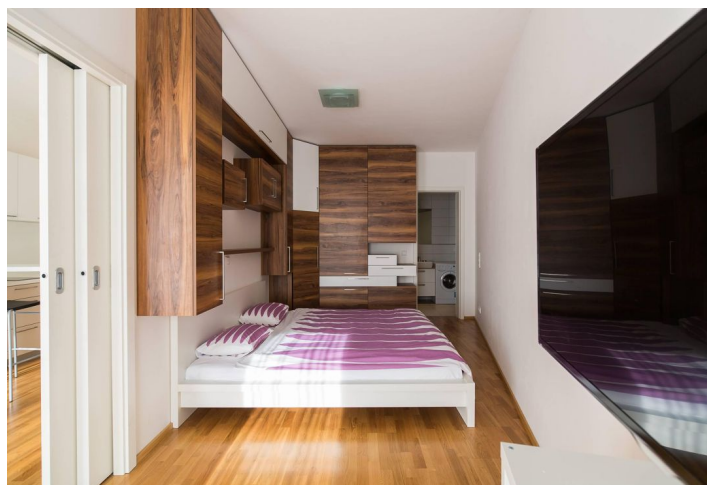


## Apartment One-bedroom (2+kk)

Rented

45 m<sup>2</sup>, Prague 4, Michle, Baarova



# Apartment One-bedroom (2+kk)

**Rented**45 m<sup>2</sup>, Prague 4, Michle, Baarova

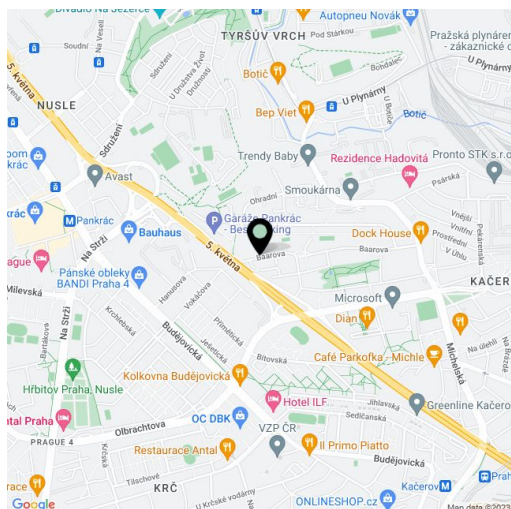
<b>Total area</b>	49 m <sup>2</sup>
<b>Floor area*</b>	45 m <sup>2</sup>
<b>Balcony</b>	4 m <sup>2</sup>
<b>Parking</b>	Garage parking available
<b>Garage</b>	Yes
<b>Cellar</b>	Yes
<b>PENB</b>	G
<b>Reference number</b>	9249
<b>Available from</b>	Immediately

**Furnished 1-bedroom modern flat with a 4 m<sup>2</sup> balcony situated on the 2nd floor of a new residential development with 24-hour reception, a lift, security, park, children's playground and underground parking. Location with a full range of amenities, near the BB Centrum and Brumlovka multipurpose centers, with bus connections to Budějovická and Pankrác metro stations and quick access to the city center.**

The interior includes a living room with a fully fitted open kitchen and balcony facing the park, one bedroom, en-suite bathroom (bathtub, sink, toilet), guest toilet, and entry hall with built-in wardrobes.

Wooden floors, built-in storage, security entry door, French windows, washer, dishwasher, TV, audio entry phone. Cellar, chip entry to the building. One parking space included. Common building charges CZK 3,000/month including electricity.

Interior 45 m<sup>2</sup>, balcony 4 m<sup>2</sup>.



\* Area of the unit according to the Civil Code. The area consists of the sum total area of the entire unit bounded by perimeter walls.