

Apartment Two-bedroom (3+1)

Rented

115 m², Prague 7, Holešovice, Strossmayerovo náměstí



Apartment Two-bedroom (3+1)

Rented115 m², Prague 7, Holešovice, Strossmayerovo náměstí

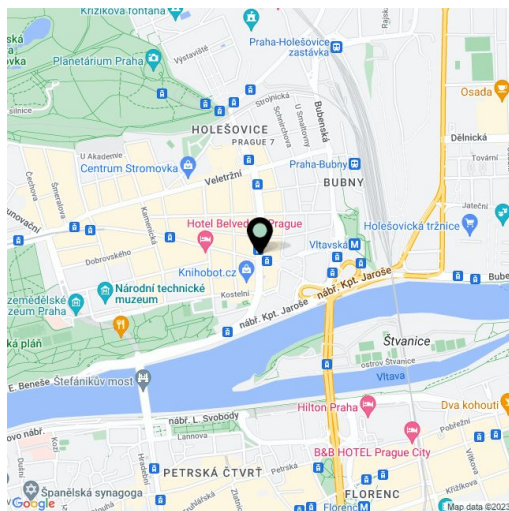
Total area	125 m ²
Floor area*	115 m ²
Terrace	10 m ²
Parking	-
Cellar	-
PENB	G
Reference number	9009
Available from	Immediately

Renovated unfurnished 2-bedroom 2-bathroom split-level attic flat with a terrace situated on the 5th and 6th floor of a reconstructed Art Nouveau building with lift, preserved original features and a thoughtful approach to layout and amenities. Convenient location close to the Stromovka and Letenské sady parks, with quality amenities and quick access to the city center - numerous tram lines steps from the building, Vltavská metro a minute away.

The apartment has generously sized rooms, lobby with a gallery, terrace off the living room, bathrooms with bath tub, shower and bidet (one on each floor), and fully equipped kitchen.

Other features include air-conditioning, parquet floors, storage, security lock, dishwasher, washer, dryer, satellite and cable TV connection, ISDN. Common building charges CZK 2,400/month. Utilities will be transferred to the tenant's name. Despite the photos the apartment is UNFURNISHED. Available from July 2017.

Flat 115 m² + terrace 9,56 m².

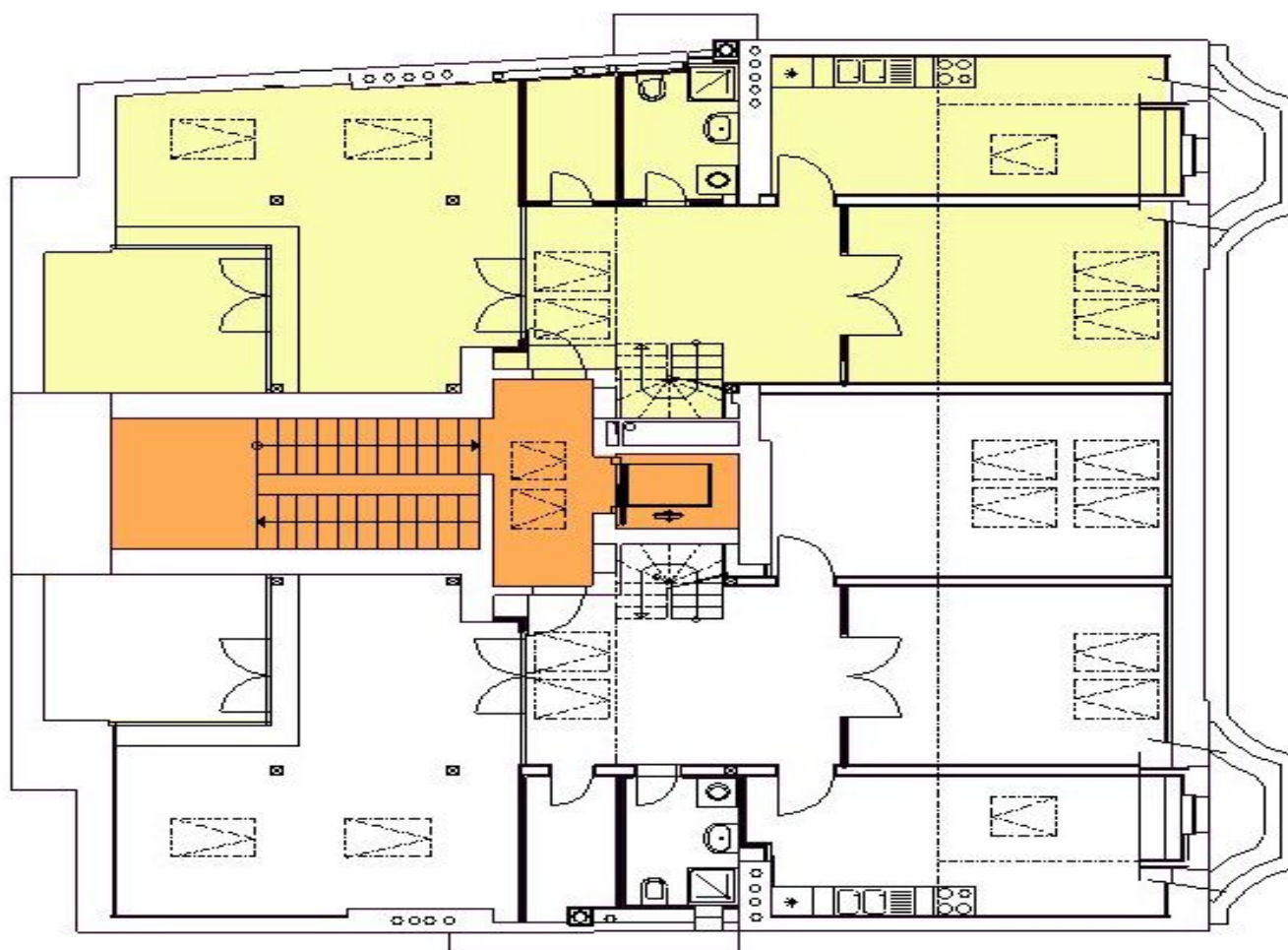


* Area of the unit according to the Civil Code. The area consists of the sum total area of the entire unit bounded by perimeter walls.

Apartment Two-bedroom (3+1)

Rented

115 m², Prague 7, Holešovice, Strossmayerovo náměstí



Apartment Two-bedroom (3+1)

Rented

115 m², Prague 7, Holešovice, Strossmayerovo náměstí

