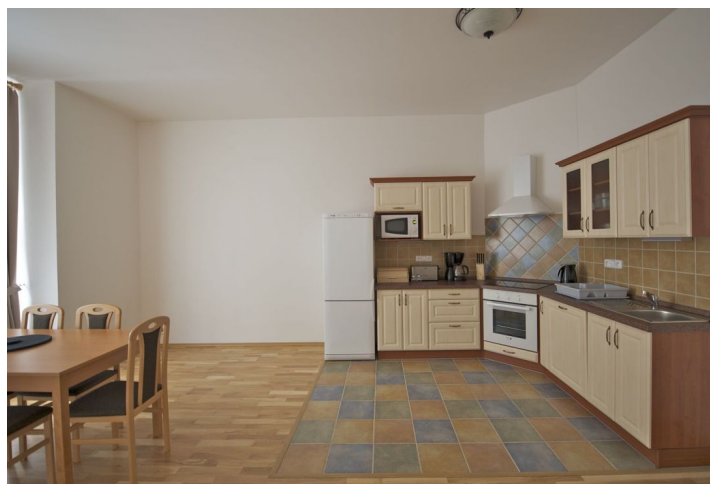


Apartment Two-bedroom (3+kk)

Rented

110 m², Prague 2, Vinohrady, Mánesova



Apartment Two-bedroom (3+kk)

Rented

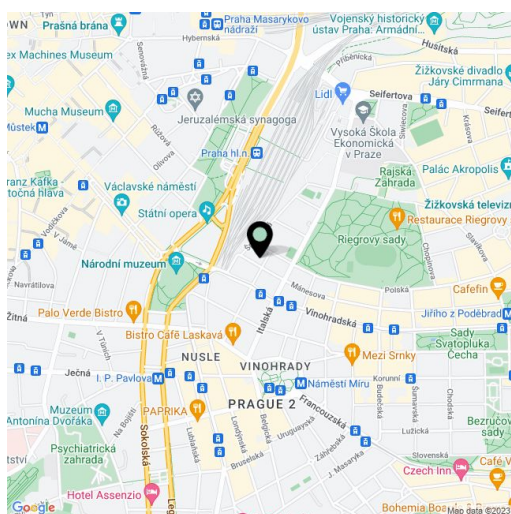
110 m², Prague 2, Vinohrady, Mánesova

Total area	110 m ²
Parking	Parking available for CZK 2.000/month.
Cellar	-
PENB	G
Reference number	8688
Available from	Immediately

Reconstructed fully furnished 2-bedroom flat on the 2nd floor of a residential building after reconstruction with a new lift located just moments from Jiřího z Poděbrad metro station, within easy reach of many restaurants, shops and the large Riegrovy sady park.

The apartment includes living room with a fully fitted open kitchen and dining area (partly separated by a partition), two bedrooms, bathroom with bath tub, separate toilet, walk-in closet/storage room, and a spacious entry hall.

Parquet floors, washer/dryer, dishwasher, microwave, dishes, TV, satellite connection, WiFi Internet, audio entry phone. Short term possible for a higher rent. Common building charges CZK 3.000/month. Utilities (electricity, gas, water) CZK 2.000/person/month.



* Area of the unit according to the Civil Code. The area consists of the sum total area of the entire unit bounded by perimeter walls.