



## Apartment Two-bedroom (3+kk)

Sold

135 m<sup>2</sup>, Prague 2, Vinohrady, Mánesova





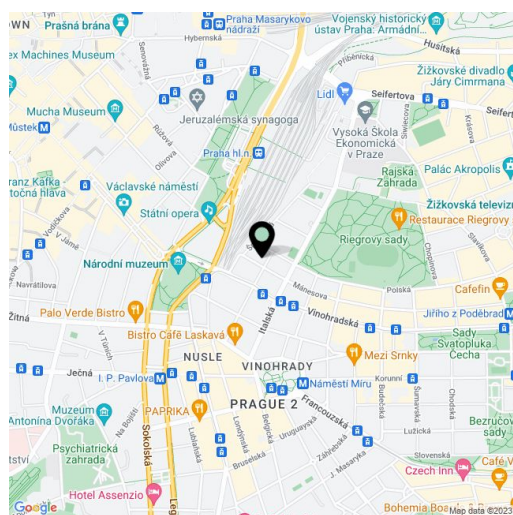
## Apartment Two-bedroom (3+kk)

**Sold**135 m<sup>2</sup>, Prague 2, Vinohrady, Mánesova

Total area	145 m <sup>2</sup>
Floor area*	135 m <sup>2</sup>
Terrace	10 m <sup>2</sup>
Parking	-
Cellar	-
PENB	G
Reference number	8265

**Bright 2-bathroom split-level attic apartment with a terrace on the 6th floor of a refurbished apartment building with a lift. Located in a quiet tree lined street in the popular residential area of Vinohrady moments from Jiřího z Poděbrad metro station, and convenient to shopping and quality restaurants and cafes.**

The lower level includes an open plan area with living room and terrace access, dining space and fully fitted kitchen, one bedroom, bathroom with bath tub and double sink, utility/boiler room, toilet, and an entry hall. The upper level features one more bedroom, en-suite shower bathroom with sink and toilet, and entry corridor. Air-conditioning, parquet and tile floors, carpets, wood staircase, built-in storage, security door, audio entry phone. Interior 135,1 m<sup>2</sup>, terrace 9,8 m<sup>2</sup>.



\* Area of the unit according to the Civil Code. The area consists of the sum total area of the entire unit bounded by perimeter walls.

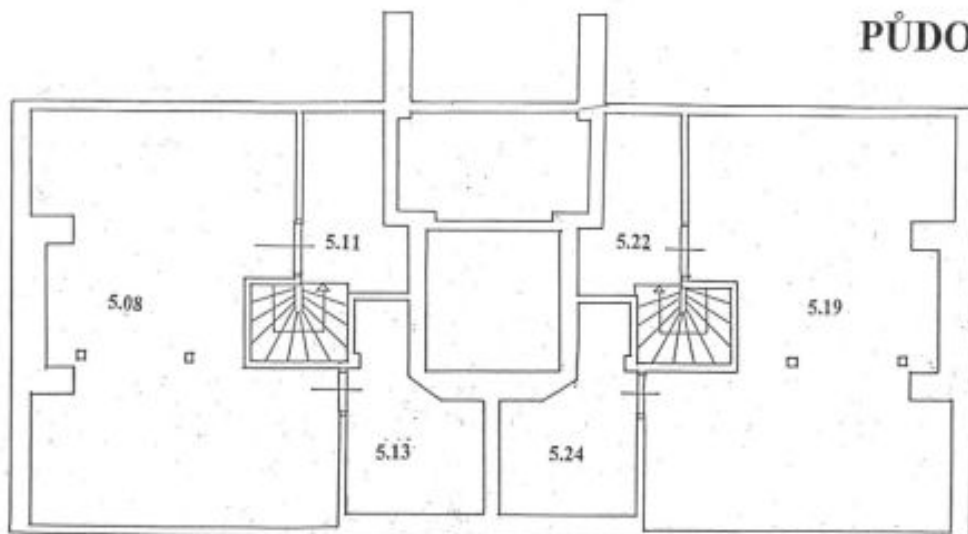


## Apartment Two-bedroom (3+kk)

Sold

135 m<sup>2</sup>, Prague 2, Vinohrady, Mánesova

### PŮDORYS 6. PATRA (7.N)



### PŮDORYS 5. PATRA (6.NP)

