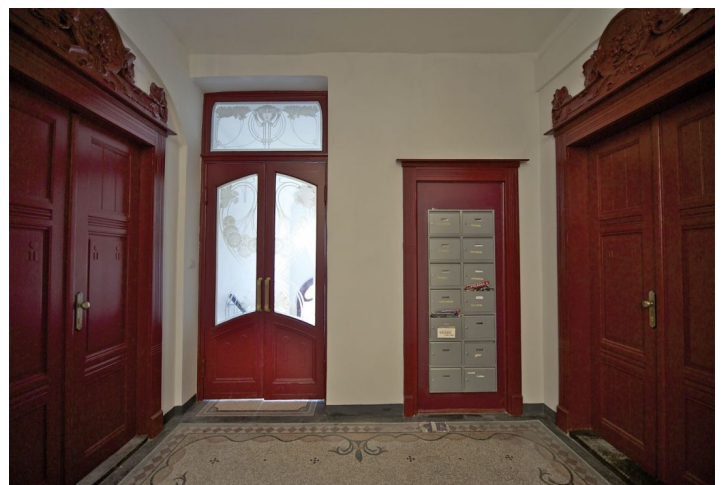


## Apartment Two-bedroom (3+1)

Sold

98 m<sup>2</sup>, Prague 1, Nové Město, Masarykovo nabreží

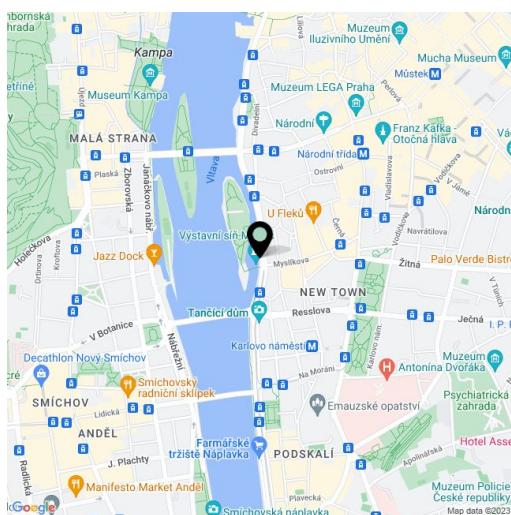


## Apartment Two-bedroom (3+1)

**Sold**98 m<sup>2</sup>, Prague 1, Nové Město, Masarykovo nabřeží

|                         |                    |
|-------------------------|--------------------|
| <b>Total area</b>       | 102 m <sup>2</sup> |
| <b>Floor area*</b>      | 98 m <sup>2</sup>  |
| <b>Balcony</b>          | 4 m <sup>2</sup>   |
| <b>Parking</b>          | -                  |
| <b>Cellar</b>           | -                  |
| <b>PENB</b>             | G                  |
| <b>Reference number</b> | 8017               |

Spacious riverbank apartment on the 1st floor of a completely renovated Art Nouveau apartment building with a new lift located opposite the Slovansky island, a 5 minute walk to the National Theater. The apartment with balcony consists of an entry hall, living room, kitchen, 2 bedrooms, 2 bathrooms and a guest toilet. The living room and bedroom provide panoramic views of the Vltava river, Prague Castle and the Petrin hill. Original features preserved, unique location! Suitable for reconstruction.



\* Area of the unit according to the Civil Code. The area consists of the sum total area of the entire unit bounded by perimeter walls.

## Apartment Two-bedroom (3+1)

Sold

98 m<sup>2</sup>, Prague 1, Nové Město, Masarykovo nábřeží

