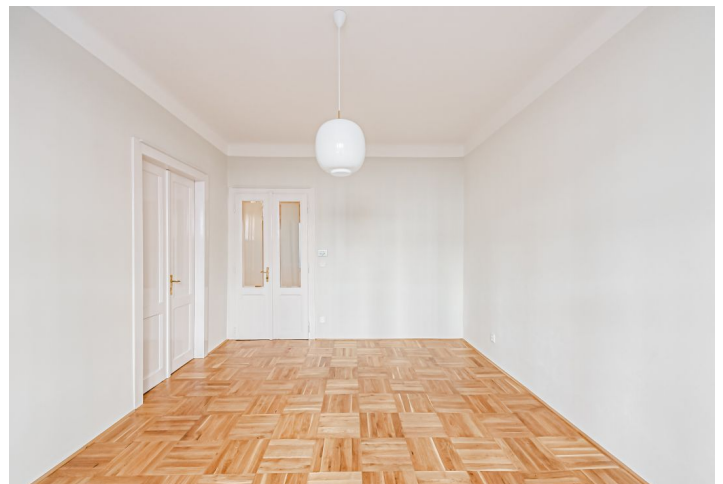


Apartment Two-bedroom (3+1)

Rented

103 m², Prague 2, Nové Město, Podskalská



Apartment Two-bedroom (3+1)

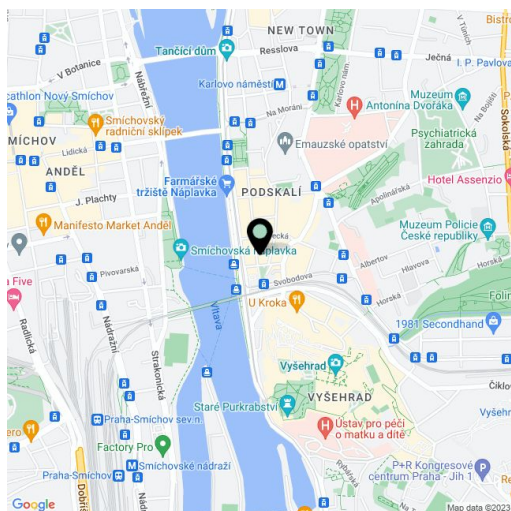
Rented103 m², Prague 2, Nové Město, Podskalská

Total area	103 m ²
Parking	-
Cellar	-
PENB	G
Reference number	7929
Available from	Immediately

This refurbished classic 2-bedroom apartment on the 1st floor of a completely reconstructed traditional building with an elevator and many preserved original details is centrally located in a quiet residential neighborhood a minutes' walk from the Vltava River, two minutes from the Karlovo náměstí metro station and tram lines.

The interior features a central entry hall, a living room with a bay window, a fully fitted new kitchen, two bedrooms, a bathroom with bathtub, a separate toilet, and a walk-in closet.

High ceilings, wooden floors, double interior doors, dishwasher, video entry phone. Common building charges CZK 750/person/month. Utilities are billed separately.



* Area of the unit according to the Civil Code. The area consists of the sum total area of the entire unit bounded by perimeter walls.