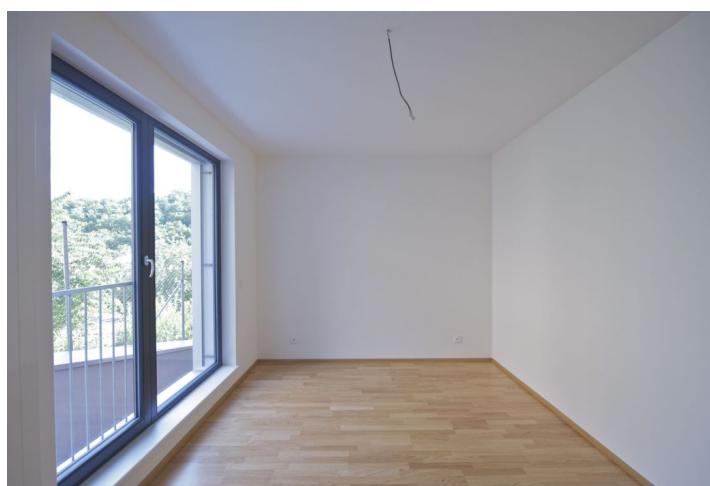


## Apartment Two-bedroom (3+kk)

Sold

91 m<sup>2</sup>, Prague 5, Košíře, U Vojanky



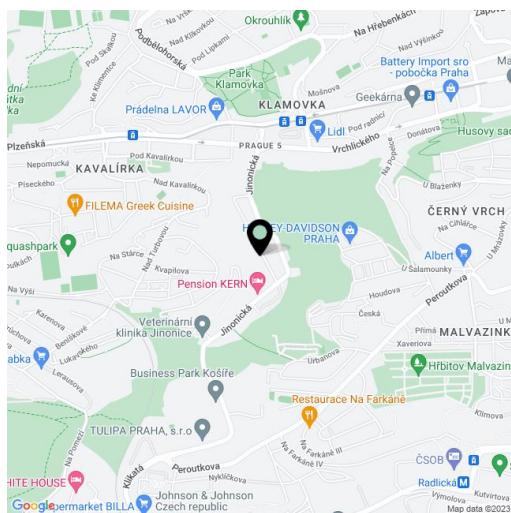
## Apartment Two-bedroom (3+kk)

**Sold**

91 m<sup>2</sup>, Prague 5, Košíře, U Vojanky

<b>Total area</b>	96 m <sup>2</sup>
<b>Floor area*</b>	91 m <sup>2</sup>
<b>Terrace</b>	5 m <sup>2</sup>
<b>Parking</b>	200 000
<b>Garage</b>	Yes
<b>Cellar</b>	Yes
<b>PENB</b>	G
<b>Reference number</b>	7245

The Pod Bertramkou residence is located on the quiet U Vojanky street in the Prague 5 district of Košíře. The villa neighborhood from the period of the so-called First Czechoslovak Republic offers all necessary amenities and a very good connection with the center of Prague. Sports lovers will appreciate tennis and squash courts or the indoor climbing wall in the so-called Cibulka area or the golf course in Motol. The Anděl and Nový Smíchov shopping zones offer ideal opportunities for shopping and entertainment. The project consists of two mutually connected buildings featuring the total of 20 high standard apartments in sizes from one to four bedroom apartments covering the area from 63 to 236 square meters. This particular apartment offers an open-plan kitchen, dining area and living room, 2 bedrooms, and 2 bathrooms. From the master bedroom there is an access to the terrace. The price of the property includes one parking space and a cellar of the size of 5.78 m<sup>2</sup>. The interior of the apartment is 90.58 m<sup>2</sup>, the terrace is 5.65 m<sup>2</sup>. The purchase price is subject to VAT additional.



\* Area of the unit according to the Civil Code. The area consists of the sum total area of the entire unit bounded by perimeter walls.

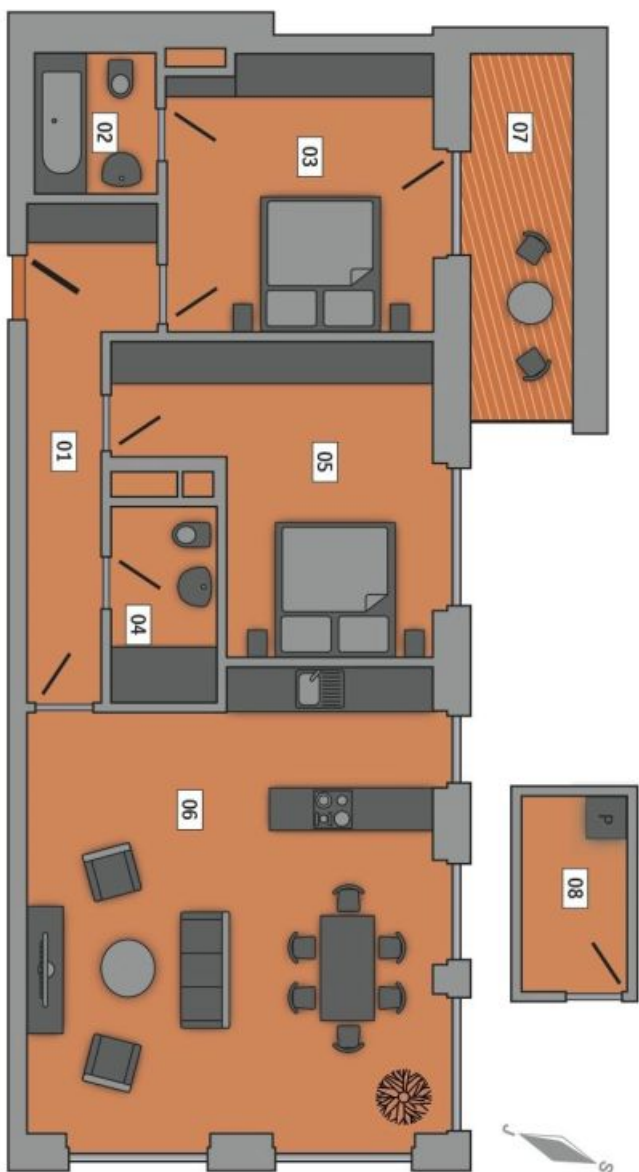
## Apartment Two-bedroom (3+kk)

91 m², Prague 5, Košíře, U Vojanky

Sold

# Rezidence POD BERTRAMKOU

Vytříbený styl bydlení.



Byt č. 3.1/3+kk

Byt  
Číslo bytu 3.1  
Podlaží 3.NP  
Typ 3+kk  
Čistá plocha bytu 90,58 m²  
Terasa 5,65 m²  
Plocha celkem 96,23 m²

Místnosti  
01 Chodba 9,91 m²  
02 Koupelna a wc 3,38 m²  
03 Pokoj 15,55 m²  
04 Koupelna a wc 3,69 m²  
05 Pokoj 15,36 m²  
06 Obývací pokoj, kuchyň a jídelna 39,10 m²  
07 Terasa 5,65 m²  
08 Prádelna 3,59 m²

