

House Eight-bedroom (9+1)

Rented

365 m², Prague 6, Dejvice, Na Viničných horách



House Eight-bedroom (9+1)

Rented

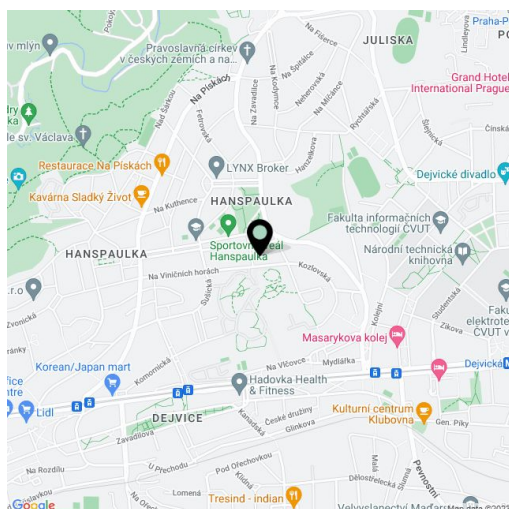
365 m², Prague 6, Dejvice, Na Viničních horách

Plot	1 223 m ²
Foot print	477 m ²
Garden	746 m ²
Parking	Double garage.
Garage	Yes
Cellar	-
Service price	Utilities approx. CZK 20,000/month.
PENB	G
Reference number	6816
Available from	Immediately

This completely reconstructed, partly furnished 7-8-bedroom 4-bathroom villa is situated in the prestigious Prague 6 residential neighborhood of Hanspaulka. Convenient to the ISP and Riverside international schools. Good transportation connections, basic amenities incl. an English speaking kindergarten close-by.

The main floor features a bright living room connected to the dining room, a fully fitted kitchen with a serving window, a hall, a foyer with access to the garden, and a toilet. The first floor features a master bedroom with an ensuite bathroom (bathtub) and balcony, 2 additional bedrooms, a shower bathroom, a hall, and a balcony. The second floor includes 2 smaller bedrooms, 1 bedroom with a preparation for a kitchen, a bathroom (bathtub), a toilet, and a utility room. With a private entrance, the lower ground floor could be used as a separate unit incl. a living room, a kitchen, 1 bedroom, a shower bathroom, a toilet, and a laundry room.

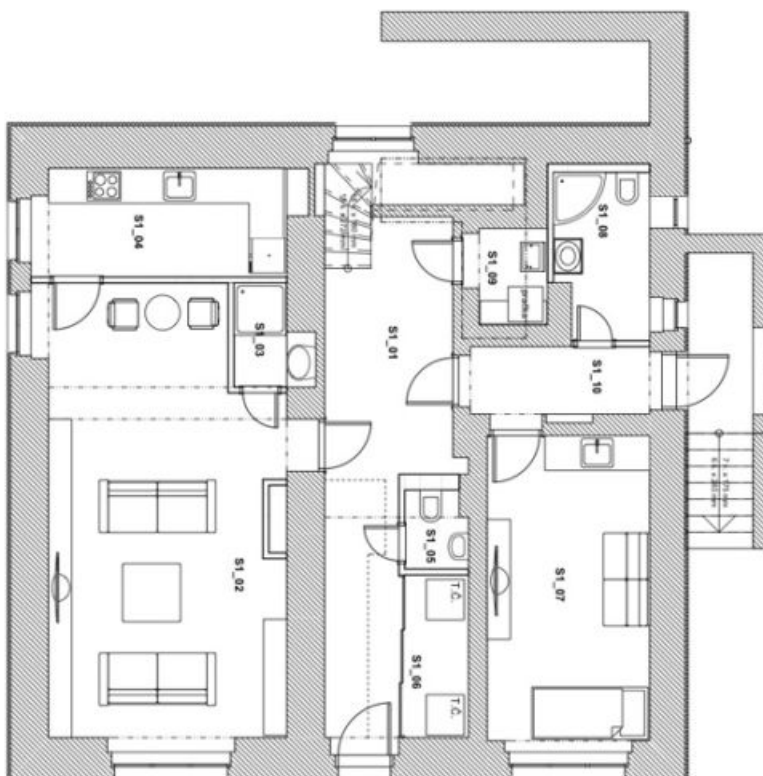
Three entrances to the house, security system connected to the ARC and CCTV system, air-conditioning, parquet floors and tiles, wooden staircase, blinds, Miele appliances, TV, video entry phone, alarm, balconies total of 15 m². Garden house with kitchenette on the plot. Double garage.



House Eight-bedroom (9+1)

365 m², Prague 6, Dejvice, Na Viničních horách

Rented



OZN.	AMENO	PLOCHAM ²	PODLAHA
S1_01	HALA	15,31	DLAZBA
S1_02	JEDNACI MISTNOST	30,82	LAMINO
S1_03	SPRCHA	1,63	DLAZBA
S1_04	KUCHYNKA	8,41	DLAZBA
S1_05	WC	1,42	DLAZBA
S1_06	KOTEL	3,08	DLAZBA
S1_07	POKOU SPRAYCE	15,26	LAMINO
S1_08	KOUPELNA	4,63	DLAZBA
S1_09	PRANI	2,25	DLAZBA
S1_10	CHODBA	3,99	DLAZBA

Dům Na viničních horách
- návrh interiéru



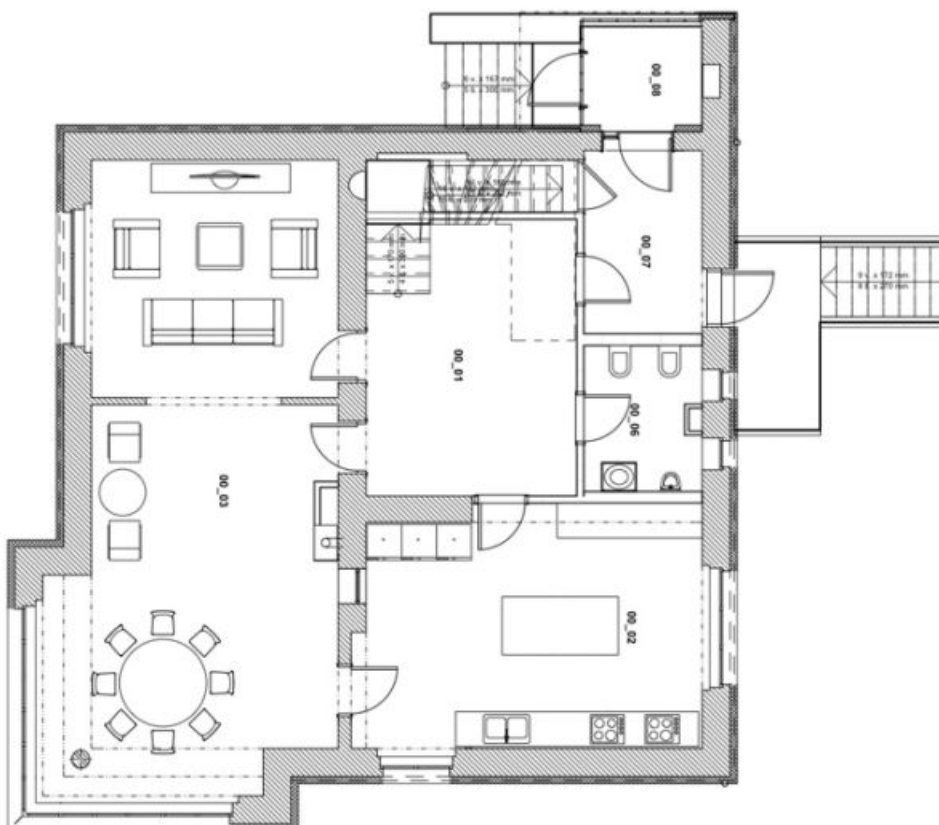
nábytek_suteren

Číslo výkresu:			N.1
Datum:	Formát:	Měřítko:	
6. 10. 2010	A4	1 : 100	

House Eight-bedroom (9+1)

365 m², Prague 6, Dejvice, Na Viničních horách

Rented



OZN	JMENO	PLOCHAMN ²	PODLAHA
00_01	Terasa 1	4,92	DLAZBA
00_02	HALA	17,28	DLAZBA
00_03	KUCHYN	24,82	DLAZBA
00_04	OBYVACI POKOJ	49,18	DLAZBA
00_05	WC	4,96	DLAZBA
00_06	CHODBA	6,53	DLAZBA
00_07	ZDVERI	3,63	DLAZBA

Dům Na viničních horách
- návrh interiéru



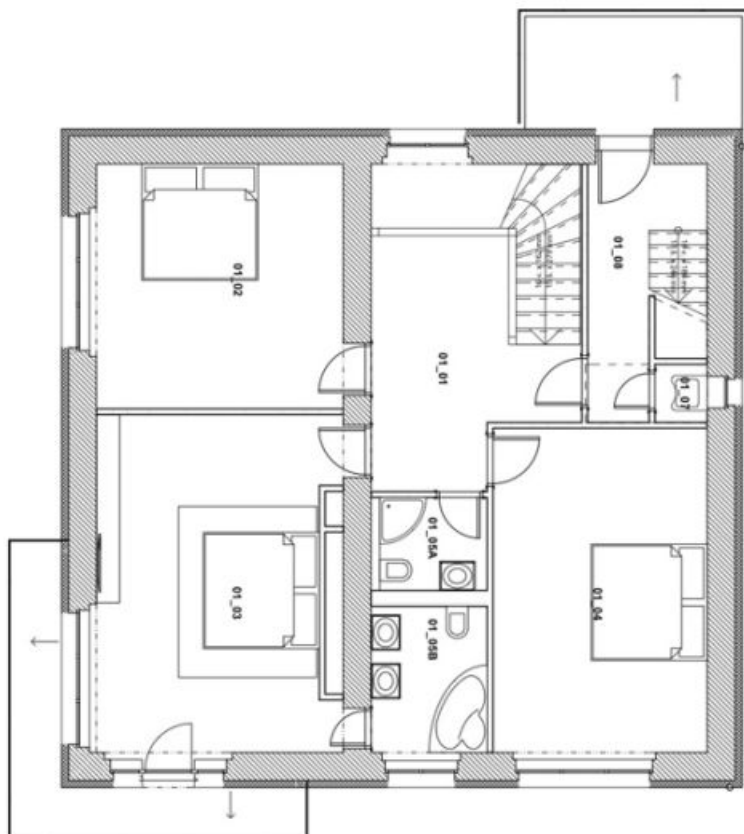
nábytek přízemí

Číslo výkresu:			N 2
Datum:	Formát:	Měřítko:	
6. 10. 2010	A4	1 : 100	

House Eight-bedroom (9+1)

365 m², Prague 6, Dejvice, Na Viničních horách

Rented



OZN	JMENO	PLOCHAM ²	PROUŠNA
	Terasa 2	4,92	DLAŽBA
	Terasa 2	4,92	DLAŽBA
01_01	HALA	11,67	PARKETY
01_02	LOŽNICE	18,38	PARKETY
01_03	LOŽNICE	24,22	PARKETY
01_04	POKOJ	20,87	PARKETY
01_05A	KOUPELNA	3,20	DLAŽBA
01_05B	KOUPELNA	5,22	DLAŽBA

Dům Na viničních horách
- návrh interiéru



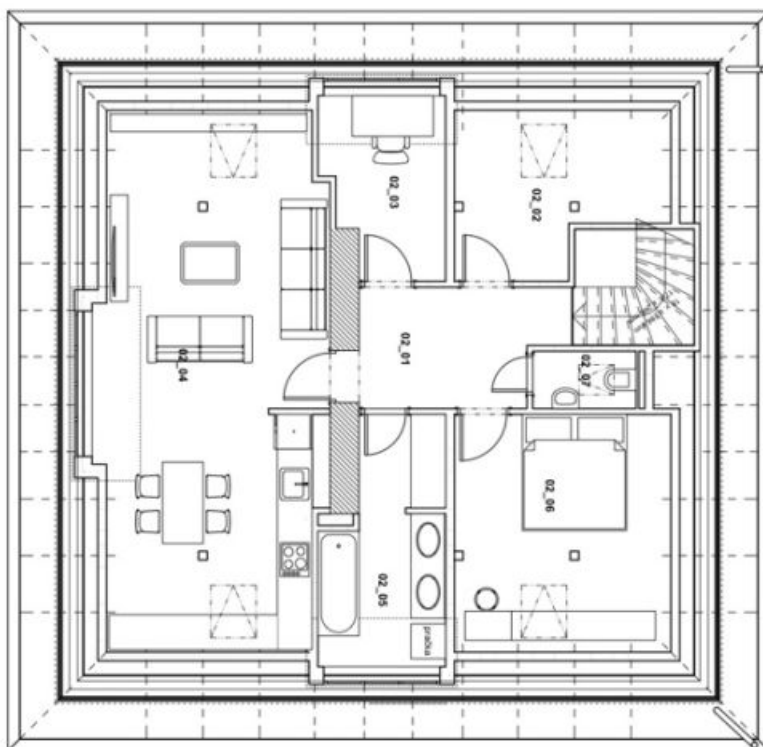
nábýtek_patro

Číslo výkresu:			N.3
Datum:	Formát:	Měřítko:	
6. 10. 2010	A4	1 : 100	

House Eight-bedroom (9+1)

365 m², Prague 6, Dejvice, Na Viničních horách

Rented



TABULKA MÍSTNOSTÍ			
OZN.	JMENO	PLŮCHY	PODLAHA
02_01	HALA	7,31	LAMINO
02_02	SATNA	9,18	LAMINO
02_03	PRACOVNA	6,11	LAMINO
02_04	OBYTNA KUCHYŇ	34,37	LAMINO
02_05	KOJPELNA	8,05	DLAZBA
02_06	LOZNICE	15,21	LAMINO
02_07	WC	1,75	DLAZBA

Dům Na viničních horách
- návrh interiéru



nábytek_podkroví

Číslo výkresu: N.4		
Datum: 6. 10. 2010	Formát: A4	Měřítko: 1 : 100