

House Three-bedroom (4+kk)

Rented

150 m², Prague 2, Nové Město, Horská



House Three-bedroom (4+kk)

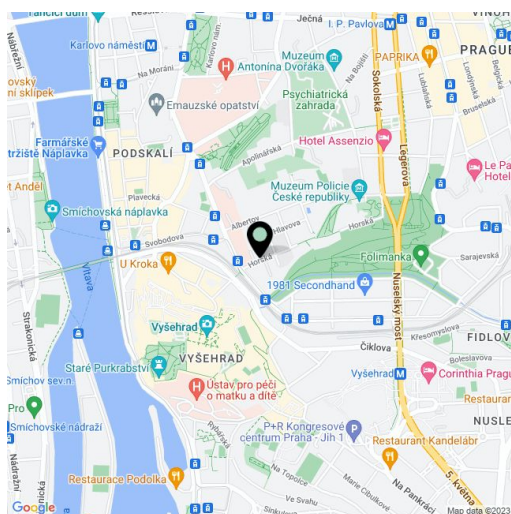
Rented150 m², Prague 2, Nové Město, Horská

| | |
|------------------|----------------------------------|
| Plot | 154 m ² |
| Parking | Outdoor parking space available. |
| Cellar | - |
| PENB | G |
| Reference number | 6298 |
| Available from | Immediately |

A very special Prague house for rent! Furnished 2-3-bedroom 3-bathroom house with two small gardens in close vicinity of the Nuselský bridge on the D1 highway, yet completely shut off from the traffic and surrounded by a gated park and green areas. With nice views of the historic city, the property is located within walking distance of the Vltava river, the Folimanka park, the Vyšehrad Castle and Karlovo Náměstí Square. The home is set in a slope and laid out on three levels, with quality materials and modern design.

The main floor features an open plan area with lots of floor-to-ceiling French windows, a fully integrated open kitchen, living room, balcony, and a guest toilet. Upstairs is a gallery with a skylight, shower bathroom and toilet. The lower ground floor has two bedrooms, each with an en-suite bathroom, master bedroom also with a walk-in closet, and French doors to the garden.

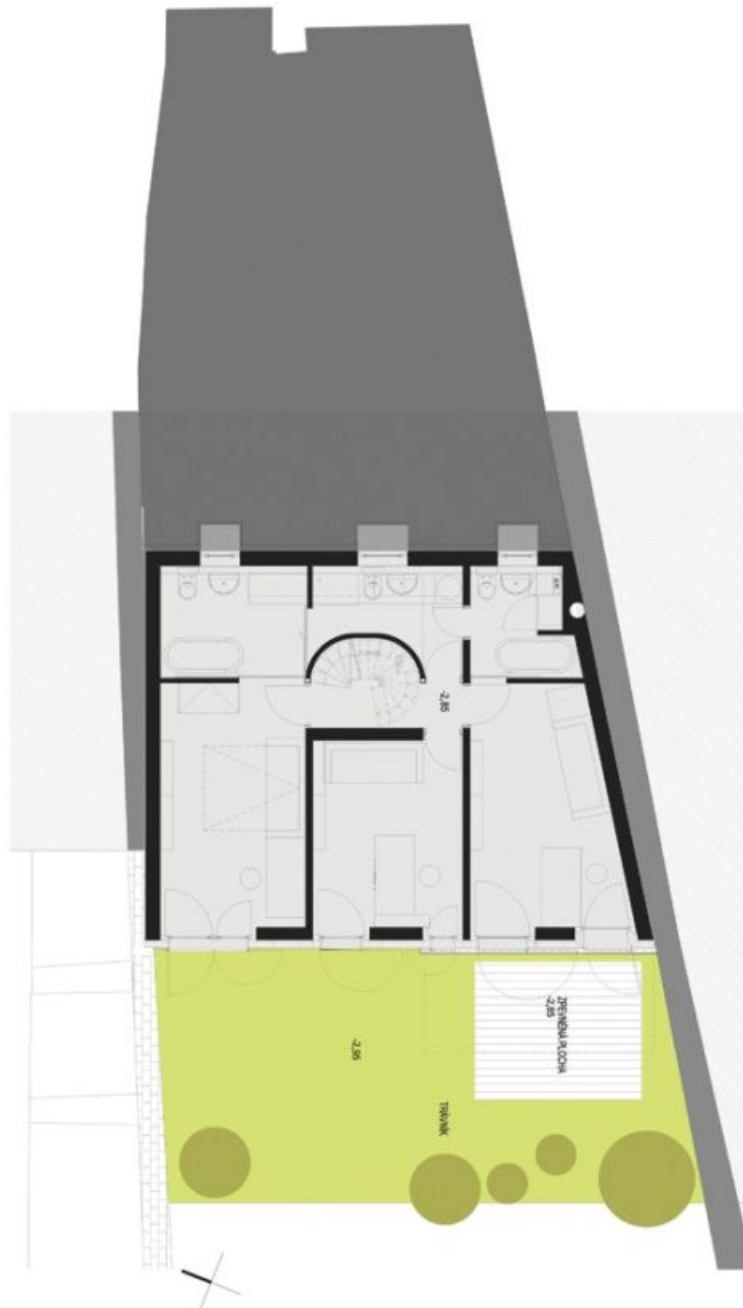
Front and back patio, attic storage, build-in wardrobe, circular staircase, parquet floors, blinds, washer, dishwasher, rainbow shower head, massage shower, bidet showers, TV, video entry phone, Internet, satellite possible. One outdoor parking space available. Within walking distance of I.P.Pavlova metro station. Utilities CZK 5000/month.



House Three-bedroom (4+kk)

150 m², Prague 2, Nové Město, Horská

Rented



House Three-bedroom (4+kk)

Rented

150 m², Prague 2, Nové Město, Horská



House Three-bedroom (4+kk)

Rented

150 m², Prague 2, Nové Město, Horská

