

House Five-bedroom (6+kk)

Rented

174 m², Praha-západ, Tuchoměřice, Na Výsluní



House Five-bedroom (6+kk)

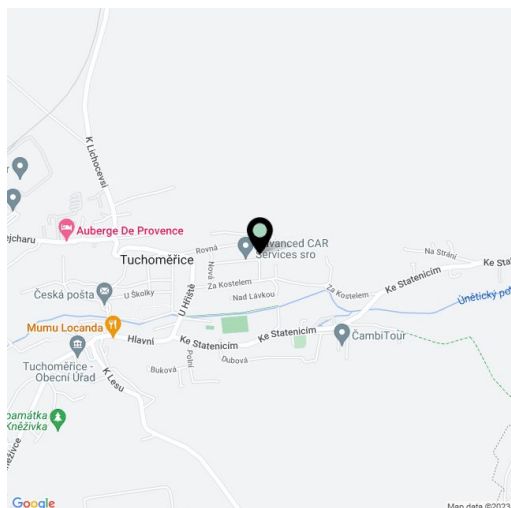
Rented174 m², Praha-západ, Tuchoměřice, Na Výsluní

Plot	481 m ²
Foot print	97 m ²
Garden	384 m ²
Parking	Parking on the plot.
Cellar	-
PENB	G
Reference number	6281
Available from	Immediately

Benefiting from an outdoor pool and a south facing landscaped garden, this fully furnished 5-bedroom 2-bathroom semidetached house is set in the peaceful natural area of Tuchoměřice. Location with regular bus connections to Bořislavka metro station, line A, and with quick connections to the airport and numerous Prague 6 international schools.

The ground floor offers a living room with a fully fitted open plan kitchen and access to a covered terrace and garden, a bedroom with an en-suite bathroom, a tiled guest bedroom, a utility room, a guest toilet, and an entrance hall. The upper floor includes a hall, three bedrooms, all with French windows, and a bathroom incl. a bathtub, a walk-in shower, and a toilet.

Attic storage, floating floors, tiles, built-in wardrobes, gas heating, underfloor heating on the ground floor and in the bathroom, washing machine, dishwasher, central vacuum cleaner. Two parking spaces on the plot are available. Utilities: approx. CZK 4000/month, garden maintenance is billed separately.

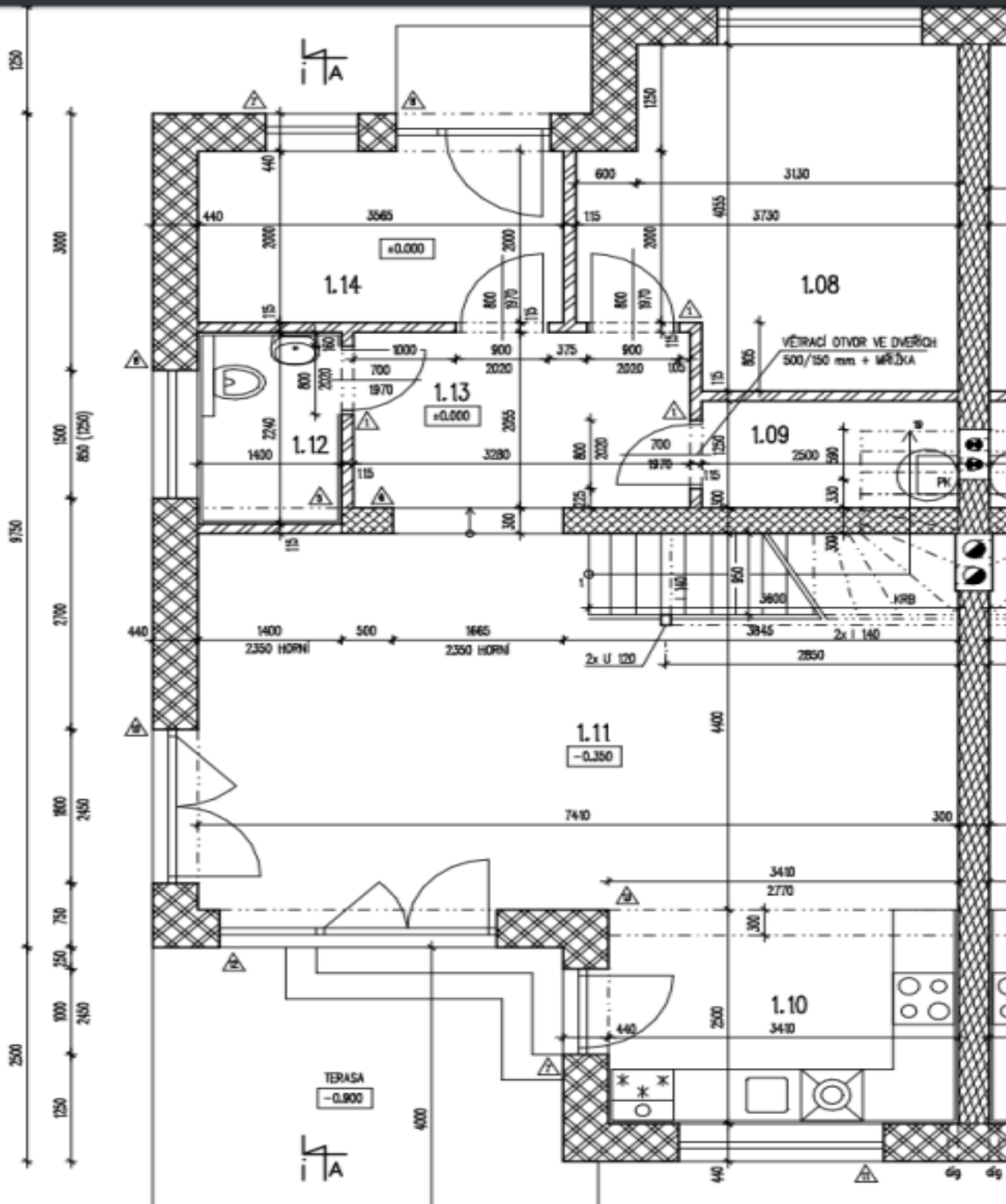


House Five-bedroom (6+kk)

Rented

174 m², Praha-západ, Tuchoměřice, Na Výsluní

RYŠ PŘÍZEMÍ (2).PDF



House Five-bedroom (6+kk)

Rented

174 m², Praha-západ, Tuchoměřice, Na Výsluní

