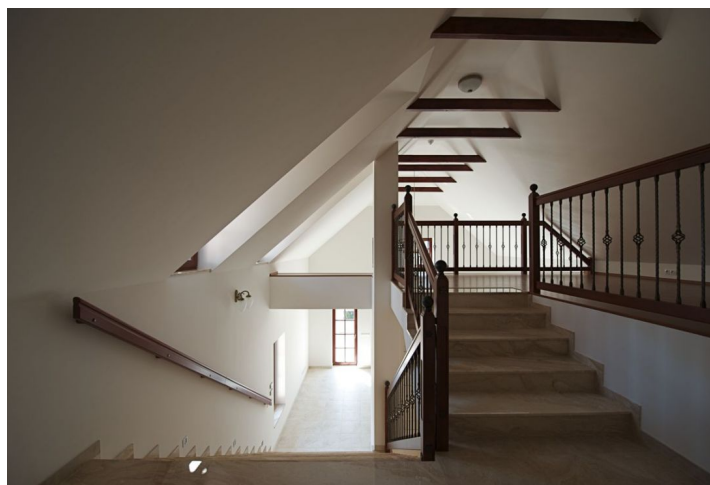
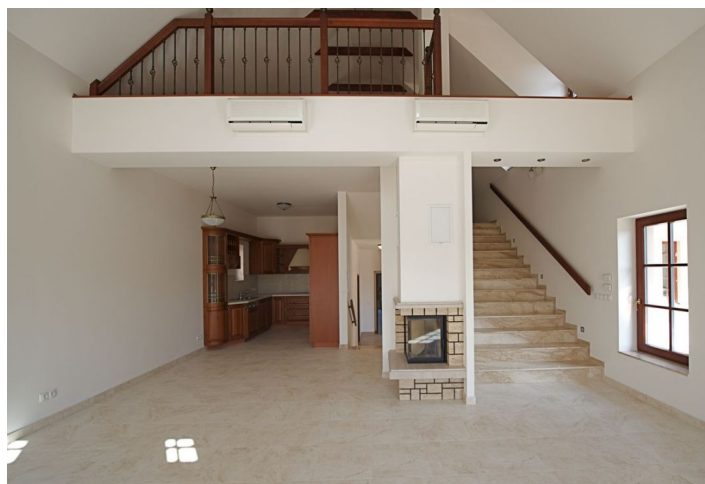
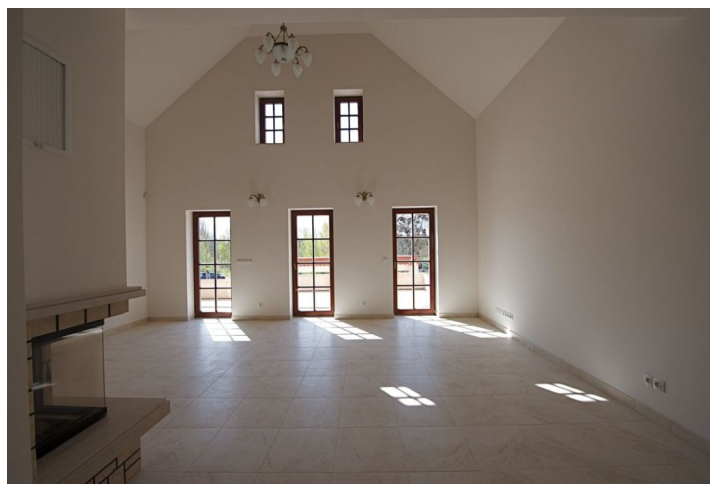


## Apartment Three-bedroom (4+kk)

Rented

195 m<sup>2</sup>, Prague 7, Troja, Povltavská



## Apartment Three-bedroom (4+kk)

Rented

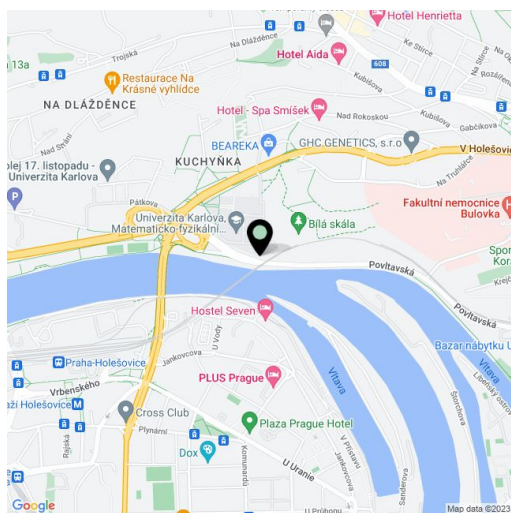
195 m<sup>2</sup>, Prague 7, Troja, Povltavská

Total area	195 m <sup>2</sup>
Parking	Two parking spaces included.
Garage	Yes
Cellar	Yes
PENB	G
Reference number	5747
Available from	Immediately

High quality multi-level 3-bedroom 3-bathroom flat with a terrace in a residence providing modern living standard for discriminating clients. Located in a pleasant green setting close to the Vltava embankment, the Prague ZOO and Botanical Garden, Trojský Chateau, and Stromovka, the largest park in Prague. The residence amenities include outdoor heated pool, underground parking, top quality materials, finishes and technical equipment incl. programmable floor heating system (heated floors throughout), spacious basement storage units, and a lift.

The apartment has its own entrance, large living room with fully fitted kitchen and access to terrace with a view of the Prague Castle, and gallery suitable for a study or relaxation area. The apartment includes a separate atelier unit with its own entrance and a bathroom suitable for an office, guest suite etc.

Air-conditioning, alarm, Internet and satellite connection, telephone and data points, fireplace, security door, wood floors in bedrooms, marble and tiles, built-in wardrobes, individual energy metering. Bus and tram connections to the city center, essential amenities, schools, sports facilities. Convenient to the Czech-German school (Thomas Man Gymnasium). Common building charges CZK 5,000/month. Deposti for utilities CZK 8,000/month. Available from September 2019.

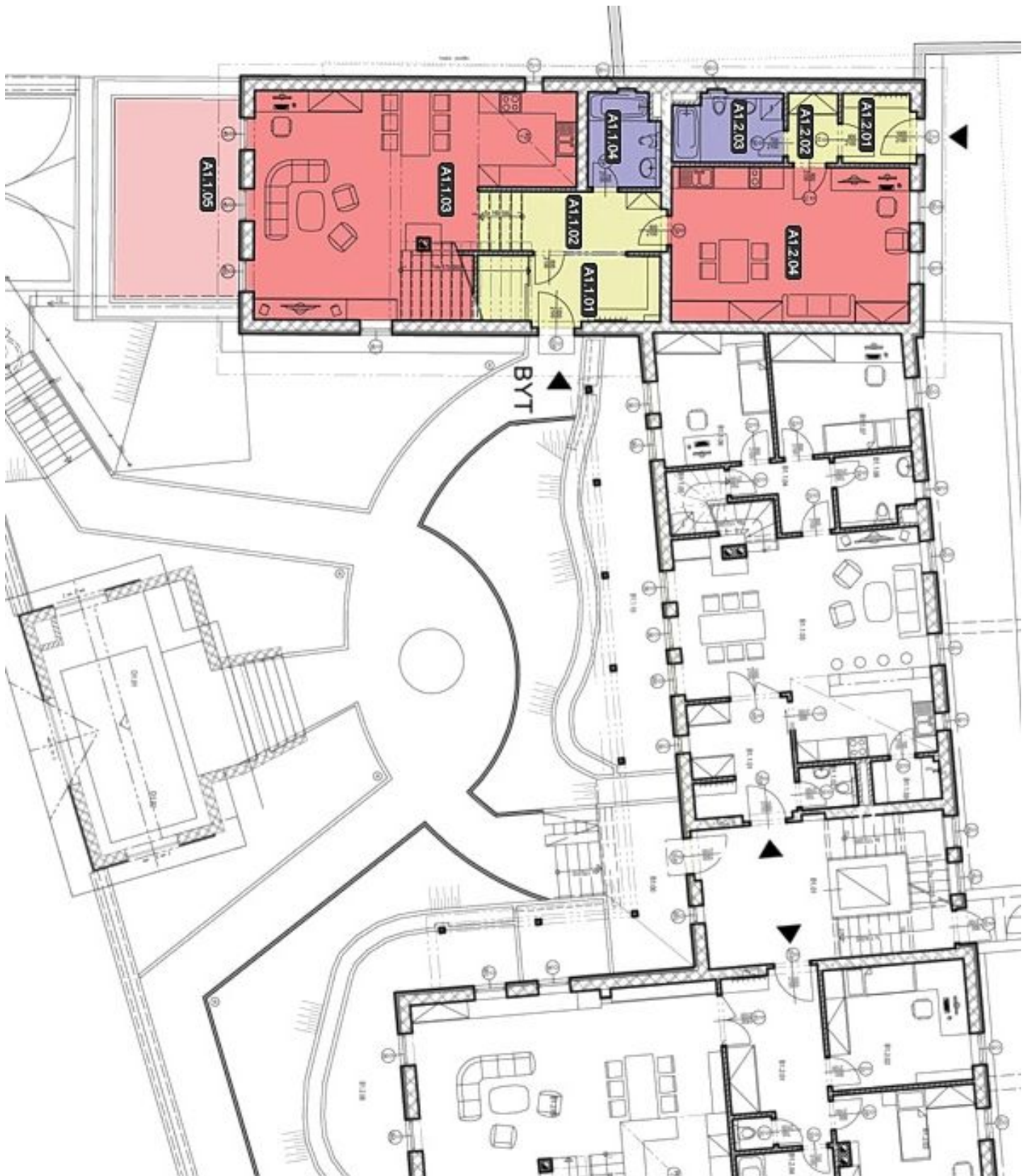


\* Area of the unit according to the Civil Code. The area consists of the sum total area of the entire unit bounded by perimeter walls.

## Apartment Three-bedroom (4+kk)

Rented

195 m<sup>2</sup>, Prague 7, Troja, Povltavská



## Apartment Three-bedroom (4+kk)

Rented

195 m<sup>2</sup>, Prague 7, Troja, Povltavská

