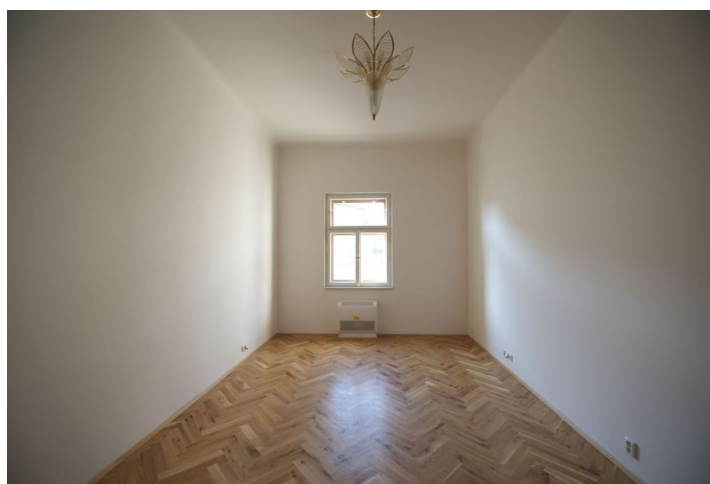


Apartment Two-bedroom (3+kk)

Rented

72 m², Prague 1, Staré Město, Maiselova



Apartment Two-bedroom (3+kk)

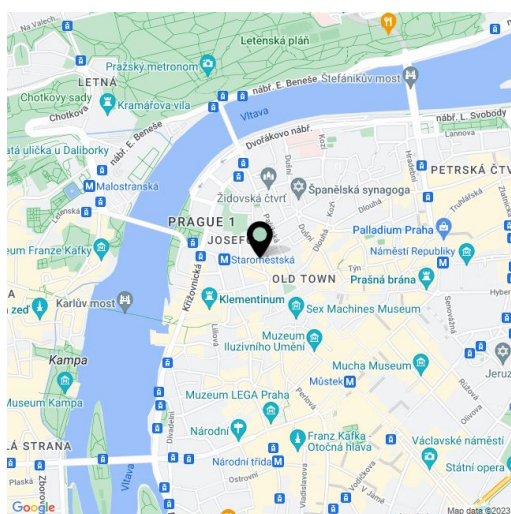
Rented72 m², Prague 1, Staré Město, Maiselova

Total area	72 m ²
Parking	-
Cellar	-
PENB	G
Reference number	5103
Available from	Immediately

Newly reconstructed 2-bedroom flat on the 4th floor in an historic building with lift and preserved original features. Located in the very center of Prague, steps from Old Town Square and the prestigious Pařížská street, with fine restaurants, boutiques and cultural venues all around.

There is entry hall with fully fitted kitchen situated in the back part, living room, courtyard oriented bedrooms, bathroom with bath tub and toilet, and an extra toilet.

Parquet and tile floors, security door, high ceilings, dishwasher, microwave, heating with cooling option, Internet and satellite connection, video entry phone. Staroměstská metro and trams minutes away. Common building charges CZK 3000 per month (plus VAT). Utilities CZK 3500 per month (plus VAT).



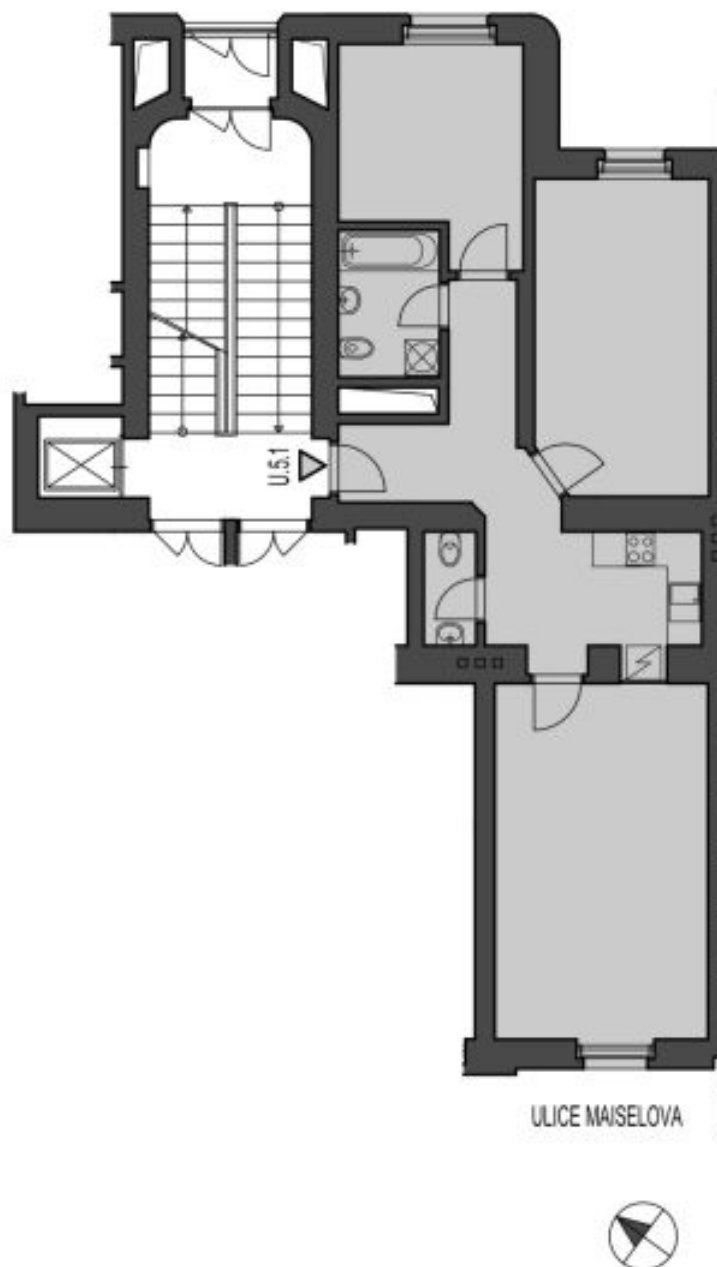
* Area of the unit according to the Civil Code. The area consists of the sum total area of the entire unit bounded by perimeter walls.

Apartment Two-bedroom (3+kk)

72 m², Prague 1, Staré Město, Maiselova

Rented

5.NP
plocha bytu - 72 m²



Apartment Two-bedroom (3+kk)

Rented

72 m², Prague 1, Staré Město, Maiselova

TABULKA MÍSTNOSTÍ - 5.NP			
číslo místnosti	ÚČEL MÍSTNOSTI	plocha (m ²) vnitřní	plocha (m ²) vnější
	BYT U.5.1 3+KK	celkem	71,55
U.5.1.11	PŘEDSÍŇ + CHODBA	12,37	
U.5.1.12	KOUPELNA +WC	4,39	
U.5.1.13	POKOJ	10,78	
U.5.1.14	POKOJ	16,11	
U.5.1.15	KUCH. KOUT	3,79	
U.5.1.16	OBÝVACÍ POKOJ	22,35	
U.5.1.17	WC	1,76	
	BYT U.5.2 2+KK	celkem	56,55
U.5.2.21	PŘEDSÍŇ	3,70	
U.5.2.22	WC	1,76	
U.5.2.23	OBÝVACÍ POKOJ + KUCH. KOUT	25,85	
U.5.2.24	POKOJ	20,86	
U.5.2.25	KOUPELNA	4,38	
	BYT U.5.3 3+KK	celkem	75,11
U.5.3.31	PŘEDSÍŇ	12,48	
U.5.3.32	OBÝVACÍ POKOJ	22,35	
U.5.3.33	KUCH. KOUT	3,97	
U.5.3.34	KOUPELNA	4,76	
U.5.3.35	POKOJ	11,50	
U.5.3.36	POKOJ	12,95	
U.5.3.37	WC	2,00	
U.5.3.38	CHODBA	5,10	