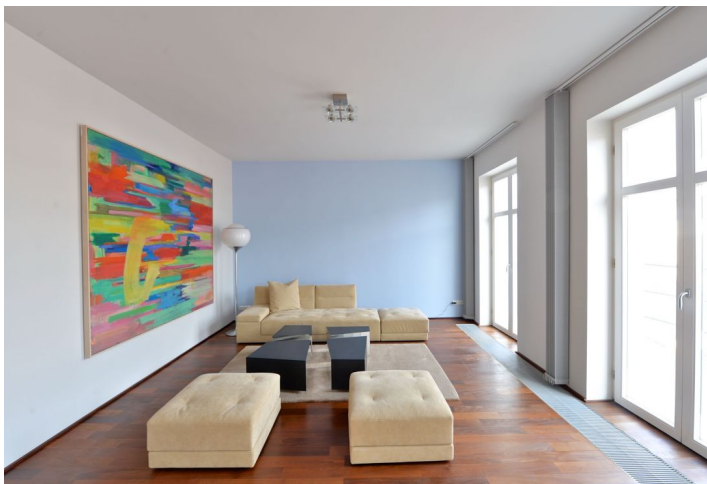


## Apartment Two-bedroom (3+1)

Rented

154 m<sup>2</sup>, Prague 1, Nové Město, Truhlářská



## Apartment Two-bedroom (3+1)

Rented

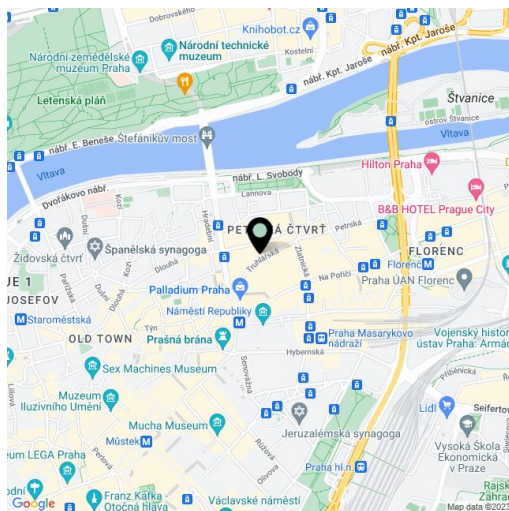
154 m<sup>2</sup>, Prague 1, Nové Město, Truhlářská

Total area	189 m <sup>2</sup>
Floor area*	154 m <sup>2</sup>
Terrace	35 m <sup>2</sup>
Parking	-
Cellar	-
PENB	D
Reference number	5055
Available from	Immediately

High quality, fully furnished 2-bedroom 2-bathroom split-level flat with 2 terraces (total of 35 m<sup>2</sup>) on the fifth and sixth floors of a classic late 19th century building, superbly renovated with attention to detail and retrofitted with a lift. Offering a most modern living standard, high quality finishings and a lively central location, the flat is located on a quiet street just steps from Náměstí Republiky Square with the Palladium shopping mall, tram stops and metro station nearby, within walking distance of Old Town Square as well as Wenceslas Square.

The lower level features a living room with terrace access, a fully fitted eat-in kitchen, toilet, and storage / utility room. The upper level includes a gallery with terrace access, two separate bedrooms, one with an en-suite bathroom, plus a family bathroom also with terrace access.

Nice views of the surroundings and Letná, air-conditioning, wood floors, luxury bathrooms, security entry door. Fully furnished kitchen with all appliances, dishwasher, fridge, freezer, stove, oven, toaster, kettle and Nespresso machine, satellite, Internet, washing machine. Common building charges and utilities CZK 9,000/month for two persons. Available from April 2019.



\* Area of the unit according to the Civil Code. The area consists of the sum total area of the entire unit bounded by perimeter walls.