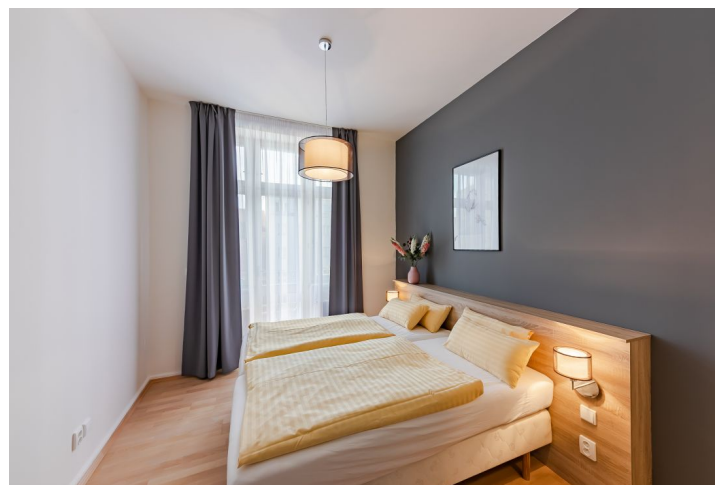


Apartment Two-bedroom (3+kk)

Rented

92 m², Prague 2, Vinohrady, Belgická



Apartment Two-bedroom (3+kk)

Rented

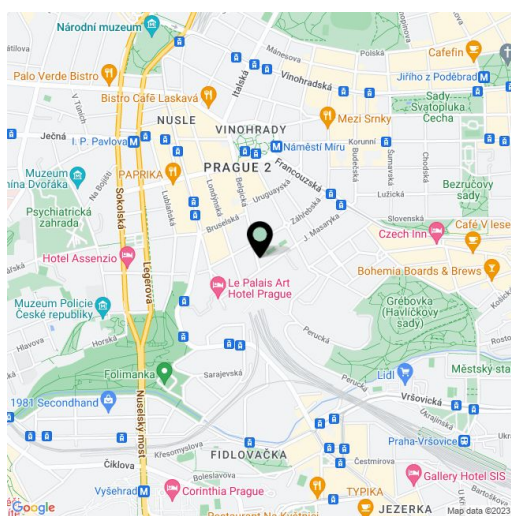
92 m², Prague 2, Vinohrady, Belgická

Total area	92 m ²
Parking	Parking available at 2.000 CZK/month + VAT.
Cellar	-
PENB	G
Reference number	5006
Available from	Immediately

Fully furnished 2-bedroom 2-bathroom flat with 2 balconies situated on the 3rd floor with a lift, in a renovated traditional building. Located on a quiet tree lined street in an attractive residential area of Prague 2 - Vinohrady, just a minute walk from Náměstí Míru metro station and tram stops. Highly sought after location within easy reach of the city center and with full amenities nearby, within walking distance of Gröbovka and Folimanka Parks.

Fully fitted and equipped kitchen open to living room, 2 walk-in closets, built-in wardrobe, en-suite bathrooms, one also accessible from hall, utility room.

High ceilings, parquet and laminated floors, recessed lighting, washer/dryer, dishwasher, telephone, flat screen TV, Internet and satellite connections, security bar on entry door. Garage parking can be arranged at CZK 2000/month + VAT. Common building charges (CZK 3,000/month fixed fee) and deposit for utilities (CZK 2,000/month) are billed separately.



* Area of the unit according to the Civil Code. The area consists of the sum total area of the entire unit bounded by perimeter walls.