

Apartment Two-bedroom (3+kk)

Rented

140 m², Prague 1, Josefov, Pařížská



Apartment Two-bedroom (3+kk)

Rented

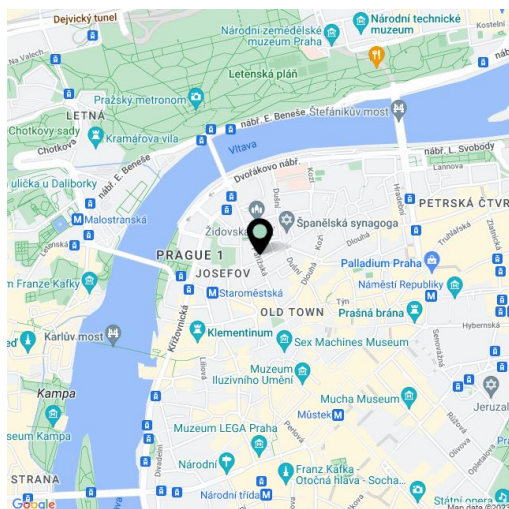
140 m², Prague 1, Josefov, Pařížská

Total area	148 m ²
Floor area*	140 m ²
Balcony	8 m ²
Parking	-
Cellar	-
Service price	Common building charges and Internet CZK 8,000/month. Utilities are paid separately.
PENB	Not required
Reference number	4709
Available from	Immediately

This high-end designer apartment in a prestigious historic location is situated on the 4th floor of a building with a daytime reception and an elevator, listed in the national heritage register. This fully refurbished and furnished apartment with 2 balconies is in one of the most beautiful buildings on one of the most desirable residential streets in Prague, mere steps from Old Town Square and the Vltava embankment.

Boasting a stylish interior by the renowned Donlic studio, the apartment has 2 balconies, a master bedroom with an en-suite bathroom and a walk-in closet, a second bedroom, a fully fitted open plan kitchen with Miele appliances, a living room, a dining area, plenty of built-in storage space, and a laundry and utility room.

Tasteful mix of modern and preserved original details, air-condition, hardwood parquet floors, interior doors with etched glass panels, security entry door, bathroom underfloor heating, washer, dryer, satellite reception, alarm, elevator.

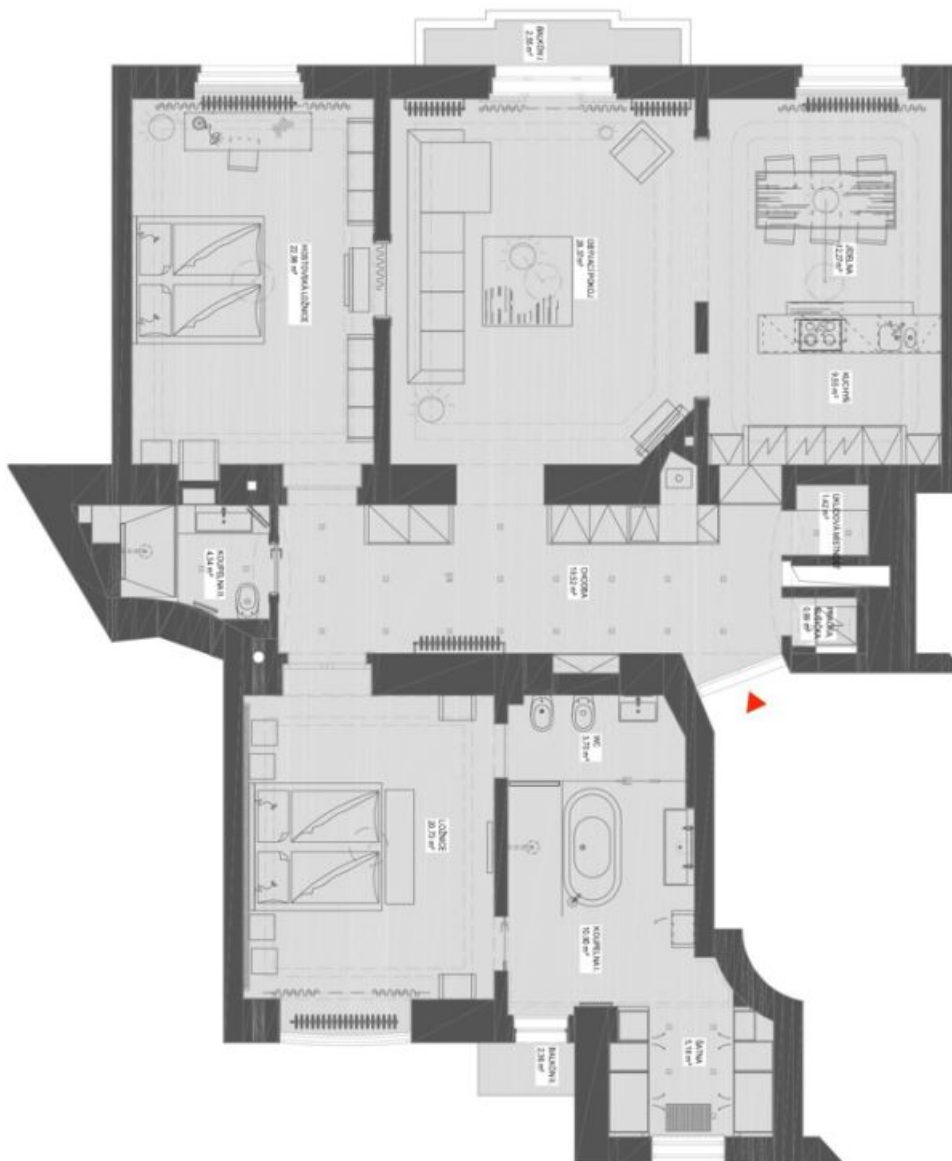


* Area of the unit according to the Civil Code. The area consists of the sum total area of the entire unit bounded by perimeter walls.

Apartment Two-bedroom (3+kk)

Rented

140 m², Prague 1, Josefov, Pařížská



4. NADZEMNÍ PODLAŽÍ

Celková plocha bytu 139,95 m²

- 1 Kuchyně
- 1 Obývací pokoj
- 1 Jidelna
- 2 Ložnice
- 2 Koupelna
- 2 WC
- 1 Šatna
- 1 Chodba
- 2 Balkón (4,91 m²)