

## Apartment Two-bedroom (3+kk)

Rented

95 m<sup>2</sup>, Prague 5, Smíchov, Karla Engliše



# Apartment Two-bedroom (3+kk)

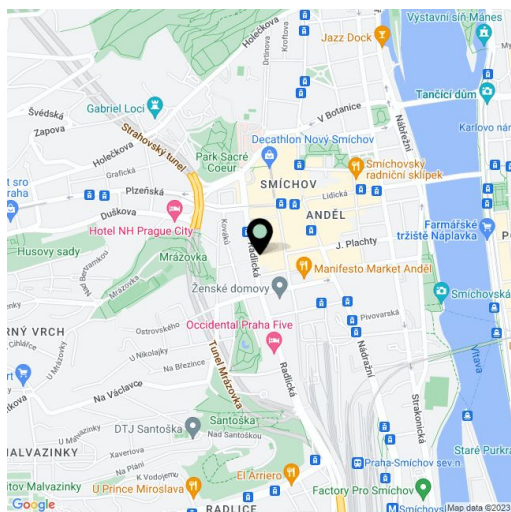
**Rented**95 m<sup>2</sup>, Prague 5, Smíchov, Karla Engliše

Total area	95 m <sup>2</sup>
Parking	-
Cellar	-
Service price	Deposit for services CZK 1,500 per person and month. Deposit for gas and electricity - transferred to the tenant.
PENB	G
Reference number	465
Available from	Immediately

Partly furnished attic apartment on the 6th floor of a building with an elevator in Prague 5 - Smíchov, close to a large commercial complex with a wide range of shopping opportunities and rich sports and cultural activities. The building is located in an area with excellent transport accessibility - the Anděl metro station and tram and bus stops are a few minutes walk from the building, and the French Lyceum is also within easy reach.

The unit has two bedrooms, a living room with a fully fitted open plan kitchen and dining area, a bathroom with a bathtub and walk-in shower, a toilet with a utility area, and an entry hall.

Hardwood parquet floors, security entry door, built-in wardrobes, vertical windows, gas boiler, washing machine, dishwasher.



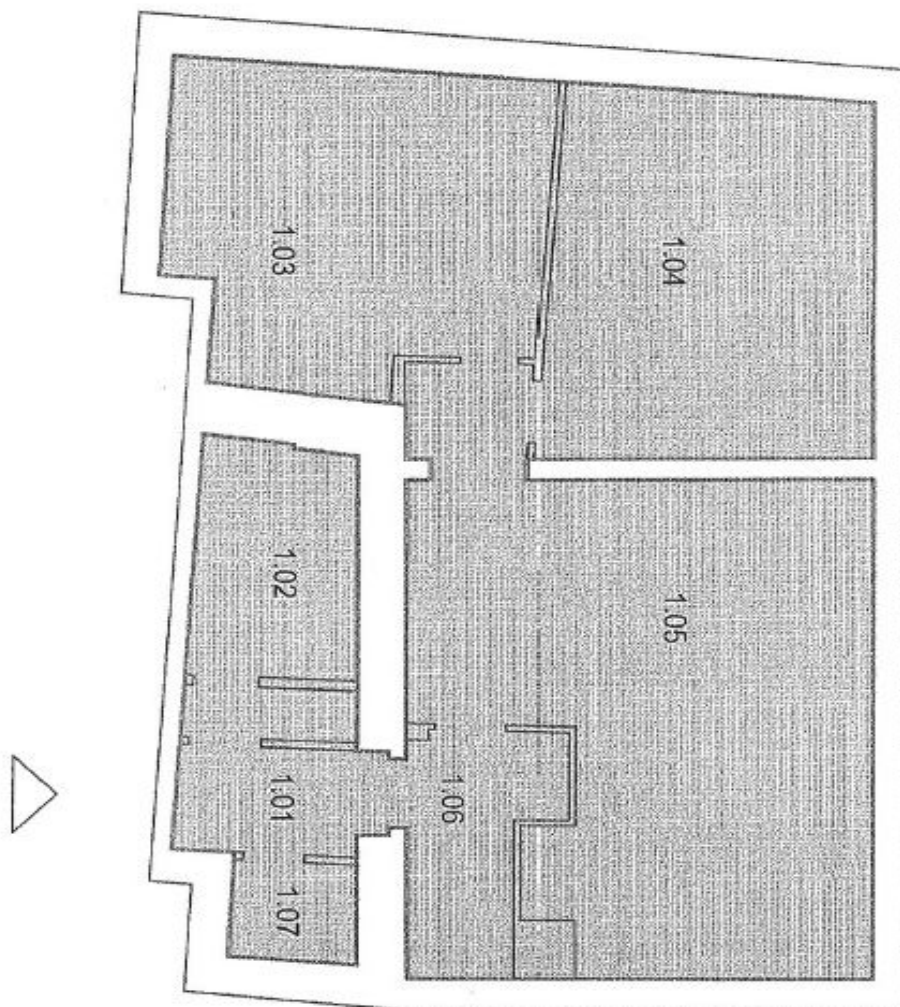
\* Size of the unit according to the Housing Act.

The area consists of the sum total of the internal area of every room.

## Apartment Two-bedroom (3+kk)

Rented

95 m<sup>2</sup>, Prague 5, Smíchov, Karla Engliše



1.01. VSTUPNÍ MÍSTNOST  
1.01. KOUPELNA  
1.03. LOŽNICE  
1.04. LOŽNICE  
1.05. OBIVACÍ POKOJ s KUCH.  
1.06. CHODBA  
1.07. WC