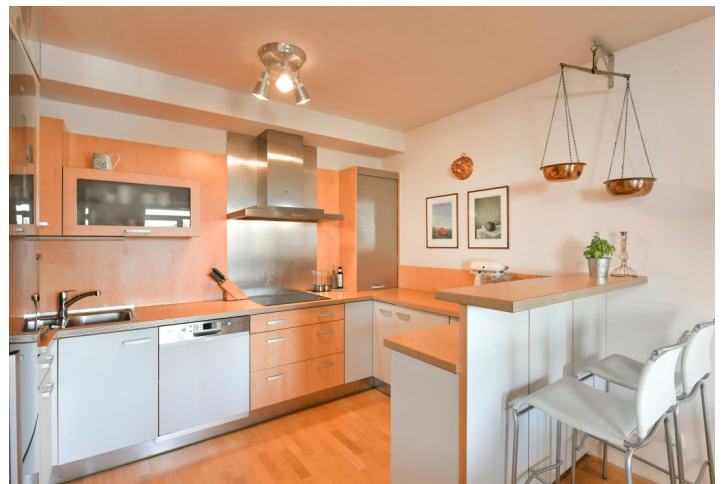


Apartment Two-bedroom (3+kk)

Rented

94 m², Prague 9, Vysočany, Nepilova



Apartment Two-bedroom (3+kk)

Rented

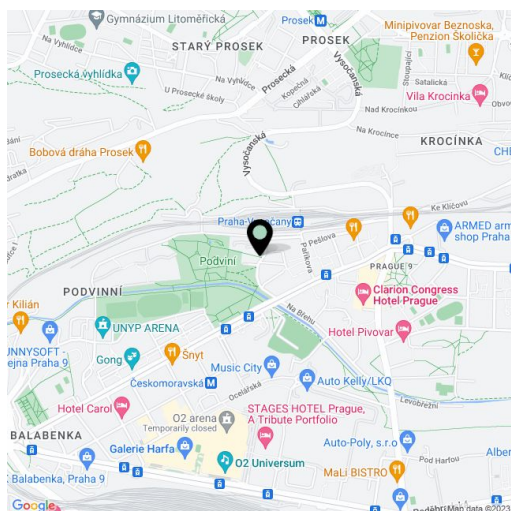
94 m², Prague 9, Vysočany, Nepilova

Total area	105 m ²
Floor area*	94 m ²
Balcony	11 m ²
Parking	Garage parking.
Garage	Yes
Cellar	-
Service price	Common building charges: CZK 8,000/mo. Electricity is billed separately.
PENB	C
Reference number	44170
Available from	Immediately

This furnished 2-bedroom apartment with 2 balconies and green views is on the third floor of a modern residential building with a 24/7 reception, camera system, and underground parking in Vysočany, Prague 9. Located in close vicinity of the English College in Prague, near Podvíní Park, in an area with full amenities and quick connections to the city center just moments from the Vysočanská metro station and tram stop, within walking distance of the Fenix shopping mall.

The west-facing apartment includes a living room with a fully fitted open plan kitchen and balcony, a bedroom with a fitted walk-in closet, a bedroom with a large built-in wardrobe, a shared balcony, a bathroom (bathtub, walk-in shower, toilet), a fitted walk-in closet, a separate toilet, and an entrance hall.

Hardwood floors, tiles, central heating, washer, dryer, dishwasher, induction cooktop, chip entry to the building, elevator. A lockable garage unit is included. Available from January 16th, 2023.



* Area of the unit according to the Civil Code. The area consists of the sum total area of the entire unit bounded by perimeter walls.