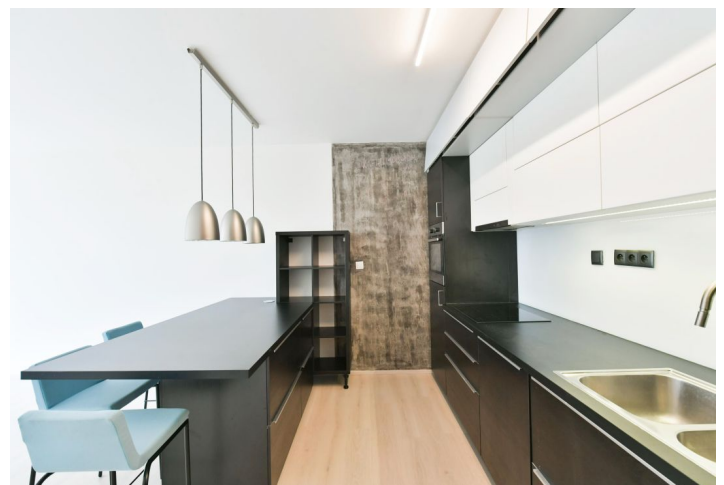


## Apartment One-bedroom (2+kk)

Rented

52 m<sup>2</sup>, Prague 4, Braník, Na Výspě



## Apartment One-bedroom (2+kk)

Rented

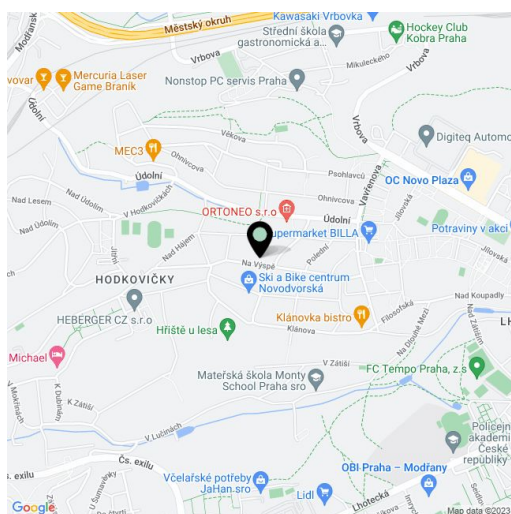
52 m<sup>2</sup>, Prague 4, Braník, Na Výspě

Total area	56 m <sup>2</sup>
Floor area*	52 m <sup>2</sup>
Balcony	4 m <sup>2</sup>
Parking	Garage parking.
Garage	Yes
Cellar	Yes
Service price	Monthly deposit for services, water, heating, and garage maintenance: CZK 4,600. Electricity is billed separately.
PENB	B
Reference number	44168
Available from	Immediately

Boasting a balcony, this contemporary semi-furnished apartment is on the 1st floor of a modern building with underground parking. Located in a quiet residential part of Braník, Prague 4, a 5 min. walk from the Hodkovičky forest park, near a bus stops with links to the Kačerov and Budějovická metro stations (line C), and a short drive from the Prague British School. Local amenities include the Novo Plaza shopping mall, a supermarket, schools, a kindergarten, playgrounds, a football club, tennis courts, a bike path, and a winter stadium.

The interior features a living room with a fully fitted open plan kitchen and balcony facing the courtyard, a bedroom facing the courtyard, a bathroom with a bathtub and toilet, and an entrance hall with a large built-in wardrobe.

Laminate floors, tiles, security entry door, washing machine, dishwasher, induction cooktop, video entry phone, cellar. A garage parking space is included.



\* Size of the unit according to the Housing Act.

The area consists of the sum total of the internal area of every room.