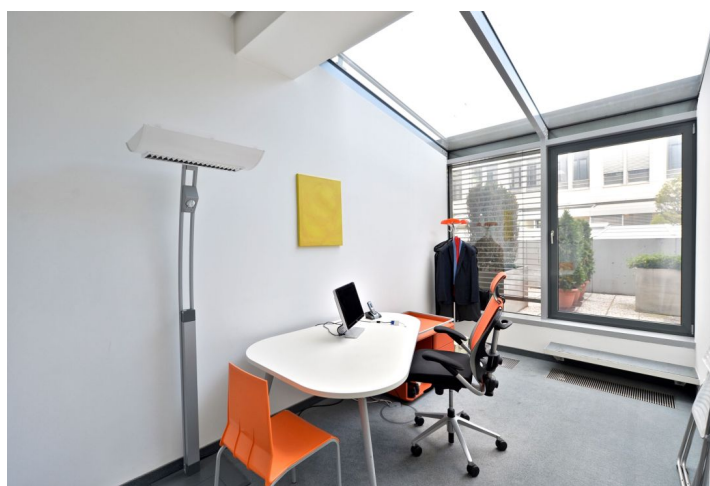
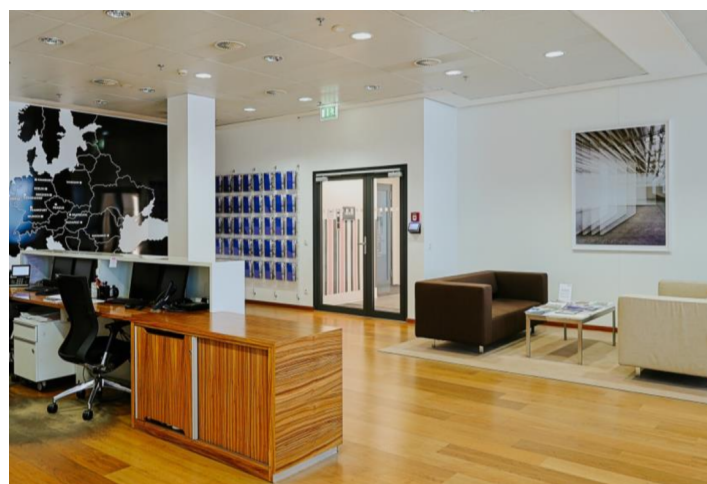
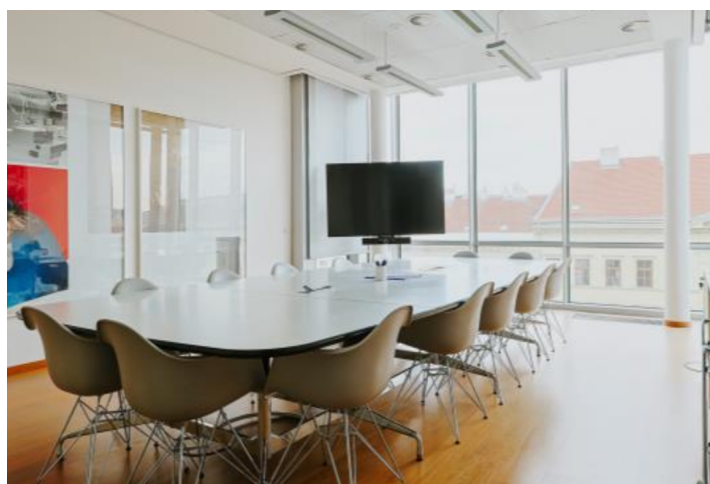


## Office space

Rented

Prague 1, Nové Město, Na Poříčí



## Office space

Rented

Prague 1, Nové Město, Na Poříčí

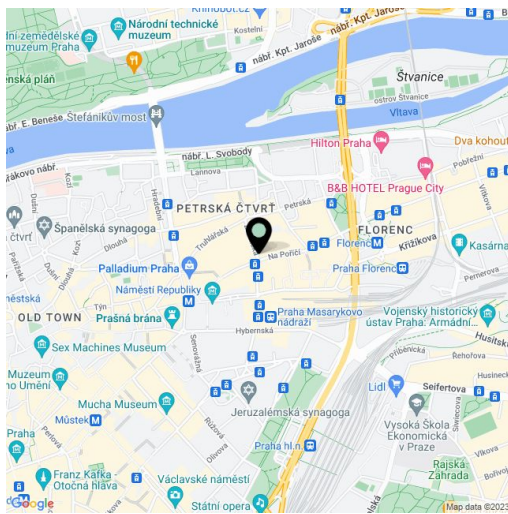
<b>Service price</b>	174 CZK monthly per m <sup>2</sup>
<b>Available area</b>	697 m <sup>2</sup>
<b>Cellar</b>	-
<b>Terrace</b>	72 m <sup>2</sup>
<b>Parking</b>	Yes
<b>PENB</b>	G
<b>Reference number</b>	44136

Office space for sublease until August 2027 on the 4th floor + terrace in a modern office building. Building has received several prestigious awards - CEE Building of the Year 2007, Best of Realty 2007. Five-storey building with typical floor space 8 300 sq. m. The space has a terrace of 72 sq. m.

**Features and Services:**

- 24-hour reception areas
- Raised floors
- Suspended ceilings with a 3m high of lit area
- Air conditioning
- Openable windows
- Automatic shading technology
- Sprinklers
- High-quality carpeting
- Modern telecommunications technology
- Fiber optic cabel network
- Sufficient number of electric floor boxes
- UPS and security system
- Terrace

Rental and service charges listed without VAT. Lessee pays no commission.



## Office space

Rented

Prague 1, Nové Město, Na Poříčí

