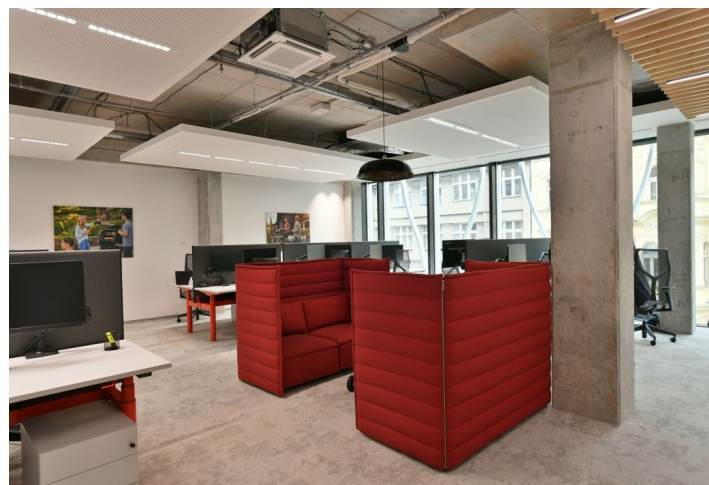
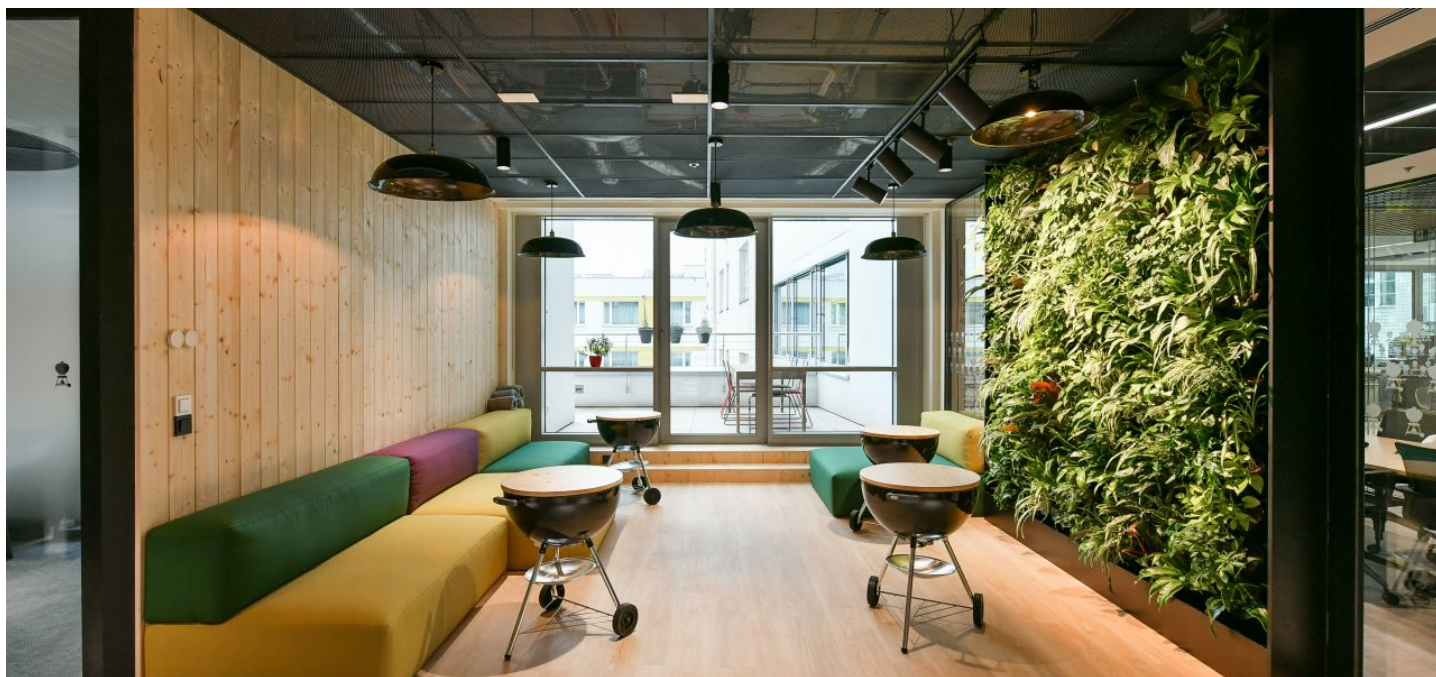


Office space

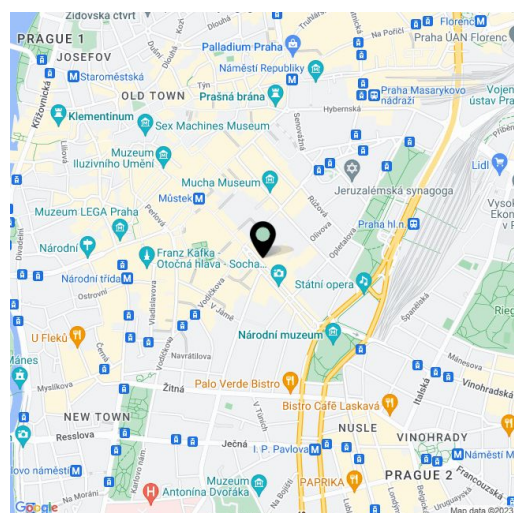
Rented

Prague 1, Nové Město, Václavské náměstí



Prague 1, Nové Město, Václavské náměstí

Service price	95 CZK monthly per m ²
Available area	1 140 m ²
Cellar	-
Terrace	107 m ²
Parking	EUR 350 / pp / month
PENB	Not required
Reference number	43952



This unique administrative and business complex situated on the corner of Václavské náměstí Square and Opletalova Street offers approx. 15,000 sq. m. of office space for lease, 7,000 sq. m. of commercial space for lease, and a sufficient number of parking spaces. The building by reputed Chapman Taylor architects is "design inclusive and accessible" and combines a 21st century design with the latest advances in technology. The result is a healthy and pleasant environment.

The building's facilities include centrally controlled external blinds and openable windows, which help create an optimal environment and let in plenty of natural light. The double facade reduces noise and collects solar heat gains in the summer. Tenants will save on their utilities thanks to the building's passive standards that reduce energy consumption. The project is planning on achieving BREEAM EXCELLENT certification.

The space can be divided into 292 sq. m, 366 sq. m and 658 sq. m.

Location:

A premium business address in Prague. The building is easily accessible by public transport; it is near the Muzeum metro station (lines A and C), the Můstek metro station (lines A and B), the Prague Main Railway Station, and the tram stops on Vodičkova or Jindřišská street.

Facilities and Services:

- Elegant central reception with a ceiling height of 8 m
- 24/7 security
- Parking in underground garages
- Electric car charging stations
- Bike storage
- Dressing rooms and showers
- Lower energy consumption and CO2 emissions
- BREEAM EXCELLENT certification
- Quality triple-glazed panes the decrease interior heat gains in summer and heat losses in winter
- An abundance of natural light
- Intelligent exterior blinds
- Efficient elevators with energy recovery and a destination control system
- Intelligent energy efficient LED lighting
- Zone temperature control system
- Complex system of regulation
- Double floors
- Interior fan coil units
- Possibility to install up to 7 kitchenettes and sanitary facilities on each floor
- Waste recycling

Office space

Rented

Prague 1, Nové Město, Václavské náměstí

Service price	95 CZK monthly per m ²
Available area	1 140 m ²
Cellar	-
Terrace	107 m ²
Parking	EUR 350 / pp / month
PENB	Not required
Reference number	43952

VRV system of heat pumps with the possibility of individual consumption measurement

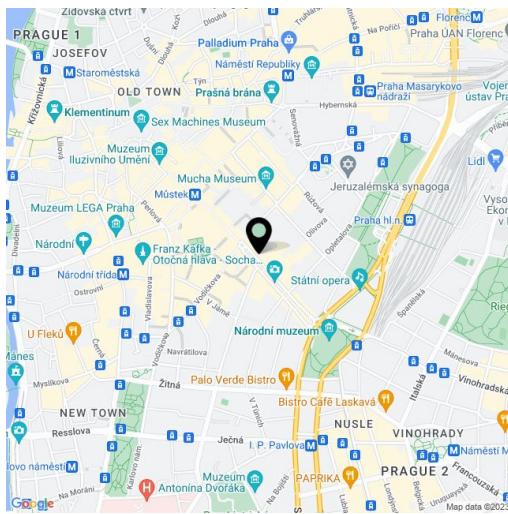
Central fresh air ventilation system on each floor

Camera system

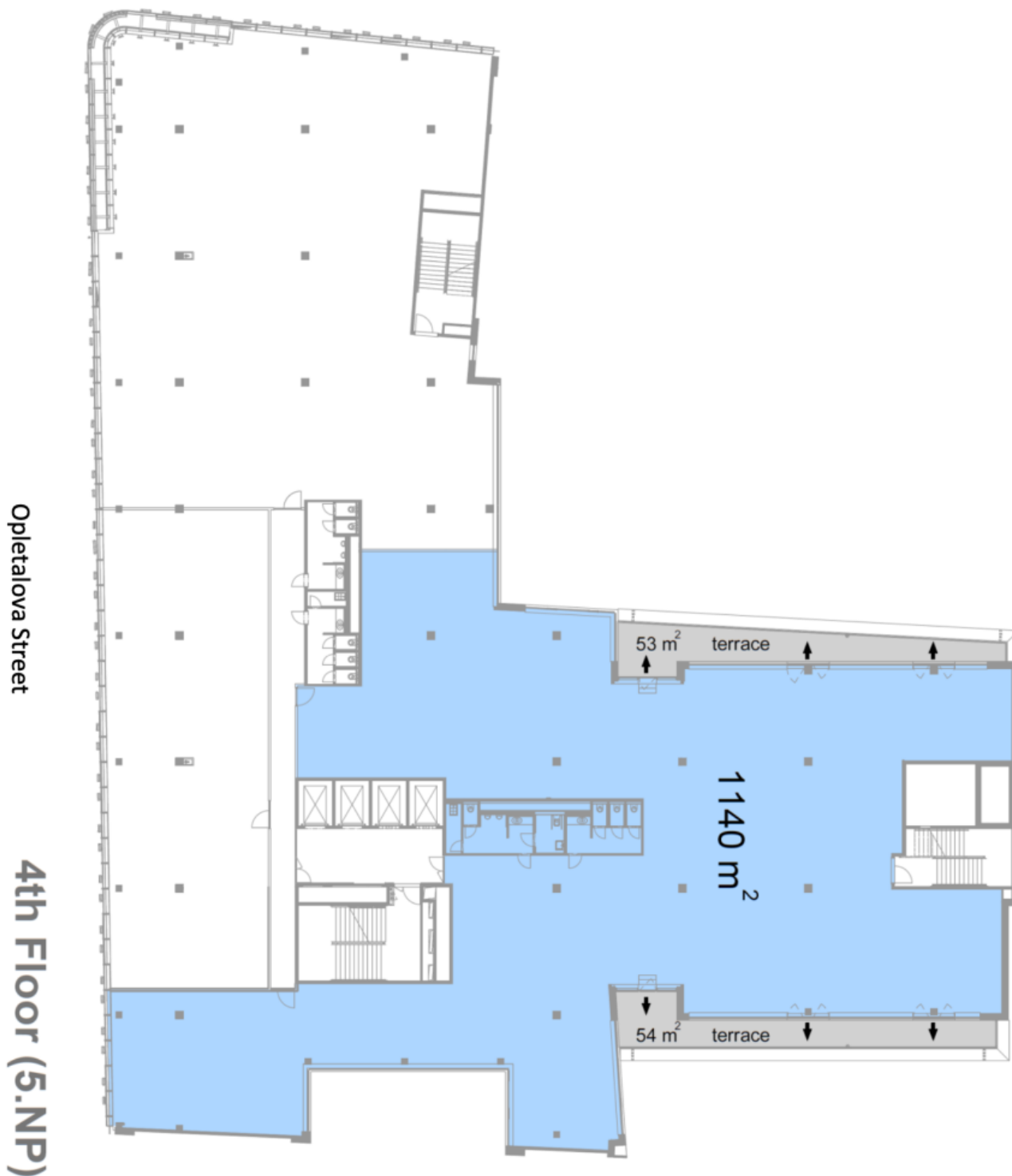
Intelligent building access system

Entrance turnstiles by the reception connected to an access system

Rental and service charges are listed without VAT. Lessee pays no commission.



Plan of the premises





UNIT 1
292 sqm
54 sqm terrace

UNIT 2
366 sqm

Opletalova Street

Plan of the existing fitout

