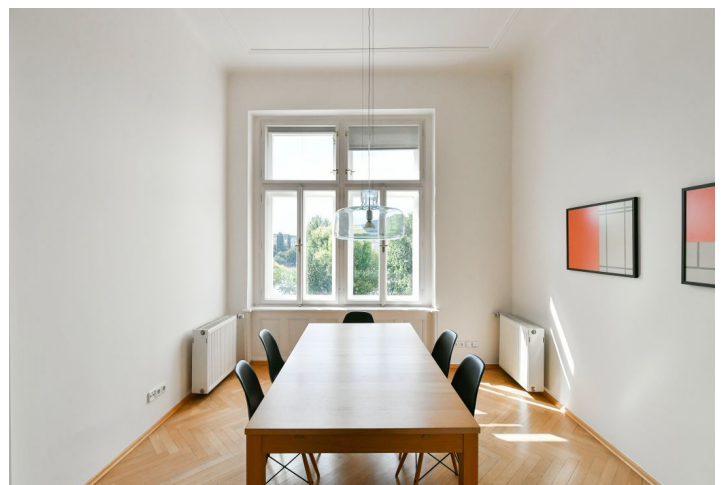


## Apartment One-bedroom (2+1)

Rented

80 m<sup>2</sup>, Prague 1, Nové Město, Masarykovo nábřeží



## Apartment One-bedroom (2+1)

Rented

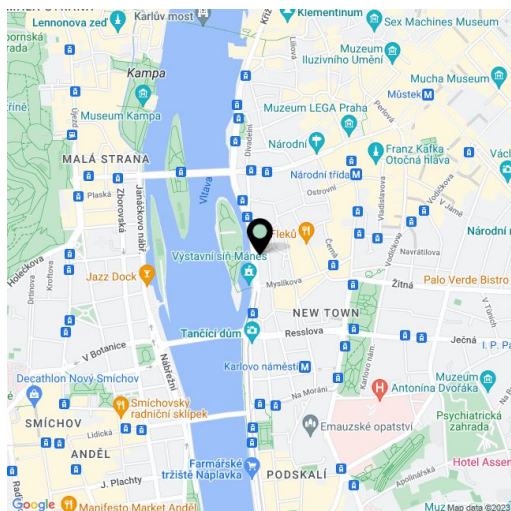
80 m<sup>2</sup>, Prague 1, Nové Město, Masarykovo nábřeží

Total area	80 m <sup>2</sup>
Parking	-
Cellar	Yes
PENB	G
Reference number	43699
Available from	Immediately

Boasting a beautiful riverfront location and views of the Vltava River, Žofín Hall, Petřín Hill, and the National Theater, this refurbished and furnished 1-bedroom apartment with preserved original details is situated on the third floor of a renovated Art Nouveau building. Set in an attractive central location in close vicinity of the National Theater, only a short walk from Old Town and Wenceslas squares. A location with very good transportation connections (trams are a few steps away, the metro is within walking distance) and full amenities and services in the area.

The interior features a living room with an original tiled stove, a fully fitted kitchen, a bedroom facing a quiet courtyard, a bathroom with a bathtub, a storage room, a separate toilet, and an entrance hall with built-in wardrobes.

**Hardwood floors**, tiles, stucco ceilings, gas boiler, washing machine, dishwasher, induction cooktop, microwave oven, TV, **cellar**, bike storage room in the building. Monthly deposit for service charges and water: CZK 2,000. Gas and electricity will be transferred to the tenant.



\* Area of the unit according to the Civil Code. The area consists of the sum total area of the entire unit bounded by perimeter walls.