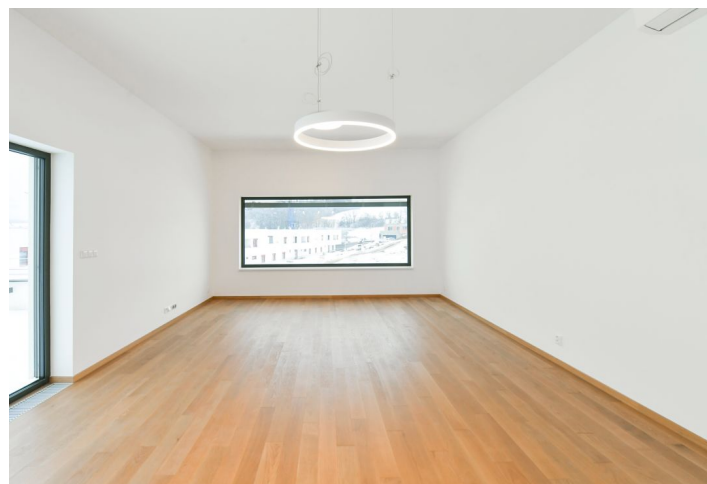


## House Five-bedroom (6+kk)

Rented

346 m<sup>2</sup>, Prague 6, Lysolaje, U Libosadu



## House Five-bedroom (6+kk)

Rented

346 m², Prague 6, Lysolaje, U Libosadu

Total area	346 m²
Plot	607 m²
Foot print	284 m²
Garden	323 m²
Floor area	277 m²
Terrace	69 m²
Parking	Garage for 2-3 cars.
Garage	Yes
Cellar	-
Service price	Monthly deposit for water and garbage disposal: CZK 3,000. Gas and electricity are billed separately.
PENB	B
Reference number	43634
Available from	01.10.2025

This brand new 5-bedroom 3-bathroom freestanding house with a large garden, part of the Zátíší Lysolaje residential project, is set in a green residential area in close vicinity of the Housle nature preserve and the Šárecké Valley. A location with regular bus links to the Dejvická and Bořislavka metro stations (about ten min.), just moments from ČZU (Czech University of Life Sciences) University campus and sports grounds, a few min. drive to Tiché údolí protected area. Conveniently located for the airport and the ISP and Riverside School international schools.

The ground floor includes a guest bedroom, a bathroom with a walk-in shower and a toilet, a large storage room, and an entrance hall with a built-in wardrobe and garage access. The upper floor features a spacious living room with a fully fitted open plan kitchen and a terrace facing the park, a master bedroom with an en-suite shower room, three bedrooms, a bathroom with a bathtub and a toilet, an additional guest toilet, and a large storage room accessible from the garden. All bedrooms enjoy access to the garden.

Views of the Prague Castle, heat recovery ventilation, air-conditioning in the living room, hardwood floors, tiles, automatic exterior blinds, gas boiler, Siemens and AEG appliances, dishwasher, induction cooktop, stone kitchen counter top, video entry phone, alarm. Garage for 2-3 cars.

