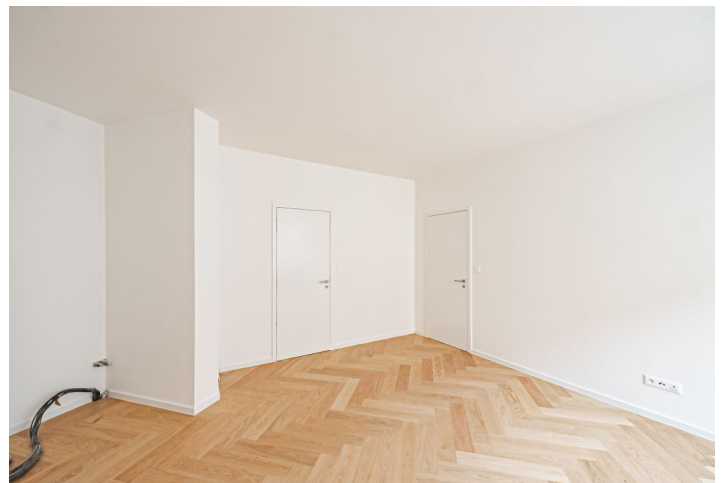


Apartment Three-bedroom (4+kk)

Sold

90 m², Prague 2, Vinohrady, Londýnská

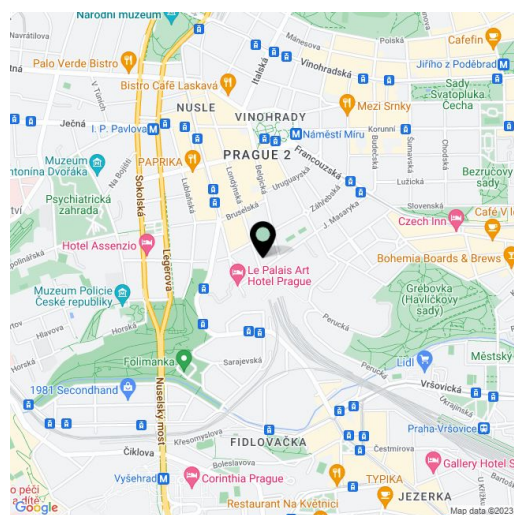


Apartment Three-bedroom (4+kk)

Sold

90 m², Prague 2, Vinohrady, Londýnská

Total area	93 m ²
Floor area*	90 m ²
Balcony	3 m ²
Parking	-
Cellar	Yes
PENB	C
Reference number	42819



* Area of the unit according to the Civil Code. The area consists of the sum total area of the entire unit bounded by perimeter walls.

This newly reconstructed, high-standard apartment with a practical 3-bedroom layout and a balcony facing the courtyard is part of a recently completed residence created through the complete reconstruction of a Functionalist building in an attractive location on the border of New Town and Vinohrady, within easy reach of a full range of services and carefully maintained parks.

The layout of this 2nd floor apartment offers a living room connected to a kitchen and dining room, 3 bedrooms, 2 bathrooms, a hallway, an entrance hall, and a balcony accessible from 1 bedroom.

High-standard facilities include lacquered double-layer hardwood floors in a tree pattern with a white skirting board, large-format tiles and Graniti Fiandre tiles in natural stone decor, Hansgrohe sanitary ware, Vitra bathroom fittings, security entrance doors, interior doors with concealed hinges, wooden thermal insulated Euro-windows with double-glazed panes, and a videophone. Heating and hot water are provided by a central boiler. The building has tasteful common areas and a glass elevator. It is possible to purchase a cellar storage unit.

The area is distinguished by a large number of quality restaurants, cafes, and rich cultural activities. Several schools, including a Lauder kindergarten, elementary school, and prestigious high school are within easy reach. You can comfortably walk to Náměstí Míru Square with the Church of St. Ludmila and the Grebovka, Riegrovy, or Čelakovského Sady parks. The I.P. Pavlova metro and tram station is practically right by the building.

Floor area 89.3 m², balcony 3.4 m².

Photos with furniture are of already completed units in the project.

Apartment Three-bedroom (4+kk)

90 m², Prague 2, Vinohrady, Londýnská

Sold

DISPOZICE / DISPOSITION

4+kk

PODLAŽÍ / FLOOR

3. NP

VÝMĚRA BYTU / FLAT AREA

89,30 m²

UPROZORNĚNÍ: Schéma podlažní představuje dispozici řešení bytu. Zobrazení vybavení nábytkem, vestavěné skříně, kuchyňská linka včetně spotřebičů a pračky nejsou součástí smlouvy bytu. Toho vybavení je zobrazeno pouze pro názornost. Projeví-li pochozí bytu je vypočtena dle národního věšty č. 386/2013 Sb. Veškeré informace jakékoli publikované v tomto dokumentu jsou nezavazující a mohou být změněny bez předvarování. Kde je to možné, jsou uvedeny jako návod k užití smlouvy ani se jich neza závazek.



Byt č. 2578/605

5.1	chodba	9,06 m ²
5.2	obývací pokoj	26,11 m ²
5.3	chodba	2,14 m ²
5.4	koupelna	4,28 m ²
5.5	ložnice	16,69 m ²
5.6	pokoj	9,31 m ²
5.7	pokoj	12,46 m ²
5.8	koupelna	6,61 m ²
	balkon	3,40 m ²
	Plocha bytu	89,30 m ²

VÝMĚRA BYTU / FLAT AREA



PODLAŽÍ / FLOOR

