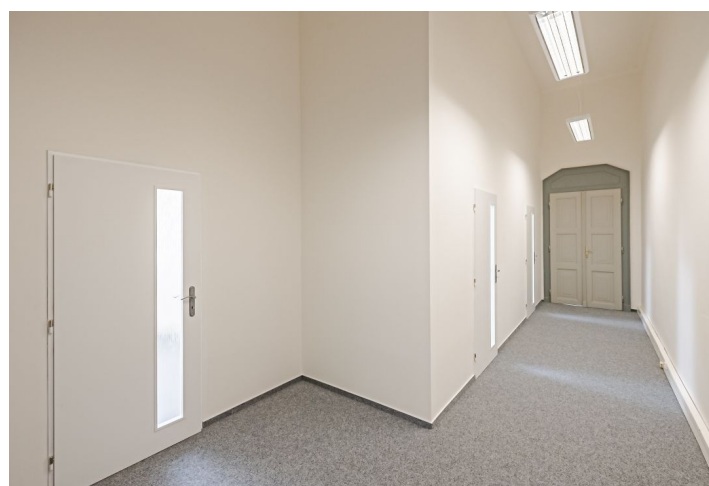
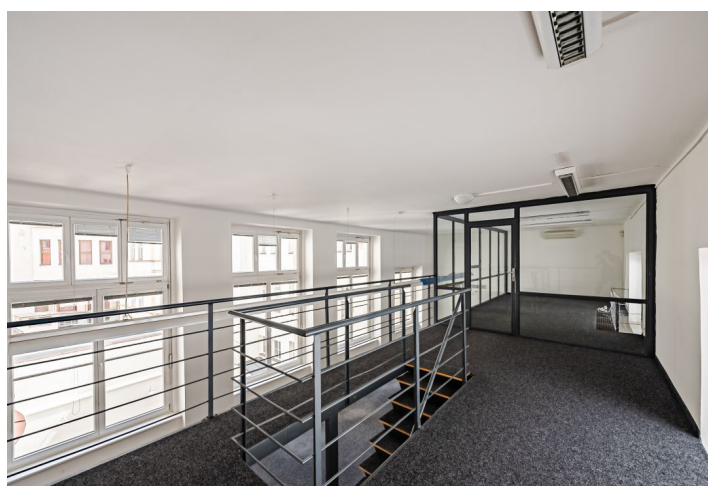
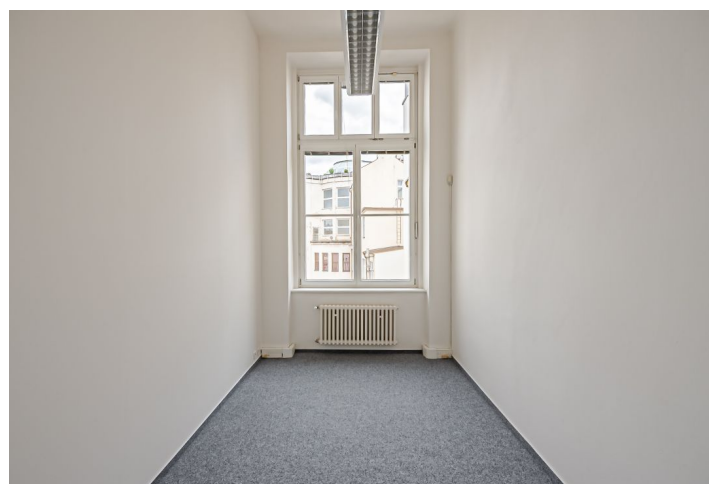


Office space

Rented

Prague 1, Nové Město, Opletalova



Prague 1, Nové Město, Opletalova

Service price	included
Available area	77 m ²
Cellar	-
Parking	Yes
PENB	G
Reference number	42783

Office space for lease on the 2nd floor of a renovated historical building in the centre of Prague, on the border of the Old and New Town. It consists of two five-storey buildings and parking areas in the courtyard. The property offers a combination of historical architecture with modern elements. The building is equipped with a chip entry system, fibre optic internet cabling, encryption system and connection to the central reception. Openable windows, air conditioning, sanitary facilities on each floor and total of 14 parking spaces.

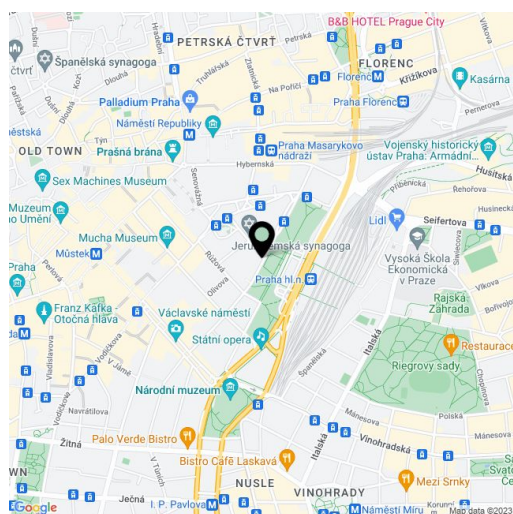
Location:

Situated in a strategic location in New Town, the building is in close vicinity to Hlavní Nádrazí – the main railway station, and Masaryk railway station, and the Florenc bus station as well. Outstanding accessibility by car and public transportation – close to city highway with direct connection to D1 highway, within walking distance of metro stations Hlavní Nádrazí (line C), Náměstí Republiky (line B), Florenc (lines B, C); tram stop directly next to the building.

Features and Services:

- Bright and fully air-conditioned space
- Lighting fixtures
- Computer network with telephones
- Internet connection
- Separate toilets and a kitchenette on each floor

Rental and service charges are listed without VAT. Lessee pays no commission.



Office space

Prague 1, Nové Město, Opletalova

Rented

Aktuální půdorys

