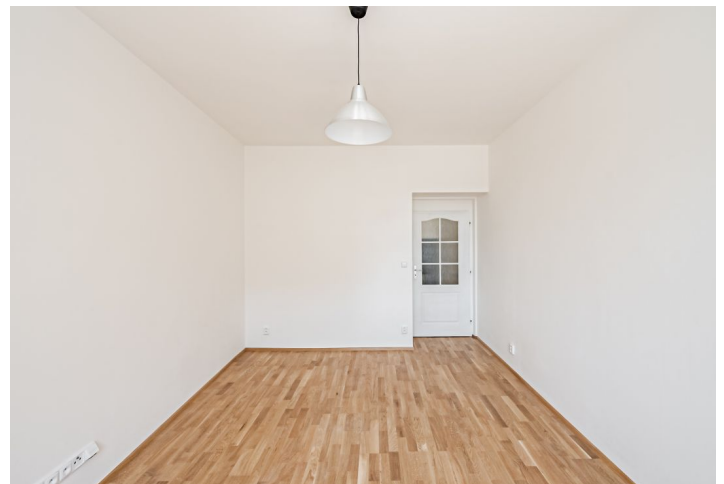


Apartment One-bedroom (2+kk)

Rented

50 m², Prague 7, Holešovice, Jankovcova



Apartment One-bedroom (2+kk)

Rented

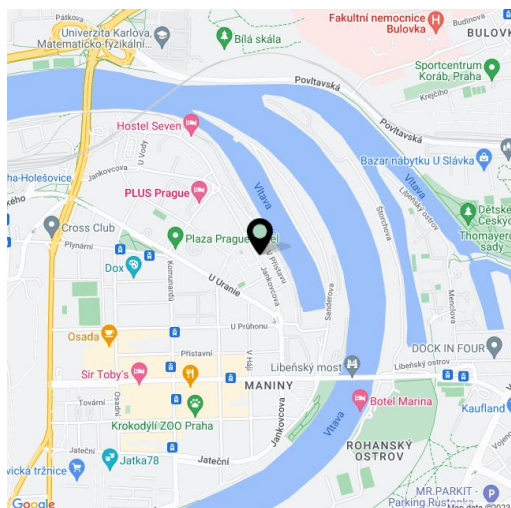
50 m², Prague 7, Holešovice, Jankovcova

Total area	50 m ²
Parking	-
Cellar	Yes
Service price	Deposit for service charges and water CZK 1,700/month for two persons. Gas and electricity - transfer to the tenant.
PENB	G
Reference number	42755
Available from	Immediately

This refurbished 1-bedroom apartment is on the second floor of a renovated residential building with a lift, just moments from the Vltava riverbank, near a park with a playground and a fitpark. Located in Holešovice, Prague 7, near tram stops with quick access to the Nádraží Holešovice, Palmovka, and Vltavská metro stations, and the city center. Full amenities are within easy reach incl. schools, shops, medical facilities, quality restaurants, bistros and cafes, as well as the La Fabrika Theater, the DOX Centre for Contemporary Art, and other cultural venues.

The apartment has a living room, a bedroom facing the quiet green courtyard, a bathroom including a bathtub and a toilet, plus a fully fitted kitchen in the entrance hall.

Wooden floating floors, tiles, gas boiler, washing machine, dishwasher, cellar.



* Area of the unit according to the Civil Code. The area consists of the sum total area of the entire unit bounded by perimeter walls.