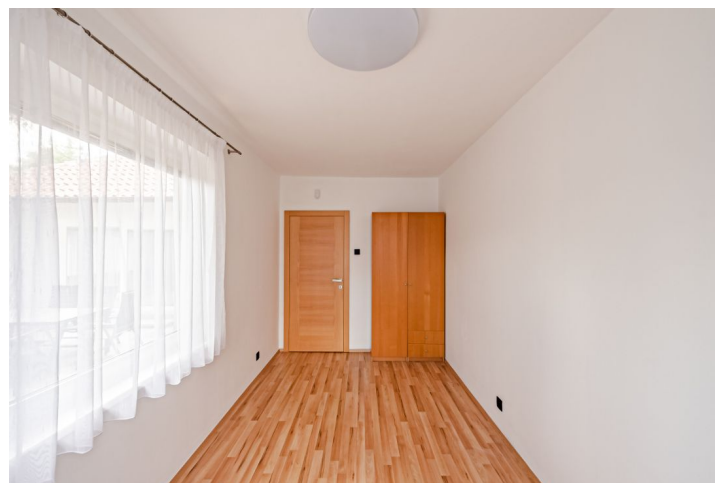
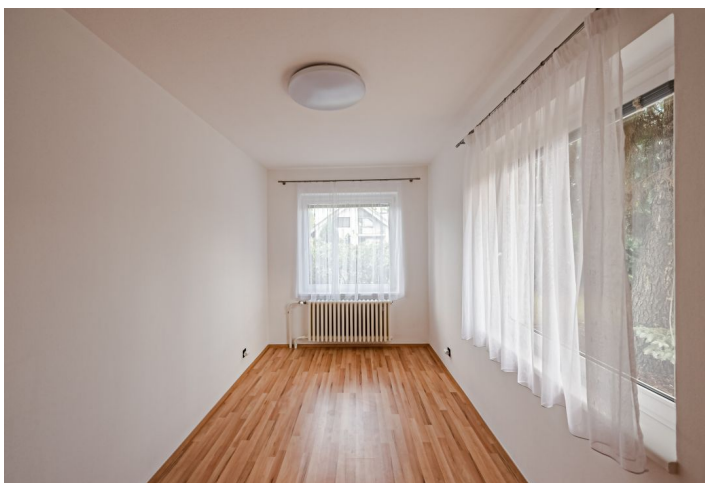


House Two-bedroom (3+kk)

Rented

138 m², Prague 9, Klánovice, Holekova



House Two-bedroom (3+kk)

Rented138 m², Prague 9, Klánovice, Holekova

Plot	1 038 m ²
Foot print	138 m ²
Garden	900 m ²
Parking	Parking on the plot.
Cellar	Yes
Service price	Monthly deposit for utilities, garbage removal, and garden maintenance CZK 7,000.
PENB	G
Reference number	42631
Available from	01.07.2025

This furnished one-story freestanding home with a terrace and a landscaped mature garden is in a quiet residential neighborhood in the popular village of Klánovice, 20 km from the center of Prague (approx. 30 minutes by car). The location boasts the largest contiguous forested area in Prague consisting of the Klánovice nature reserve and the Cyrilov Forest, with marked hiking trails and 20 km of bike paths. Situated 300 m from the local swimming pool, a few bus stops from a railway station with very frequent train connections to the Masaryk Station in Prague (22 min.), and within easy reach of Klánovice's amenities and services.

The interior features a living room with a **fireplace**, a fully fitted open plan kitchen, dining area, and access to the **terrace**, two bedrooms, a bathroom including a walk-in shower, a bidet and a toilet, and an entrance hall.

Hardwood floors, tiles, French windows, blinds, gas boiler, washer/dryer, dishwasher, induction cooktop, **cellar**, private well. **Parking** for two cars on the plot.

