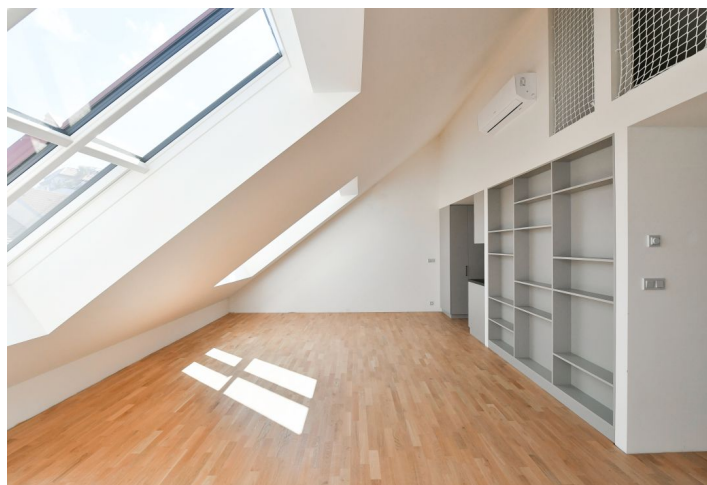


Apartment One-bedroom (2+kk)

Rented

75 m², Prague 3, Žižkov, Bořivojova



Apartment One-bedroom (2+kk)

Rented

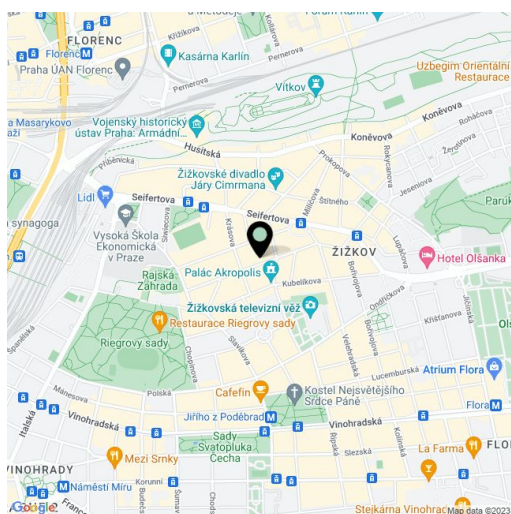
75 m², Prague 3, Žižkov, Bořivojova

Total area	75 m ²
Parking	-
Cellar	Yes
PENB	D
Reference number	42523
Available from	Immediately

This brand new 1-bedroom split-level attic apartment with nice views is on the fifth topmost floor of a completely refurbished traditional residential building with an elevator, on the edge of the Vinohrady neighborhood just minutes from Riegrovy Sady Park. A location with full amenities within easy reach, two short tram stops to the Hlavní nádraží metro station and within walking distance of the Jiřího z Poděbrad metro station. Rajská zahrada (the "Garden of Eden"), a multipurpose park with a beautiful garden and a children's playground, is also situated nearby.

The lower level features a living room with a fully fitted open plan kitchen and an atelier window, a bedroom with views of the Church of St. Procopius and Vítkov Hill Park, a bathroom with a walk-in shower and toilet, and an entrance hall. The upper level offers a gallery and a windowless guest bedroom.

Air-conditioning, wooden floating floors, large-format tiles, security entry door, built-in wardrobes, central underfloor heating, washing machine, dishwasher, microwave oven, video entry phone, **cellar**. Monthly deposit for service charges and heating CZK 4,865/month. Electricity is billed separately. Available from mid August 2022.



* Area of the unit according to the Civil Code. The area consists of the sum total area of the entire unit bounded by perimeter walls.