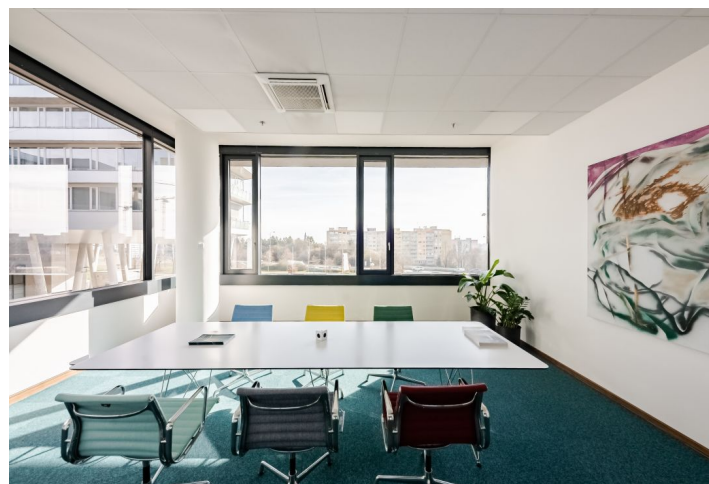
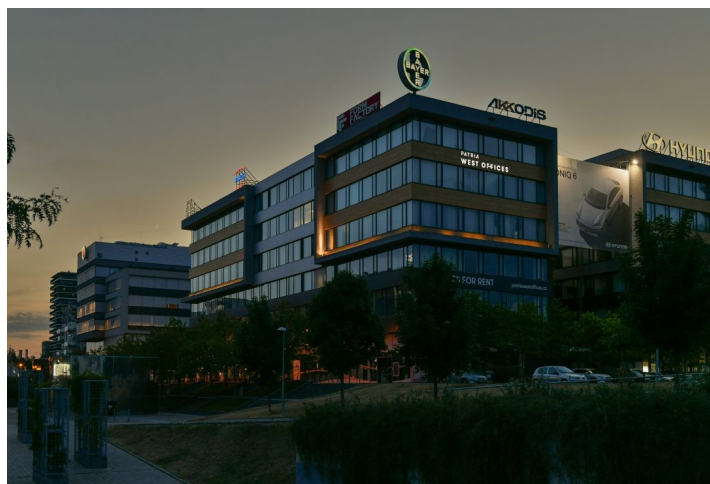




Office space

Prague 5, Stodůlky, Siemensova

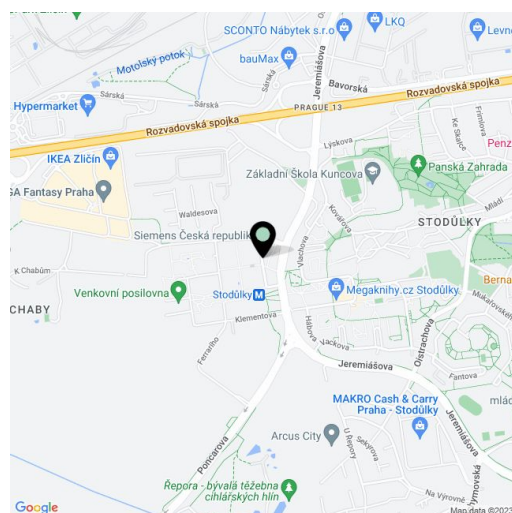
Rented





Prague 5, Stodůlky, Siemsensova

| | |
|------------------|------------------------------------|
| Service price | 140 CZK monthly per m ² |
| Available area | 3 358 m ² |
| Cellar | - |
| Terrace | 255 m ² |
| Parking | EUR 110 / pp / month |
| PENB | B |
| Reference number | 42471 |



The Patria West Offices (City West B1 building) building offers modern class AA office space for lease in a pleasant location in the western part of Prague. The building includes an elegant reception, storage space, and rooms for bike parking and showers. West Flexi Offices, which offer coworking space, day offices, furnished meeting rooms, focus rooms for shorter meetings or telephone calls, a lounge, and relaxation areas, are also part of the building.

Tenants can use the fitness center or outdoor gym and there are up to 426 parking spaces in the underground garage. The park that surrounds the complex was created by the Jena Studio. The main axis of this green area is a stream, along which the vegetation gradually changes. Plane trees line the promenade that crosses the complex, and another striking feature of the garden are the metal trellises built for wisterias to climb.

Location:

Excellent accessibility by car and public transport—the city center is about 20 minutes away by metro from the Stodůlky station (line B), which is right next to the building. There are also great connections to the D5 highway, the Prague Ring Road, and the main routes connecting the complex to the city center and to the Václav Havel International Airport. A number of restaurants, bistros, cafes, and an outdoor gym are in the complex; the large Central Park and the Metropole Zličín or Homepark Zličín malls are also close-by.

Facilities and services:

Central reception with 24/7 security

One floor reserved for [West Flexi Offices](#) serviced offices with flexible lease terms

Air-conditioning

Exterior blinds

UPS and diesel generators

Electronic access

CCTV camera system

Electronic smoke detectors

9 elevators

Structured cabling

Raised floors

Openable windows

426 parking spaces in the underground garage - parking ratio 1:54

Siemens and E.ON charging stations

Lounge and relaxation areas

Storage space

Meeting rooms, focus rooms

Bicycle room and showers on each floor

Restaurant

Fitness center in the building and outdoor gym

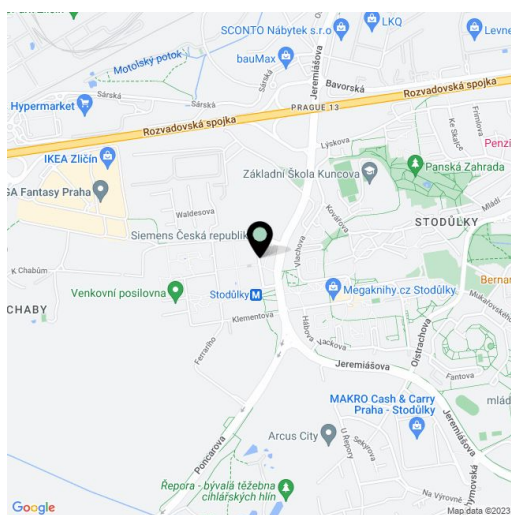
Large park with relaxation areas

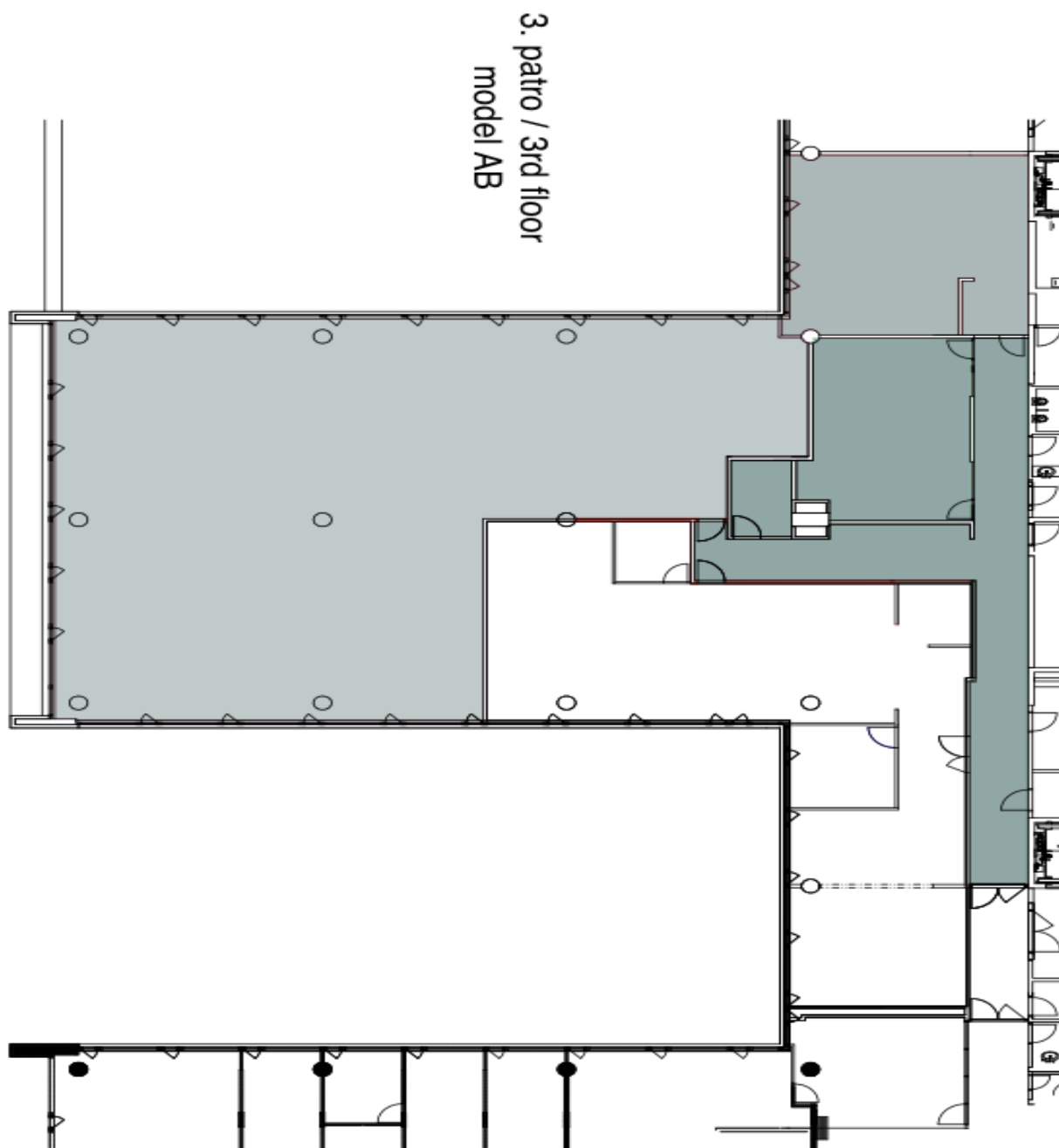
**Office space****Rented**

Prague 5, Stodůlky, Siemensova

| | |
|------------------|------------------------------------|
| Service price | 140 CZK monthly per m ² |
| Available area | 3 358 m ² |
| Cellar | - |
| Terrace | 255 m ² |
| Parking | EUR 110 / pp / month |
| PENB | B |
| Reference number | 42471 |

Rental and service charges listed without VAT. Lessee pays no commission.



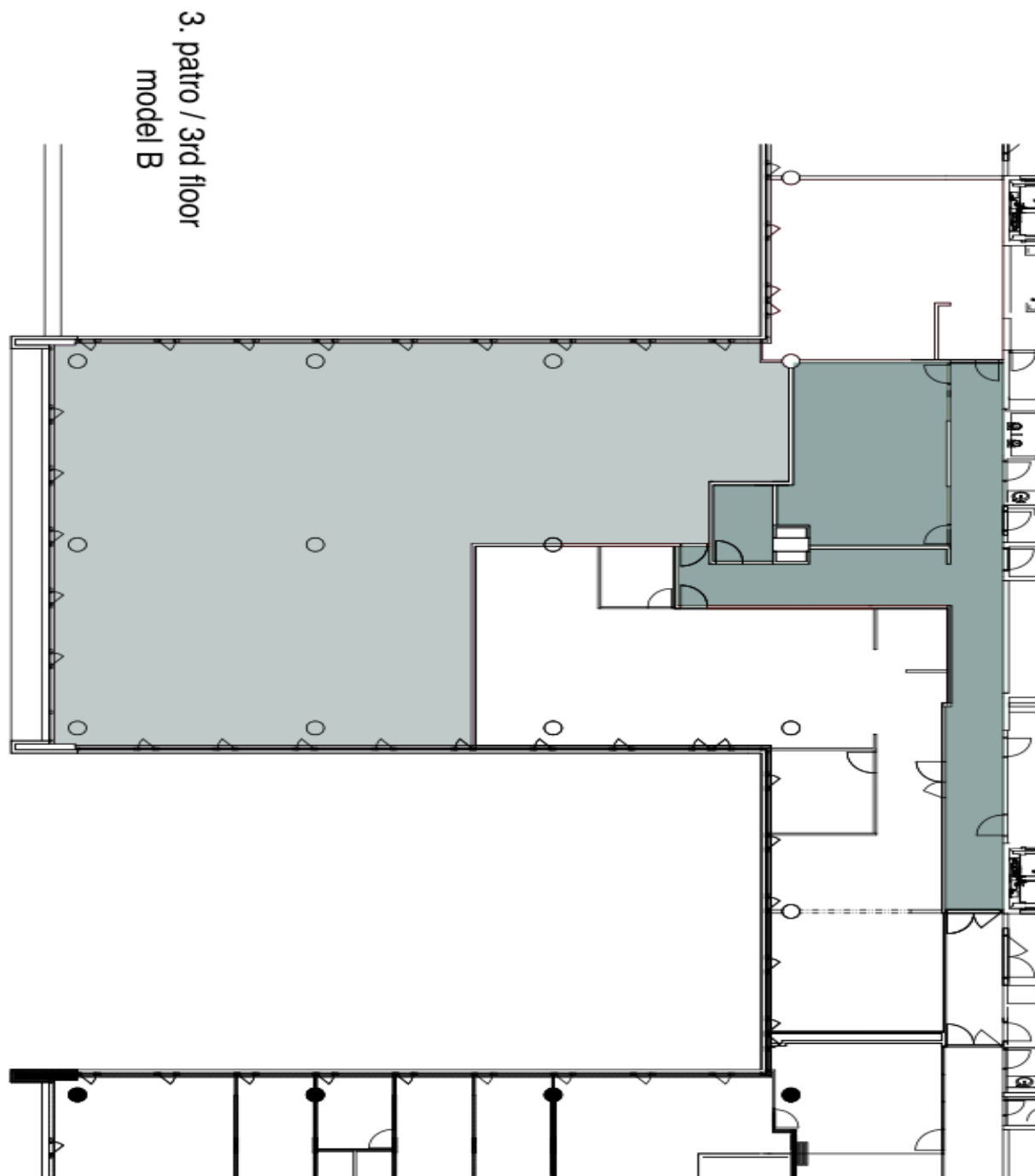




Office space

Prague 5, Stodůlky, Siemensova

Rented

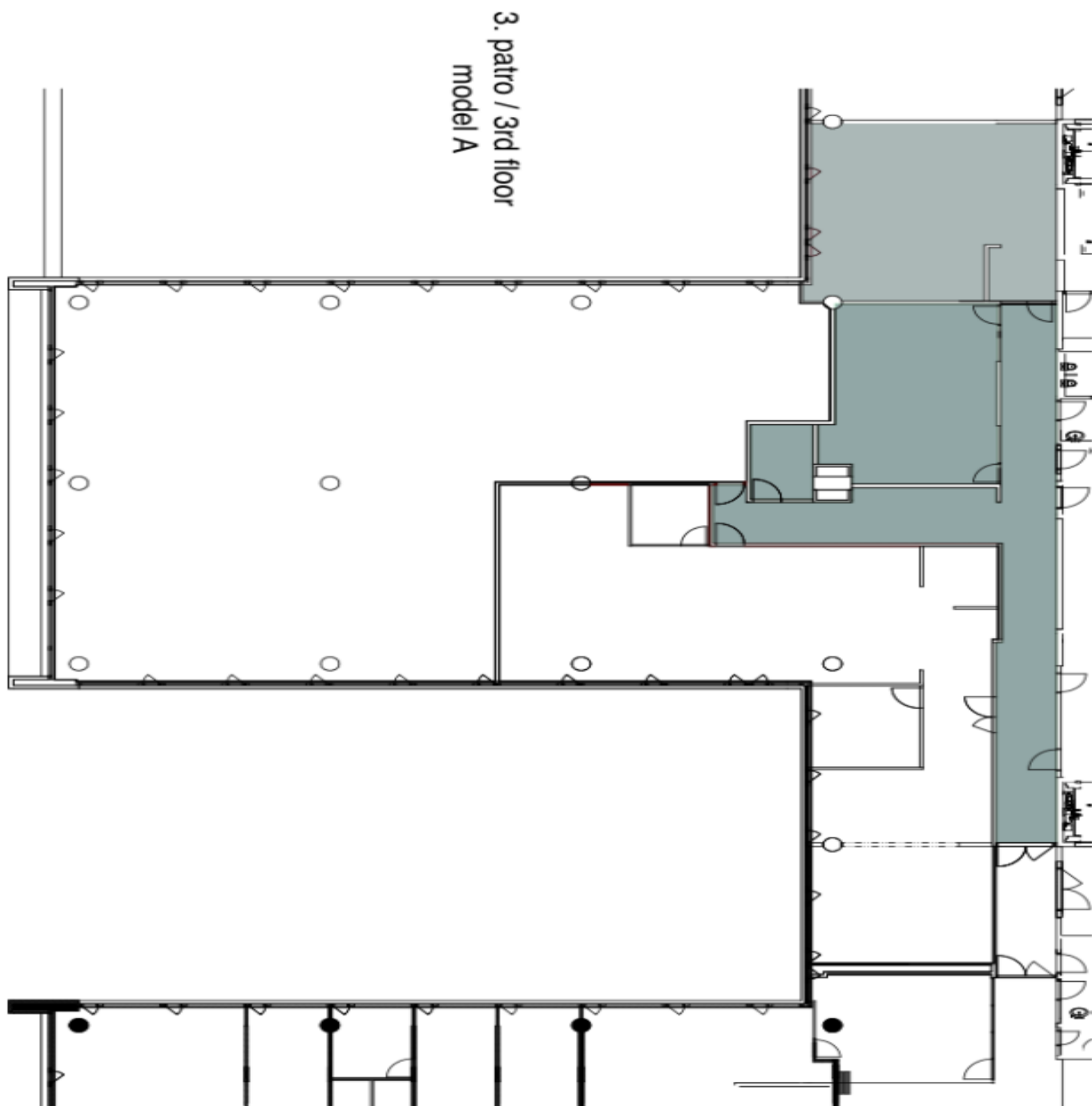




Office space

Prague 5, Stodůlky, Siemensova

Rented

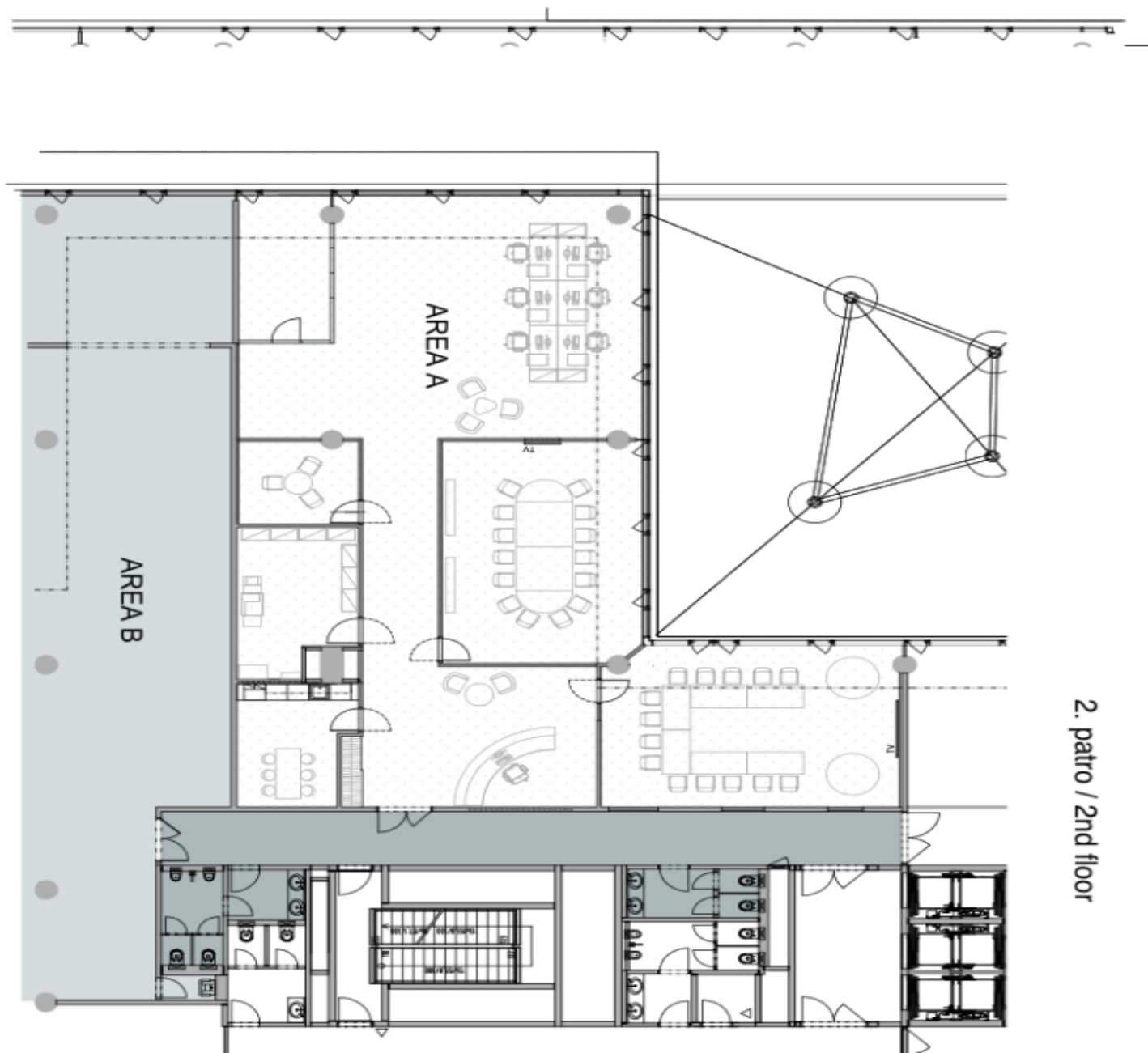




Office space

Prague 5, Stodůlky, Siemensova

Rented





Office space

Prague 5, Stodůlky, Siemsenova

Rented

