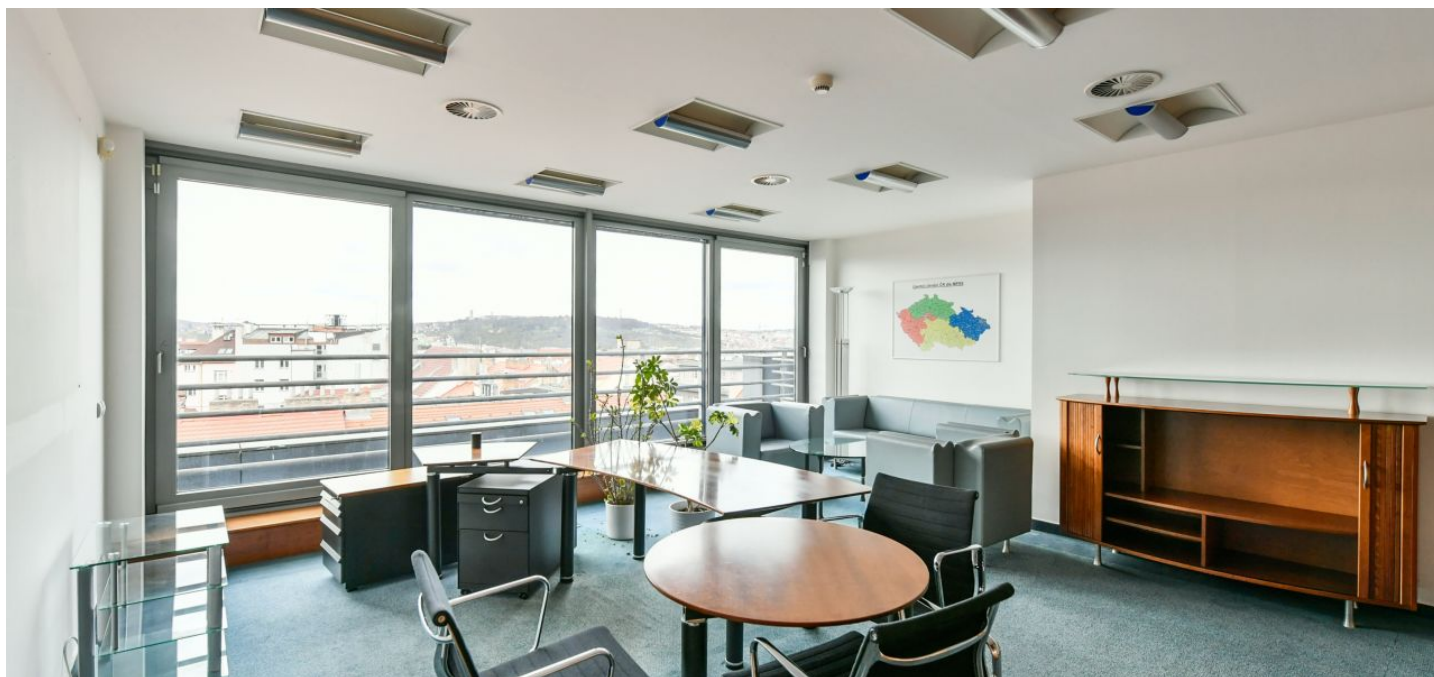


Office space

Rented

Prague 2, Vinohrady, Bělehradská



Office space

Rented

Prague 2, Vinohrady, Bělehradská

Service price	110 CZK monthly per m ²
Available area	638 m ²
Cellar	-
Terrace	23 m ²
Parking	Yes
PENB	G
Reference number	42299

Office space for lease on the 6th floor in An administrative building located in the city center. The building was completed in 1998 by Czech architect Ing. arch. Martin Kotík. Raster, point, and structural façade with a framed fire protection structure with a shading system. The basement offers two levels of parking with two automated parking systems. There are two elevators, kitchenettes, toilets and ample terraces with views. The building also has openable windows, CCTV, carpets, and smoke detectors.

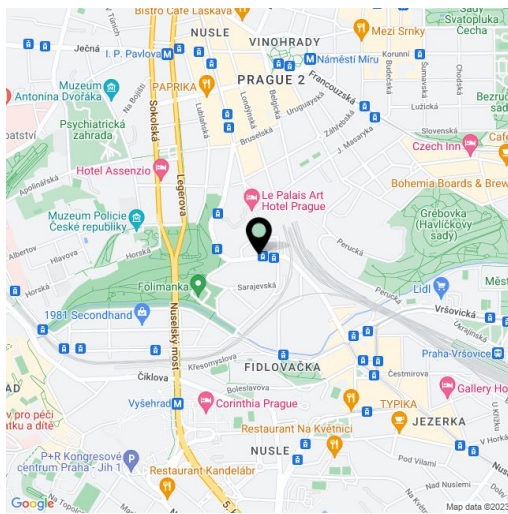
Location:

Excellent accessibility by car and public transport. The I.P. Pavlova tram stop and I.P. Pavlova metro station (line C) are nearby. Wenceslas Square is 10 minutes away by metro or tram. Complete civic amenities in the vicinity.

Features and services:

- Floor boxes
- Carpets
- Kitchenettes
- Sanitary facilities
- Fan coils
- Alarm
- Lighting
- Terraces
- Double floor
- Openable windows
- Smoke detector
- CCTV
- 2 elevators
- Underground parking

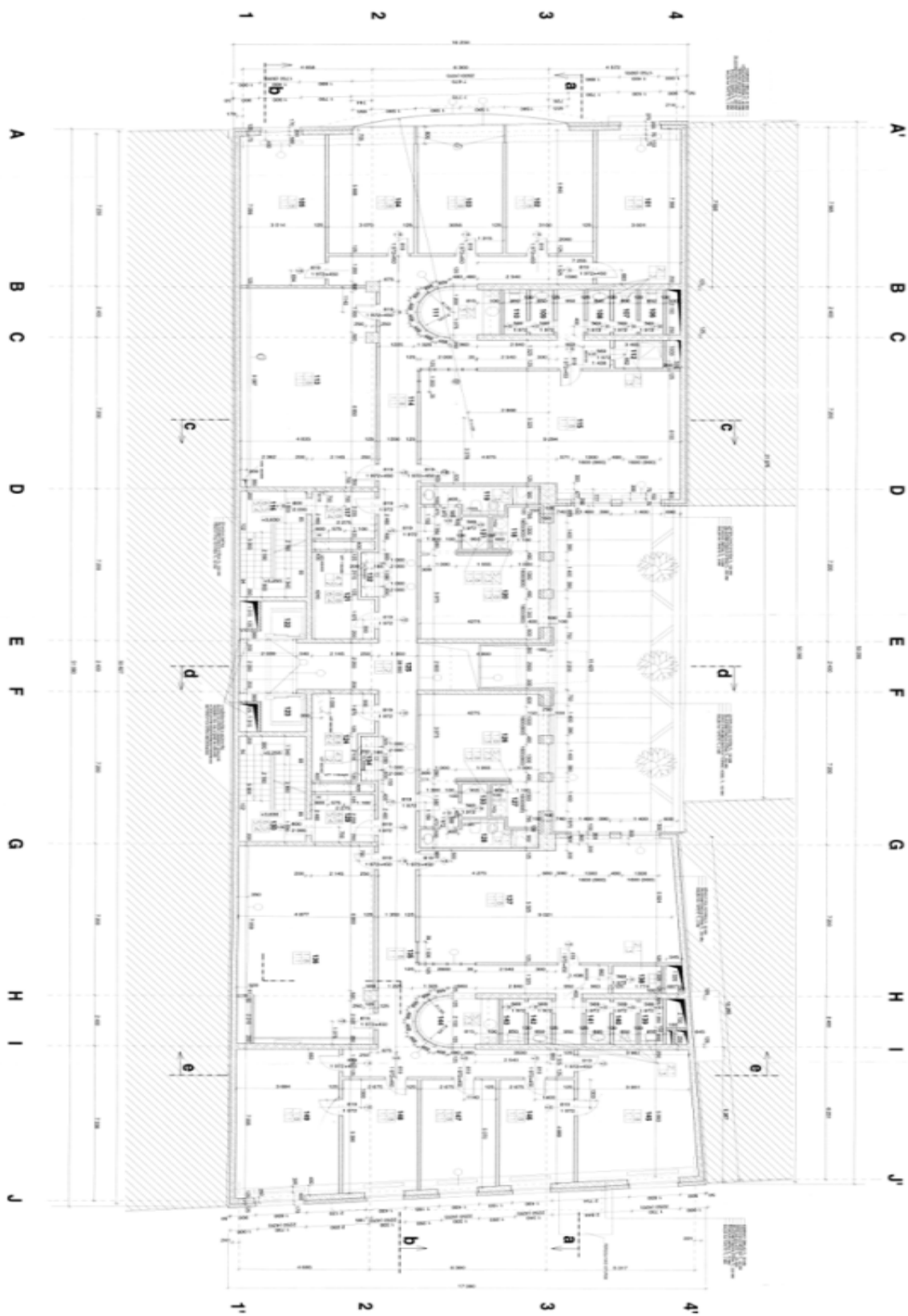
Rental and service charges are listed without VAT. Lessee pays no commission.



Office space

Rented

Prague 2, Vinohrady, Bělehradská



typické podlaží / typical floor