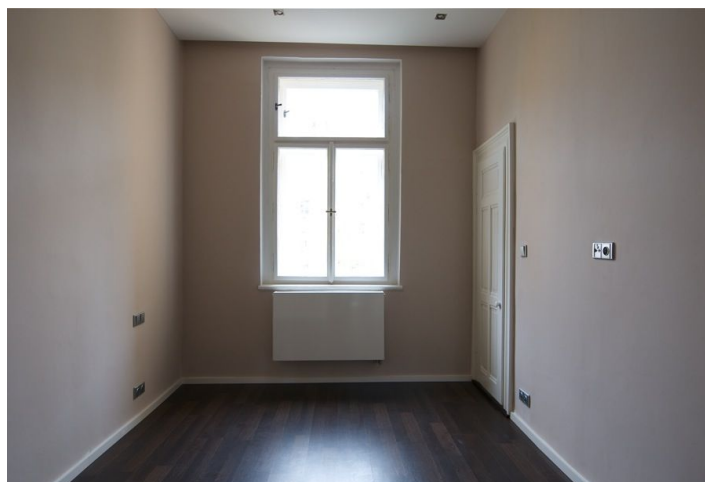


Apartment One-bedroom (2+kk)

Rented

52 m², Prague 2, Vinohrady, Kodaňská



Apartment One-bedroom (2+kk)

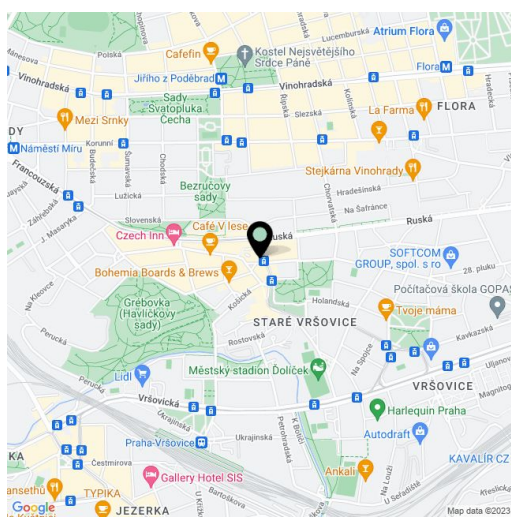
Rented52 m², Prague 2, Vinohrady, Kodaňská

Total area	52 m ²
Parking	Garage parking space included.
Garage	Yes
Cellar	-
PENB	G
Reference number	4213
Available from	Immediately

Attractive furnished architect designed 1-bedroom flat on the upper ground floor of a fully renovated historic building with lift close to Heroldovy Sady Park.

The apartment features living room with fully fitted open plan kitchen, bedroom with walk-in closet, bathroom, and entry hall. Built-in wardrobes, wood floors, washer, dishwasher, ceramic cooktop, Internet, satellite TV connection, video entry phone. Security cameras in the building.

Steps from tram and bus stop, 2 stops to Náměstí Míru metro station. Monthly charges for services CZK 5000 including electricity used in the flat. The flat is furnished despite the photos.



* Area of the unit according to the Civil Code. The area consists of the sum total area of the entire unit bounded by perimeter walls.