

Office space

€ 11.00 / m² | CZK 275 / m²

Prague 4, Chodov, Tomíčková



Office space

€ 11.00 / m² | CZK 275 / m²

Prague 4, Chodov, Tomíčková

Available area	295 m ²
Cellar	-
Parking	Yes
PENB	Not required
Reference number	41885

Office space for sublease until 31st December 2030 on the 4th floor in Prague 4. For tenants there is a café, canteen or bistro in the building. Bicycle racks and showers can also be used. The building was built in 2002 and was designed by the Czech architect Lubomír Zeman.

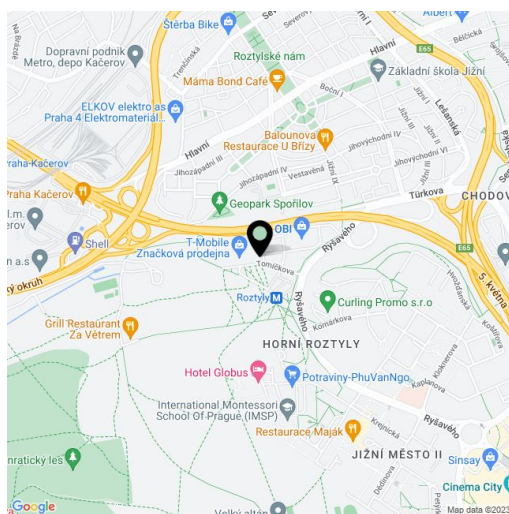
Location:

The building is located in the immediate vicinity of the Roztyly (line C) metro station and bus stop. Direct connection to the Prague Ring Road and D1 motorway.

Features and services:

- Parking
- Canteen, bistro, cafe
- Bicycle stands
- Showers
- Possibility to place company logo

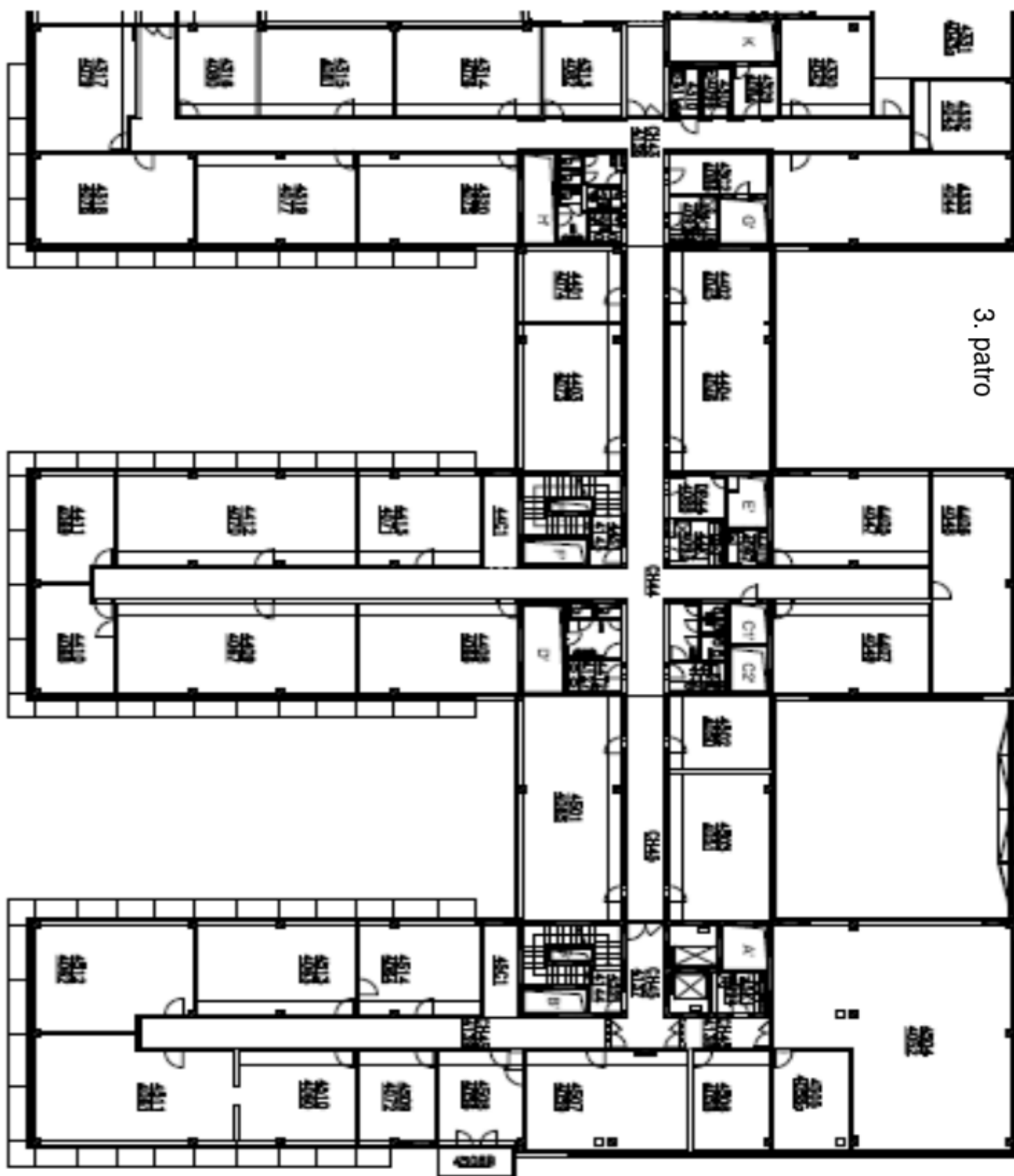
Rental and service charges listed without VAT. Lessee pays no commission.



Office space

€ 11.00 / m² | CZK 275 / m²

Prague 4, Chodov, Tomíčková



2. patro

blok 4

blok 5

