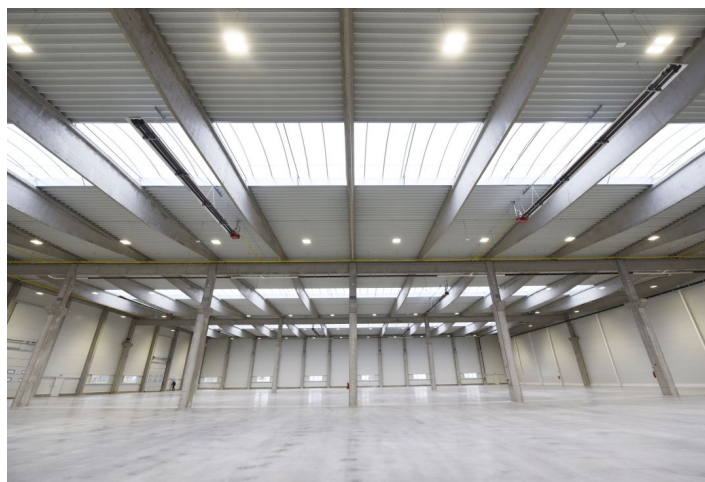


Logistic park

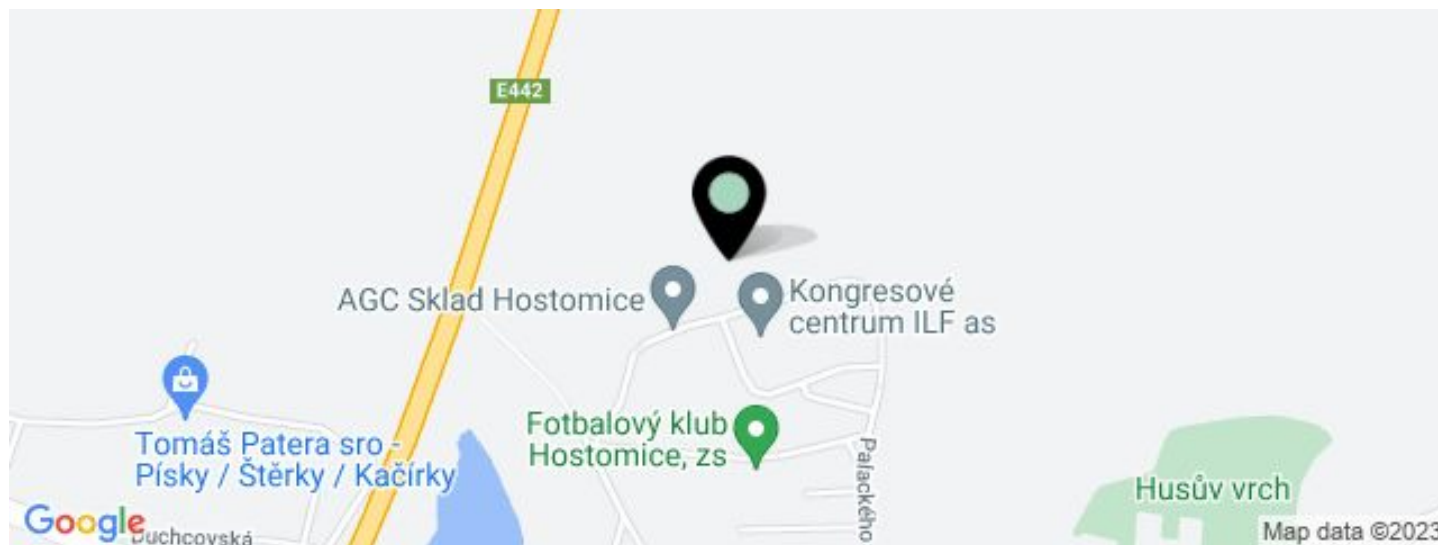
9 548 m², Teplice, Hostomice, Palackého

Ask for price



Logistic park

Ask for price

9 548 m², Teplice, Hostomice, Palackého

UNIT	AVAILABLE AREA	SERVICES	PARKING	MONTHLY RENT
Warehouse premises	3 150 m ²	0 CZK monthly	No	Ask for price

Logistic park

Ask for price9 548 m², Teplice, Hostomice, Palackého

Total area	9 548 m ²
Available area for rent	3 150 m ²
Ceiling height	10 m
Floor loading capacity	5 t/m ²
Column grid structure	—
Structure	Reinforced concrete structure
PENB	G
Reference number	41708

The logistic park offers new production and storage premises for rent.. External paved area of approximately 2,500 sq.m. The premises are suitable for light production or storage.

Location:

The area is located near Teplice on road 13 and is easily accessible from the D8.

Features and Services:

- Onsite property management
- Park maintenance
- Security on the premises
- Car parking places

Storage/Industrial space:

- Floor loading capacity 5 T/sq.m.
- Clear height 10 m
- 3 direct entries
- Column grid structure 24 x 12 m
- LED lighting

Office:

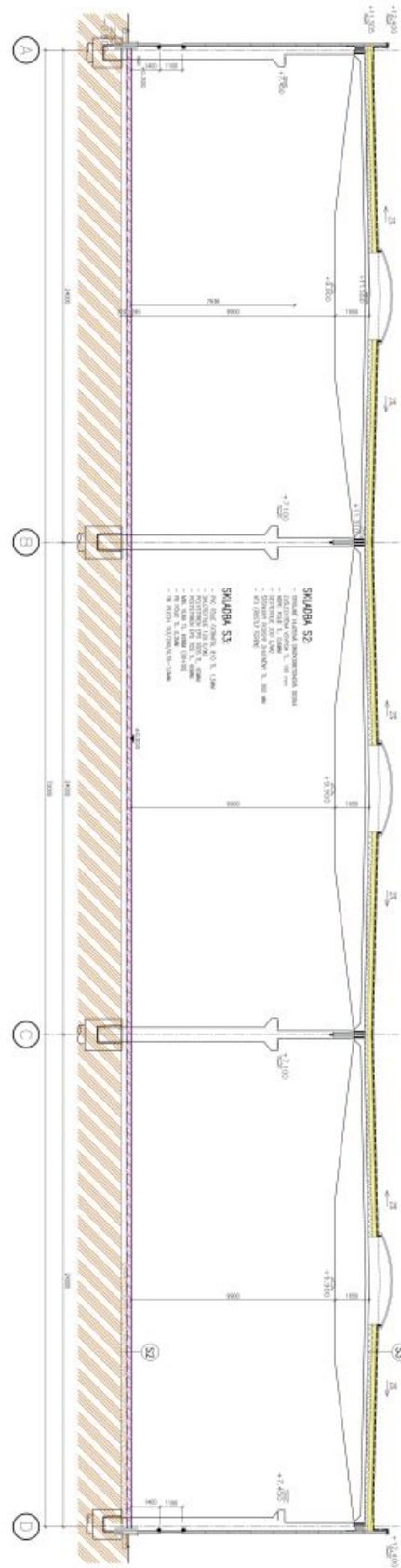
- Office space according to the client's requirements

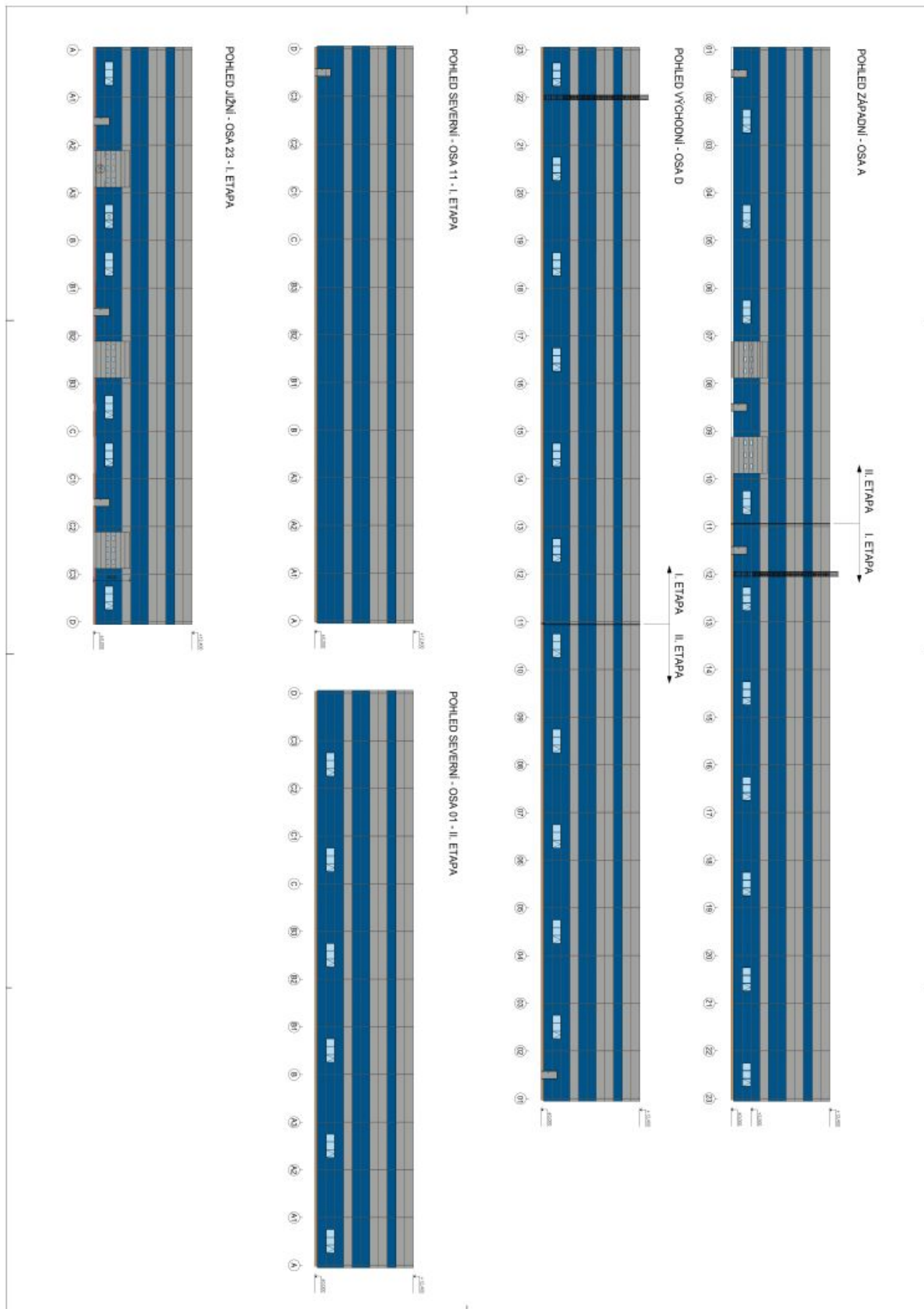
Lessee pays no commission.

Logistic park

9 548 m², Teplice, Hostomice, Palackého

Ask for price





9 548 m², Teplice, Hostomice, Palackého

