

Industrial park

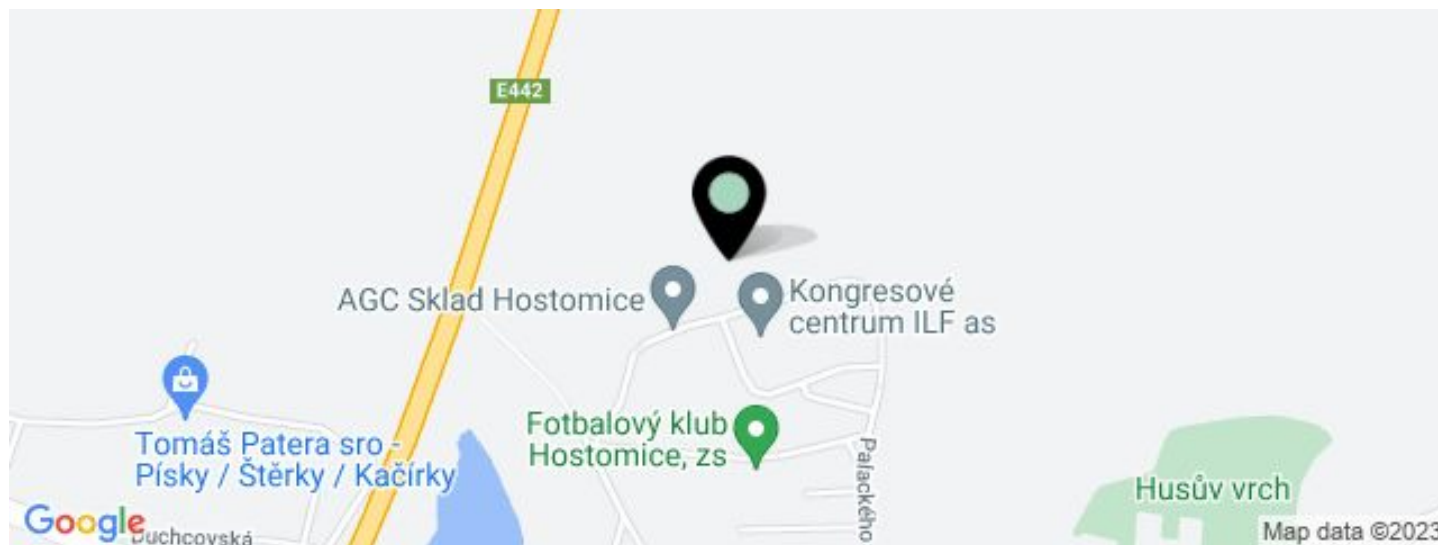
Ask for price

3 150 m², Teplice, Hostomice, Palackého



Industrial park

Ask for price

3 150 m², Teplice, Hostomice, Palackého

UNIT	AVAILABLE AREA	SERVICES	PARKING	MONTHLY RENT
Industrial premises	3 150 m ²	0 CZK monthly	No	Ask for price

Industrial park

[Ask for price](#)3 150 m², Teplice, Hostomice, Palackého

Total area	3 150 m ²
Available area for rent	3 150 m ²
Ceiling height	10 m
Floor loading capacity	5 t/m ²
Column grid structure	—
Structure	Reinforced concrete structure
PENB	G
Reference number	41707

The complex offers new production and storage premises for rent. External paved area of approximately 2,500 sq.m. The premises are suitable for light production or storage.

Location:

The area is located near Teplice on road 13 and is easily accessible from the D8.

Features and Services:

- Onsite property management
- Park maintenance
- Security on the premises
- Car parking places

Storage/Industrial space:

- Floor loading capacity 5 T/sq.m.
- Clear height 10 m
- 3 direct entries
- Column grid structure 24 x 12 m
- LED lighting

Office:

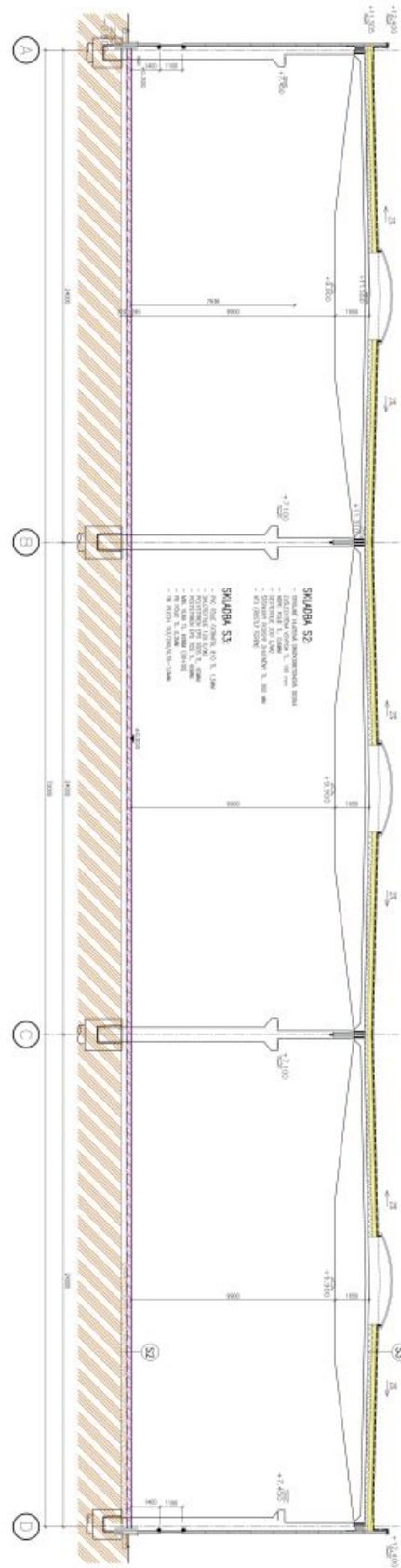
- Office space according to the client's requirements

Lessee pays no commission.

Industrial park

3 150 m², Teplice, Hostomice, Palackého

Ask for price



3 150 m², Teplice, Hostomice, Palackého

