

Apartment Three-bedroom (4+kk)

Sold

122 m², Prague 3, Žižkov, Jeseniova

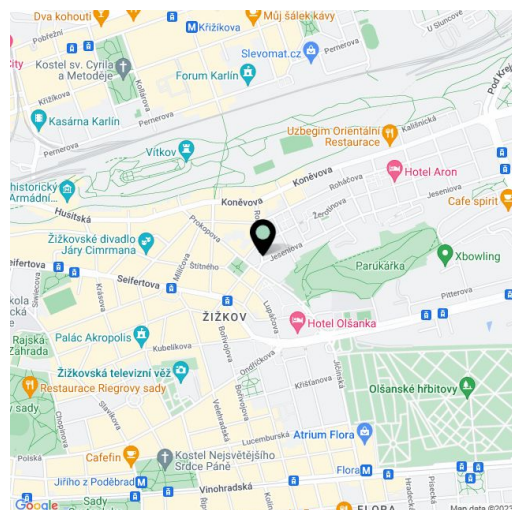


Apartment Three-bedroom (4+kk)

Sold

122 m², Prague 3, Žižkov, Jeseniova

Total area	440 m ²
Floor area*	122 m ²
Terrace	318 m ²
Parking	1 000 000 CZK
Garage	Yes
Cellar	Yes
PENB	C
Reference number	41650



* Size of the unit according to the Housing Act.
The area consists of the sum total of the internal area of every room.

This penthouse offered in a state of Shell & core, with a living room with a ceiling height of 5 meters and two terraces offering views of the nearby greenery and the Prague panorama is located on the 5th and 6th floors of an apartment building situated on a one-way street right next to Parukářka Park. A garage parking space is included in the price.

On the entrance level is a living room with a preparation for a kitchen, a bedroom with an en-suite bathroom, a toilet, and an entrance hall. Upstairs are 2 bedrooms and a bathroom. In the living room is an entrance to a **large terrace**, and from the staircase hall on the upper level you can enter the **roof terrace**. Thanks to the the living room's ceiling height of over **5 meters**, it is possible to create another bedroom in the upper level of the apartment instead of a gallery, thus **enlarging the layout to 4-bedroom**.

The building is from 2007 and the apartment, which has not yet been used, is offered in a condition of **white walls**. Heating is by a gas boiler. The apartment includes **1 garage parking space (second one is possible to purchase additionally)** and a **cellar storage unit**. There is an **elevator** in the building and access to the building is via **chip**.

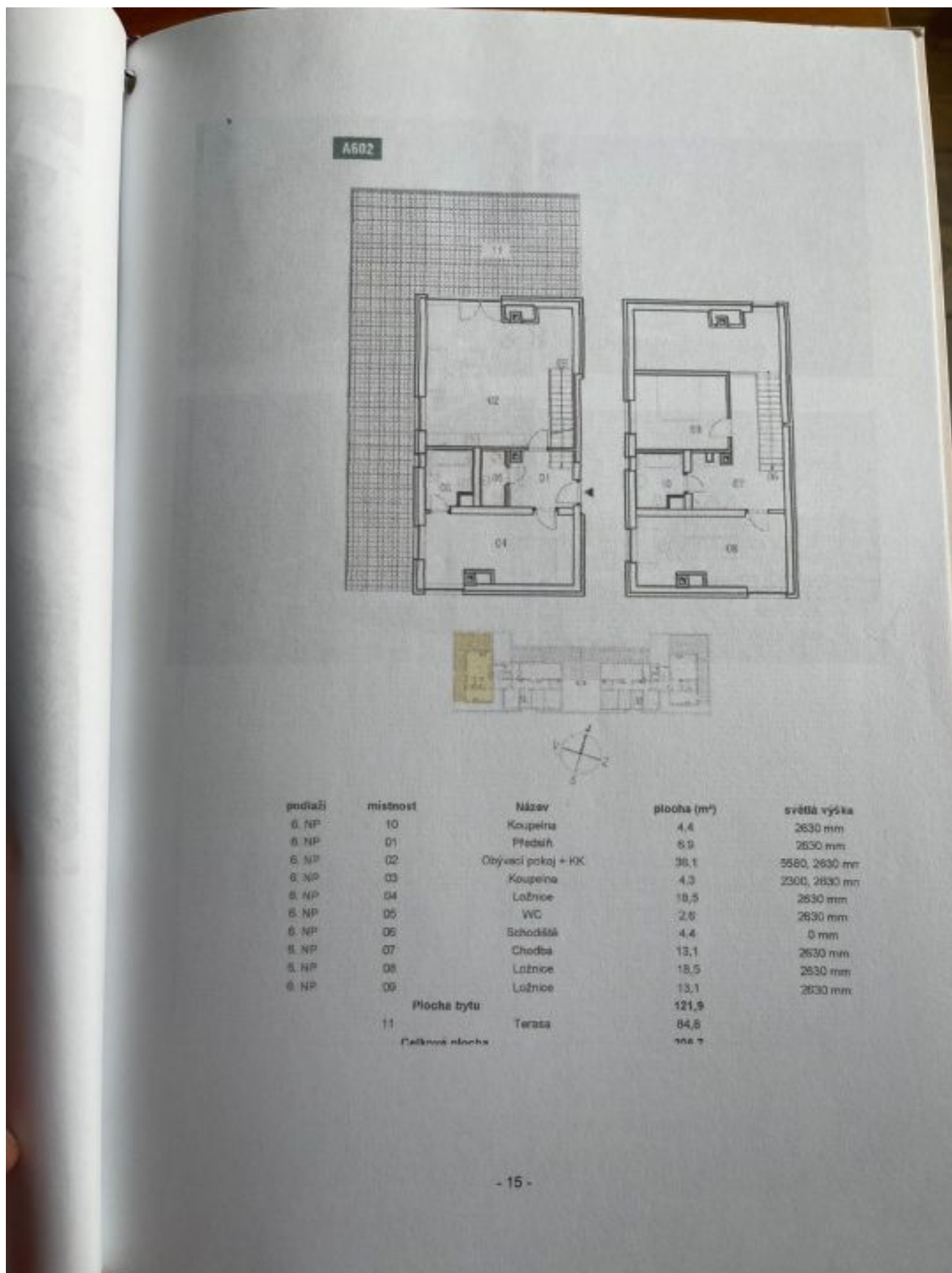
The building stands in a developed area with a complete infrastructure. A few steps away are kindergartens and elementary schools, nurseries, a **high school**, a **Scioškola** high school, a supermarket and other shops, restaurants, and cafes. Excellent accessibility to the city center is ensured by buses. The ride to the Florenc transfer station takes 5 minutes, and to Republic Square 9 minutes. The well-maintained **Parukářka Park** and the nearby **large park on Vitkov Hill** make the neighborhood even more pleasant.

Floor area 122 m², terraces total 317.8 m².

Visualizations are for illustrative purposes only.

Apartment Three-bedroom (4+kk)

Sold

122 m², Prague 3, Žižkov, Jeseniova

- 15 -