

Apartment Six-bedroom (7+1)

Rented

250 m², Prague 2, Nové Město, Apolinářská



Apartment Six-bedroom (7+1)

Rented

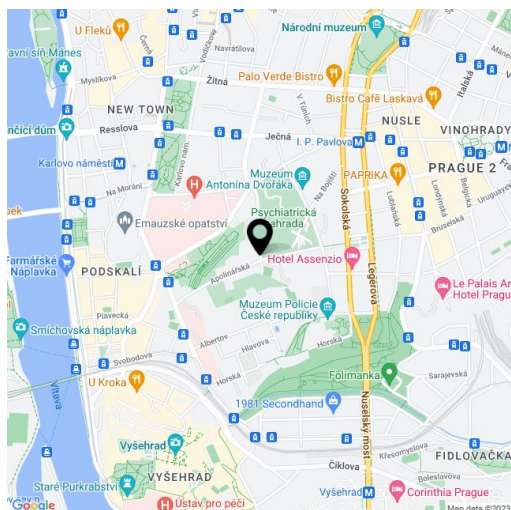
250 m², Prague 2, Nové Město, Apolinářská

Total area	264 m ²
Floor area*	250 m ²
Balcony	5 m ²
Terrace	9 m ²
Parking	Car elevator parking CZK 4,000–6,000/month (differs by car size)
Garage	Yes
Cellar	Yes
PENB	G
Reference number	41626
Available from	Immediately

Unique apartment suitable for diplomats. Boasting a terrace, a balcony, and beautiful views of the neighborhood incl. the Botanical Garden, this 5-bedroom 3-bathroom split-level apartment is on the fifth floor of a completely refurbished traditional building from 1932, with preserved original details, an elevator, and parking. Located in an attractive Prague 2 neighborhood in the immediate vicinity of the Botanical Garden, near Vyšehrad Castle and Folimanka Park, within walking distance of the Vltava embankment. A area with very quick access to the city center, moments to tram stops, a few min. to the Karlovo náměstí metro station, and full amenities within easy reach incl. sports facilities such as the Podolí Swimming Pool and Žluté lázně.

The upper floor includes 4 bedrooms, 3 bathrooms, a fitted walk-in closet, a balcony, and an entrance hall. The lower level features a spacious living room, a fully fitted kitchen, a dining room, a bedroom (or study), a terrace, a laundry room, two toilets, and an entrance hall.

Ample built-in wardrobes and storage, two entrance doors to the apt., hardwood parquet floors, tiles, wooden staircase, security entry door, central heating, washer, dryer, dishwasher, central vacuum, alarm, cellar, bike storage in the building. Parking in the courtyard is available. Service charges and utilities are billed separately.

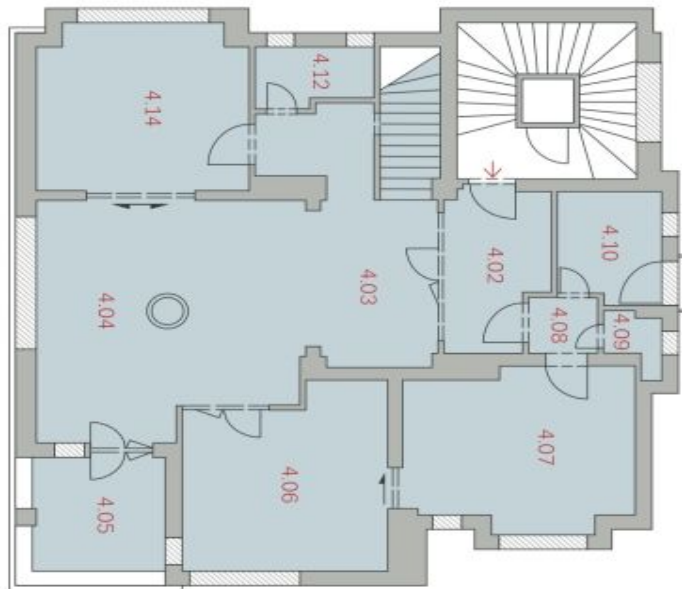


* Area of the unit according to the Civil Code. The area consists of the sum total area of the entire unit bounded by perimeter walls.

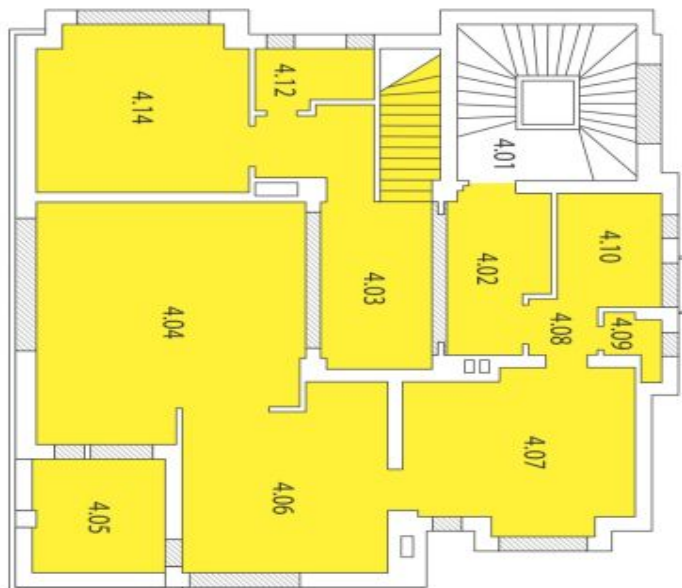
Apartment Six-bedroom (7+1)

250 m², Prague 2, Nové Město, Apolinářská

Rented



PUDORIS ANP



Apartment Six-bedroom (7+1)

250 m², Prague 2, Nové Město, Apolinářská

Rented

